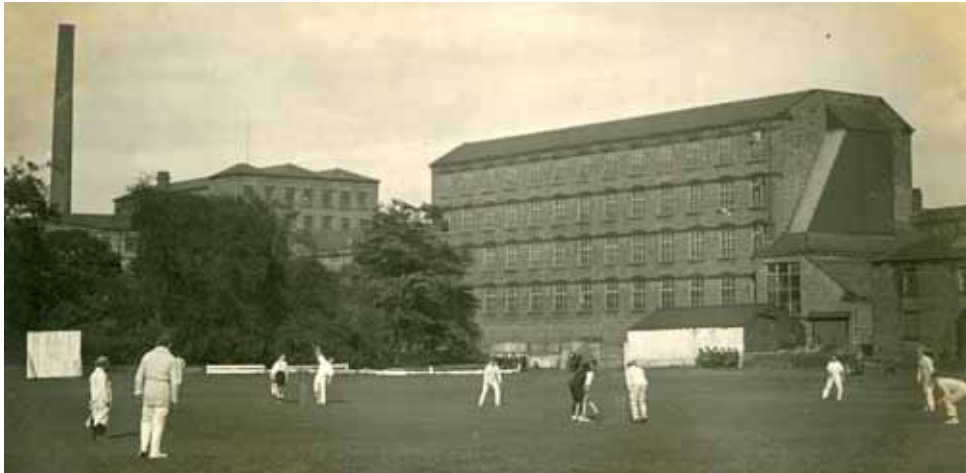


# WELCOME!

to the launch of 'Factories & Full Tosses! – Industry and Cricket in Calderdale c.1850-2000'

**Thursday 28 May 2009, Viaduct Café, Dean Clough Industrial Park**  
**Special Guests: Dr John Hargreaves, Geoff Wright and Malcolm and Freda Heywood**



**The Holme, Greetland – undated**



**Walton Street, Sowerby Bridge in the 1950s**

This exhibition is one of the many public outcomes of the Calderdale and Kirklees Cricket Heritage Project based at the University of Huddersfield. The project received a grant of £43,400 from the Heritage Lottery Fund and this was supplemented by an in-kind donation of £7,000 from the University of Huddersfield.

Other outcomes of the project have included an annual Pennine Cricket History Conference, an interactive website ([www.ckcricketheritage.org.uk](http://www.ckcricketheritage.org.uk)) which also acts as an electronic archive, traditional archives in Huddersfield and Halifax town libraries established by West Yorkshire Archive Service, activity packs for schools, cricket-themed heritage trails, regular newsletters and workshops, feature articles in the local and national press, and various publications about the history of local cricket.

#### **Acknowledgements**

With many thanks to Vic Allen and everyone at Dean Clough

See [www.ckcricketheritage.org.uk](http://www.ckcricketheritage.org.uk)