

BOOTH CC

The Early Years

DERBY NIGHTMARE

1893 - ORIGINS

Booth C.C. was first established in 1893. The first official match was played against neighbours Luddenden Foot St. Mary's. Unfortunately Booth were dismissed for just 8 runs!



MOO-VING TIMES

EARLY DAYS

In the early years of their existence, Booth were groundless and played in various locations. These included Tommy Lane and a 'field' behind the Woodman Inn which was also inhabited by cows.



LEVEL PLAYING FIELD

1895 – GROUND WORK



In 1895 a pitch was leveled at Carr House. However, it seems unlikely that it was ever used as the Club was offered the Woodman Inn venue, where it remained until 1942.

LOCAL COMPETITION

1895-1901 – SOWERBY DIVISION LEAGUE

Around the turn of the century we come across a 'Sowerby Division League', with Booth C.C. a significant member club.

Sowerby Division League Founder Members:

CLUB

Booth
Copley

GROUND

Booth (various fields)
Copley Lane



Copley Lane today

Cross Lanes

**Luddendenfoot St.
Mary's**

Luddendenfoot UMFC
(Utd Methodist Free Ch.)

Mytholmroyd

Salem (Hebden Bridge)

Sowerby Bridge

West End

Calder Holme

**Ellen Holme,
Luddendenfoot**

Top Shuttles

Calder Holme

Foster Holme

White Windows

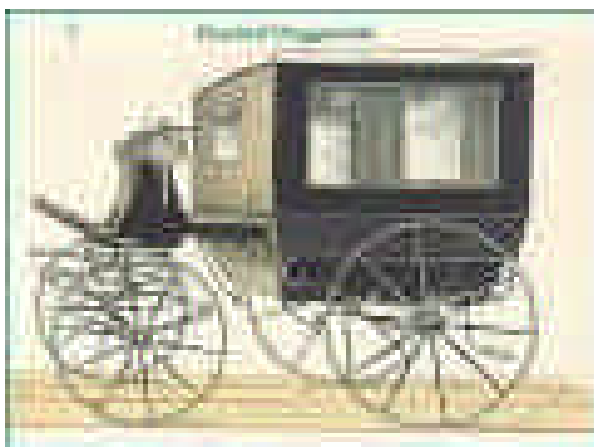
First Champions: Luddendenfoot St Mary's

Final Table 1895

	P	W	D	L	P
Luddendenfoot St. M.	14	10	1	3	21
Mytholmroyd	14	9	1	4	19
Booth	14	9	1	4	19
Cross Lanes	14	8	1	5	17
Salem	14	5	0	9	10
Luddendenfoot UMFC	14	3	3	8	9
Copley	14	4	1	9	9
Sowerby B West End	14	3	2	9	8

Luddendenfoot St. Mary's followed their Free Press Cup triumph of 1894 by winning the inaugural Sowerby Division League in 1895.

The Cup was presented at a special match, The Champions v The Rest of the League, which concluded the season.



After the ceremony, ***‘the victors were conveyed in a waggonette through the village, preceded by the Sowerby Subscription Band playing “See the conquering hero comes”, and wound up by sitting down to a first-class tea at the General Rawdon Hotel’.***

‘FAIRLY STEEP HILLSIDE’

1897 – LEAGUE REPORT

In 1897 the Halifax Parish Cup committee carried out a report on the grounds of competing clubs. Booth’s original ground, close to the Woodman Inn, was described as *‘irregular shape and on a fairly steep hillside.’* Its dimensions were *‘about 100 yards x 100 yards’* with a *‘laid crease 30 yards x 20 yards.’*



Booth.

This field is situate in the village of Booth near to the Woodman Inn. It is of irregular shape and on a fairly steep hill side. It measures about 100 yards x 100 & has a land crease 50 yds x 20 yds. The crease is capable of being made a good one but wants well rolling & more attention generally. The outfield has a pretty good surface but the contour is uneven. There is a small pavilion but no seating accommodation.

The report concluded that **'the crease is capable of being made a good one but needs well rolling. The outfield has a pretty good surface but the contour is uneven. There is a small pavilion but no seating.'**

DECADE OF PROGRESS

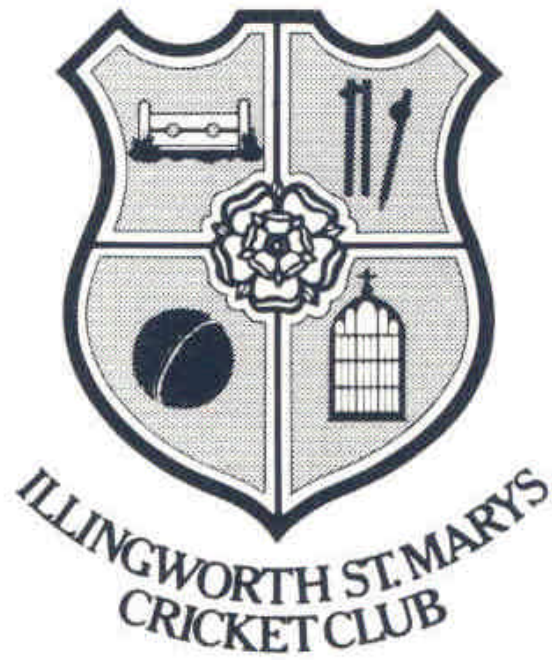
1900s – FIRST SUCCESS

In 1900 Booth were Sowerby Division Champions and in 1906 they made their first Parish Cup final appearance.

Parish Cup Final at Thrum Hall 21st, July, 1906
ILLINGWORTH v. BOOTH

Booth:		F. Sheard, b J. Sutcliffe	2
		H. Midgley, b J. Sutcliffe	0
		F. Wade, b F. Hinchliffe	15
		J. H. Ogden, b J. Sutcliffe	4
		A. Wade lbw, b J. Sutcliffe	25
		O. Smith, run out	2
		M. Addison, c Hinchliffe, b E. Helliwell	18
		C. Priestley, c Helliwell, b J. Sutcliffe	3
		T. Midgley, b J. Sutcliffe	1
		A. Pullan, b J. Sutcliffe	0
		W. R. Nicholson, not out	3
		Extras	1
			<hr/> 74
		Overs	Maidens
	J. Sutcliffe	17	4
	E. Helliwell	7.1	1
	J. Hinchliffe	9	1
		Runs	Wickets
		30	7
		18	1
		25	1
Illingworth:			
		A. Priestley, not out	23
		H. Helliwell lbw, b Addison	43
		E. Helliwell st, Midgley, b Ogden	3
		J. A. Jenkinson, not out	12
		Total for 2 wickets	<hr/> 81

Did not out: G. Horsfield, H. Mustwick, L. Whitham, J. Sutcliffe, W. Sykes.
C. Pickles, J. Hinchliffe. A. Smith, scorer.



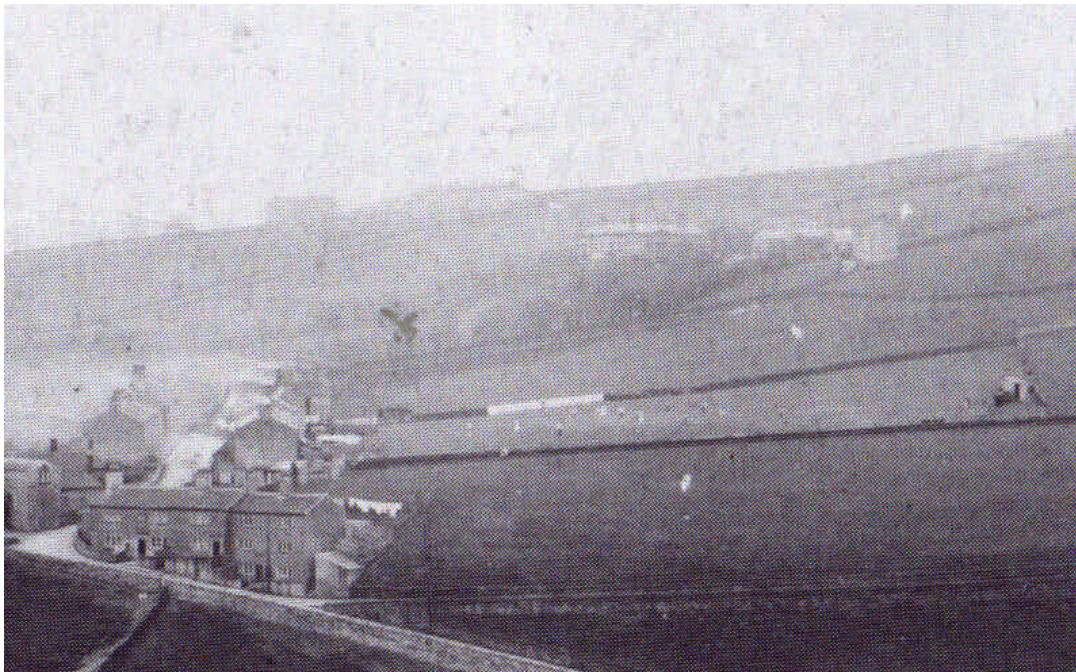
The venue for Booth's first Parish Cup final appearance

PEACE AND QUIET

1911 – THE VILLAGE



Can anyone spot the cricket club?



And when do you think this photograph was taken?
And from which vantage point?

WAR STOPS PLAY

1914/8: CLUB DISBANDS



During the First World War the Club was disbanded and the pioneering era of early cricket in Booth came to a close. Some of the early players moved to other clubs and others simply gave up the game.

BACK ON TRACK

1920s – TEAM PHOTOGRAPHS



After the Club was disbanded due to war, the 1920s saw Booth CC get back on track. In 1921 Booth joined the Halifax Amateur League.



1927 saw Booth win the Hebden Bridge League. This was a major achievement as they had only joined the League in 1924.

PASTURES NEW!

1938 – BOOTH JOIN HALIFAX LEAGUE

Booth left the Hebden Bridge League in 1938 and joined the Halifax League. The Club's ground now reached the required standard for the Halifax League.



These improved playing conditions were made possible when permission to mow the outfield was gained from the farmer who owned the field!

YOUNG AT HEART

MYSTERY PHOTOGRAPH



Do you recognise any of these young Booth players?
And can you name the decade this photo was taken
in?

GARDEN OF ENGLAND

1943 - REQUISITIONING

In 1943 the Club felt the impact of global conflict. This time the Woodman Inn ground was requisitioned and ploughed up for food production – and used for allotments – to support of the war effort.

