

WHAT WOMEN WANTED!

Introducing Mona Greenwood

Mona Greenwood became one of England's leading female cricketers in the 1930s. Her career with Brighouse began in 1931 (the women's XI had been founded in 1898) after she had been a key member of the Brighouse Secondary School Old Girls team, which won a knockout competition for women's teams that was organised by Brighouse C.C. and played at Clifton Road.



BRIGHOUSE LADIES' CRICKET TEAM, who were defeated last Friday by a Bradford XI. The return match will be played at Bradford to-night.

In the final, against Brighouse Central School, she played a starring role, scoring 55 and taking 7 wickets as her team

won by an innings and 22 runs. She played for Brighouse against Rastrick Ladies a few weeks later.

In 1935 the Brighouse women's side were crowned Yorkshire champions. Greenwood's career developed further over the following few years and, after representing Yorkshire and the North, she was selected for England Women for two 'Tests' against Australia in 1937.



Her international debut came in the second match of the series at Blackpool, where she scored 0 and 13. She was then selected for the third 'Test' match at the Oval where she made 23, her highest international score.

Celebrity status!

Following her success in the women's game, Greenwood became a celebrity in Yorkshire cricket circles.

In 1934 her views on seeing Don Bradman, the greatest batsman of all time, were sought when he appeared in the Headingley Test Match that year.

JOYS OF SEEING DON BRADMAN IN BATTING FORM A WOMAN'S VIEW OF THE TEST MATCH.

Many Runs Should Have Been
Prevented.

By MONA M. GREENWOOD
(Yorkshire Women's Cricket Captain).

If anybody thinks that I was disappointed with the play on Saturday in the Test match at Leeds they are mistaken.

Perhaps if I had watched the match through the eyes of those hundreds—possibly thousands—of women who made most colourful the record crowd which ringed the enclosure, I would have been tired of the play long before the finish.

Top Club support

1931 – KNOCKOUT CRICKET

Mona Greenwood's successful career owed a great deal to Brighouse Cricket Club's support for the women's game in the 1930s.

In 1931 the Club ran a successful women's knockout competition which attracted seven entrants and considerable interest in the local press. It was won by Brighouse Secondary School Old Girls who beat Brighouse Central School Old Girls in the final.

Nahums Ltd., New Road Rastrick, Carr Green, Brighouse Secondary School Old Girls and Huddersfield Rovers were the other teams that took part.



'Watch the fair sex use the willow'

1930s – PRESS ADVERTS

After the Club's successful knockout competition had attracted considerable local interest, Brighouse Ladies cricket matches became high-profile occasions.

Coming Events. Cricket on the Clifton Rd. Ground

THIS (FRIDAY) EVENING AT 8.45.
BRIGHOUSE LADIES v. HUDDERSFIELD LADIES.
Admission: Adults, 2d., Boys and Girls under 14, 1d.

SATURDAY AFTERNOON at 2.30.
BRIGHOUSE v. BANKFOOT.

The match of the season. Both teams are running neck and neck for lead in Bradford League. Brighouse 23 points, Bankfoot 22 points.
Admission 6d., Ladies 3d., Boys and Girls under 14, 1d.
Refreshments provided on the ground at reasonable charges.

GRAND CRICKET MATCH
BRIGHOUSE LADIES v. KEIGHLEY LADIES
Saturday Afternoon, September 12th
on the Clifton Road Ground.
WICKETS PITCHED AT 3 O'CLOCK.

GRAND CRICKET MATCHES
ON THE CLIFTON ROAD GROUND.

THIS (FRIDAY) EVENING, JULY 10. Wickets pitched at 7 o'clock.
SEMI-FINAL ROUND. LADIES COMPETITION.
Secondary School Old Girls v. Carr Green Girls.
Admission: ADULTS 2d.; BOYS & GIRLS (under 14) 1d.

SATURDAY, JULY 11. PRIESTLEY SHIELD SECOND ROUND.
BRIGHOUSE 2nd v. IDLE 2nd.
Wickets pitched 2 o'clock.
Admission: ADULTS 3d.; BOYS & GIRLS (under 14) 2d.

This was increased by the team's success...

Cricket.
Brighouse Ladies' C.C.
Huddersfield Twice Beaten

....and by the players' generosity...

**GIRL CRICKETERS HELP
CHARITIES.**
**Success of Bradford's
Evening League.**

...but along with the new-found celebrity there also came increased scrutiny.

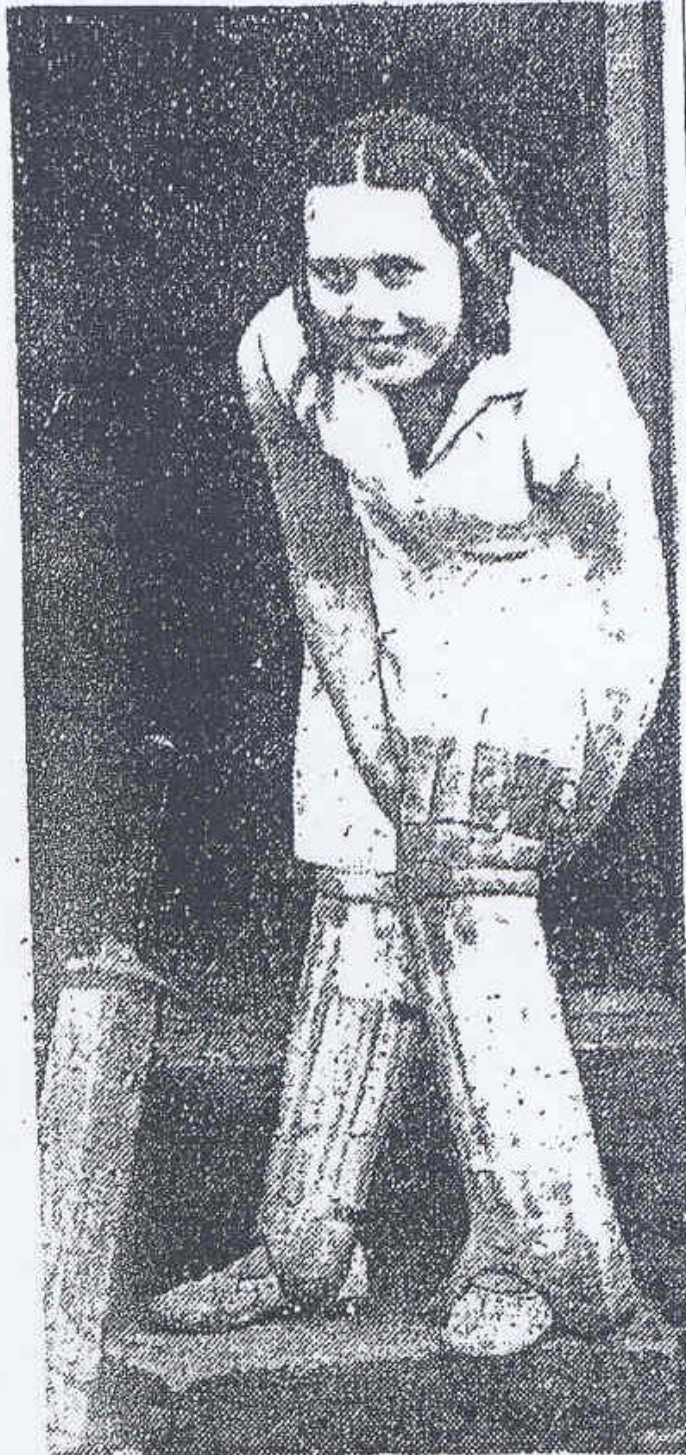
**Brighouse Ladies'
Cricket Club.**
**Why the Bradford Match
Was Lost.**
A Friendly Criticism.

'Graceful poise'

1930s – PRESS PHOTOS



A GOOD RETURN.—A fielder in the ladies' cricket match at Rastrick, caught in graceful pose.



WAS IT A CENTURY—OR A DUCK?

—This lady cricketer, who took part in the Rastrick v. Brighouse match on Monday, does not seem at all perturbed at the prospect of facing the crowd and the bowling.