

CRICKET

Focus on - Elland

The 12th in a Saturday series on Calderdale cricket clubs by Dr Peter Davies of the Cricket Heritage Project at Huddersfield University

Aussies and clowns in Elland's rich tapestry

Cricket teams were appearing in Elland from 1859, and that included the side that went on to become Elland CC.

A cricket XI was formed of teachers and scholars linked to Providence Independent Sunday School in 1860, and it was out of this side that Elland CC came into being.

In the late 1870s and 1880s the rising status of Elland CC was reflected in a series of major matches which were played at Hullen Edge.

The most famous of these 'big matches' was the first one, against the mighty 1878 Australian tourists. The club also played against a team of touring Clowns.

In 1886 the Indian Parsees joined the list of prominent touring sides to visit Elland.

Apparently, the exotic nature of the Parsee players and their surnames proved memorable to the locals.

The pronunciation of names such as D.D. Khambata, S.M. Bhedwar and J.D.P. Pochkhanavalla was particularly challenging for the nineteenth-century Yorkshire tongue, much to the amusement of the spectators.

In 1916 Elland played Staincliffe in the Yorkshire Cricket Council Play-off Final. Elland scored 260 for 9, Staincliffe a mere 62.

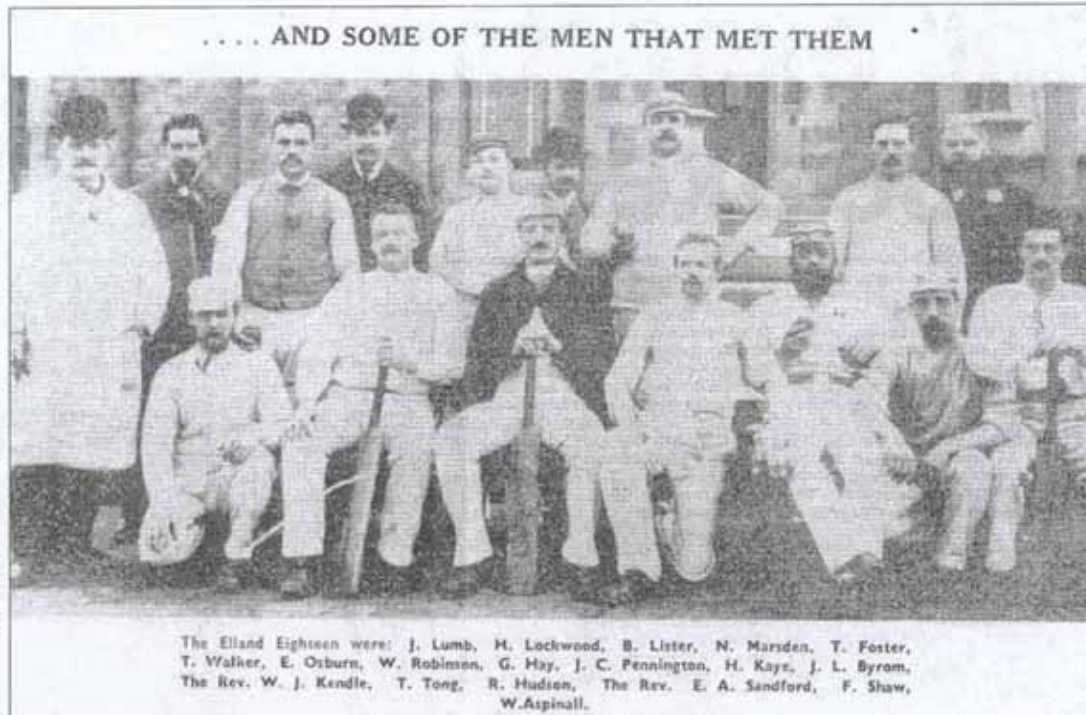
This was one of only two occasions when the club reached the final of this prestigious competition (which covered the whole of the county and included many of its leading clubs).

In 1935 Elland won their first Sykes Cup, beating big guns Huddersfield by 38 runs.

The club used the money it was left by Ernest King, after his death in 1959, to buy its first motorised roller - a major landmark so far as ground maintenance was concerned.

As the twentieth century came to a close, Elland Cricket Club's proud tradition of staging premier cricket matches was still going strong.

In 1978, exactly 100 years after the visit of the most prestigious touring team of all, the Australians, Yorkshire County Cricket



Heady days: The Elland players that hosted the mighty Aussies in 1878

Club began to play regular 2nd XI Championship matches at Hullen Edge.

In all, 21 matches were played before the last, in 1999.

Elland are now one of the premier clubs in the area, with an impressive, attractive ground and plenty of silverware in the trophy cabinet.

FACT FILE

Founded: 1860

Ground: Hullen Edge

Nearest Landmark: Elland Golf Club

Nearest Other Clubs: Greetland,

Blackley

League: Huddersfield (1926)

Former Leagues: Soen & Calder

Valley League, Yorkshire Council

Greatest Moment: Hosting the

Australian tourists in 1878

Local Hero: 'Mr Elland' Derek

Gledhill - lifelong club stalwart

Bizarre Fact: In 1977 Red Rum opened the function room.