

LIGHTCLIFFE CC

The Early Years

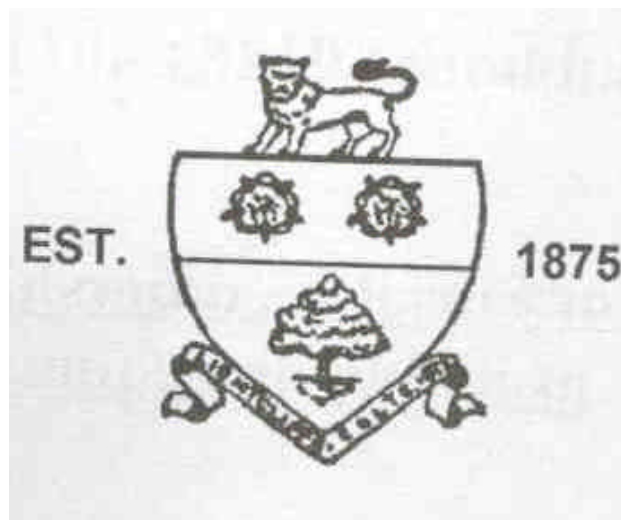
LIGHTING UP LIGHTCLIFFE

1875 – FORMATION OF CLUB

1875 was the year in which Lightcliffe Cricket Club was formed.



At this time, the Club was located at the other end of Lightcliffe village on West Field. Today the ground is situated on Wakefield Road, although a local farmer owns the ground.



COMBINING FORCES

1880s/1890s - CUPS AND LEAGUES

Lightcliffe played an instrumental role in the formation of one of the district's first cricket leagues.

A cup committee was formed in Halifax in 1887 and Lightcliffe Cricket Club was one of the 12 teams involved in this.



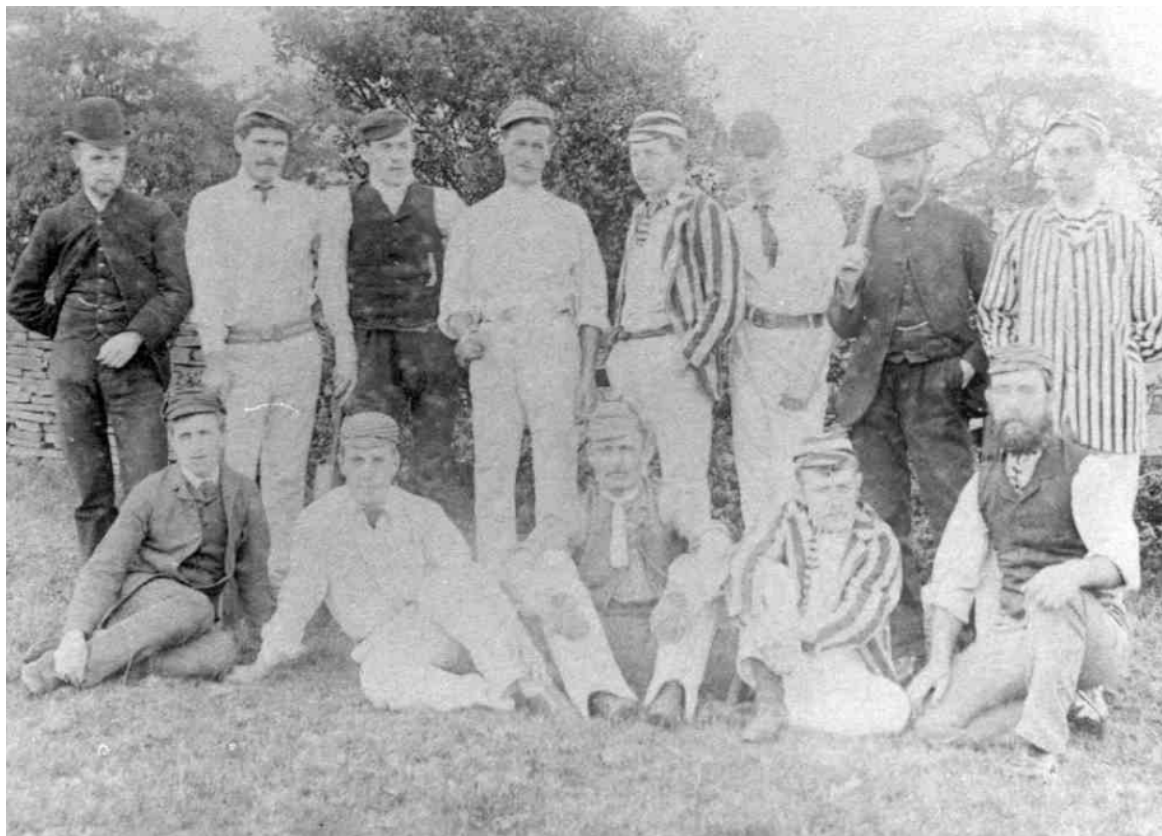
The Club was a key player in the establishment of the Halifax & District League in the 1890s.

Lightcliffe continued to play in the Halifax League for the rest of the century and well into the twentieth century.

LUCKY 13!

EARLY DAYS – TEAM PHOTOGRAPH

This team photo is from the early days of Lightcliffe Cricket Club and is believed to date back to about 1890.



Note the array of early cricketing attire: coloured blazers, waistcoats, ties, and a variety of shoes, caps and trousers.

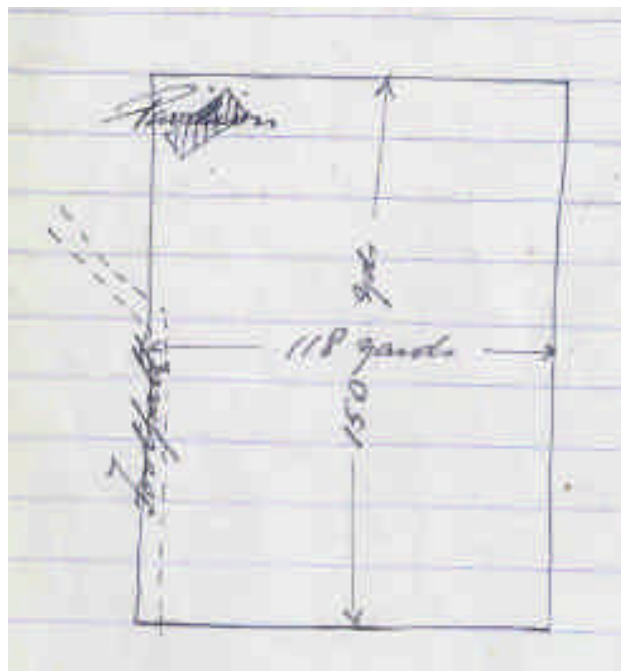
‘Whites’ – and uniform, coordinated whites – were still decades away for local league cricket clubs.

AN INSPECTOR CALLS

1891 - LEAGUE VISIT

An inspection of all grounds in the Halifax Parish League was made in 1891 - including Lightcliffe.

It was recorded that the ground was 150 x 118 yards in area and was in good condition.





The ground today

23 ✓

Lightcliffe.

This field is situated near the old Lightcliffe church and measures 150 x 118 yards, with a laid crease 60 x 40 yards, both in good condition. There is a good pavilion and seating for about 70.

UP FOR THE CUP!

1905 – PARISH SUCCESS

While still playing in the Halifax Parish League, Lightcliffe were successful in winning the Championship in 1905.

The shield in the picture is the Rawson-Shaw Shield.



The sense of importance and pride can be clearly seen in the picture as Captain H. Greenwood and his fellow team members proudly pose for the camera.



The shield in question has survived and is currently on display in the Sowerby St. Peter's cricket pavilion.

ALL'S FAIR IN CRICKET & WAR

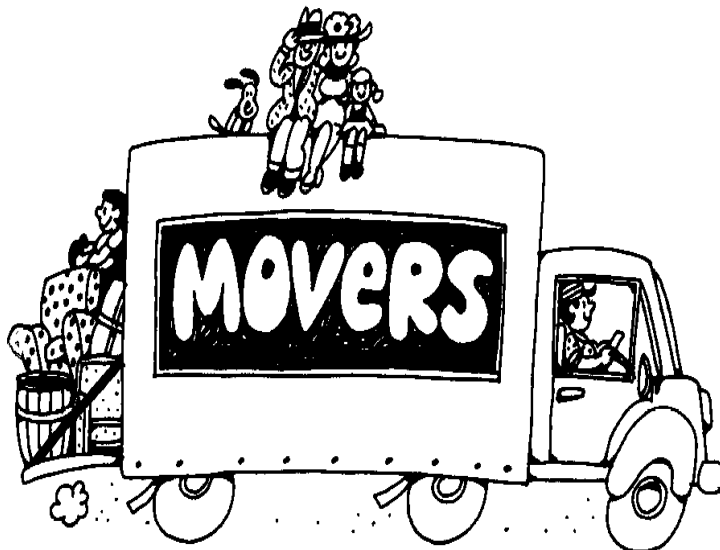
1914 – LIGHTCLIFFE MOVE

Due to the Great War (1914 -1918), Lightcliffe Cricket Club joined the Spen Valley League on a temporary basis.



Due to the War large numbers of young men enlisted, and as a result a number of clubs were unable to carry on for the duration of the conflict.

But despite the war the cricket continued in full force!



BRICKS & MORTAR

1922 – NEW DEVELOPMENT



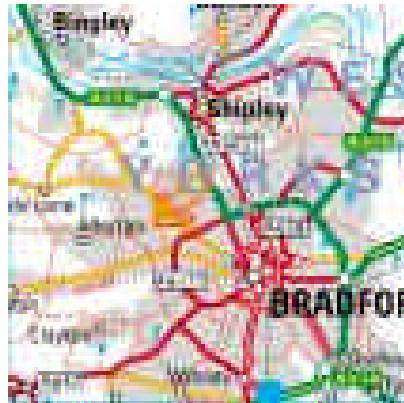
Lightcliffe were overjoyed when Sir W.H. Ackroyd provided the Club with a new pavilion in 1922.



However, on receiving the pavilion one of the conditions was ***‘that they did not have a bar or sell alcohol.’***

INTO THE BIG LEAGUE!

1924 – BRADFORD LEAGUE



In 1924 the Club left the Halifax League. It joined the Bradford League, one of Yorkshire's most prestigious competitions.



PRIDE OF THE CLUB!

1927 – TEAM PHOTOGRAPH

This team photo was taken on the occasion of the first fixture of 1927.

After their successes of 1926, the Club was raring to go!



AN INNINGS TO BEAT THEM ALL

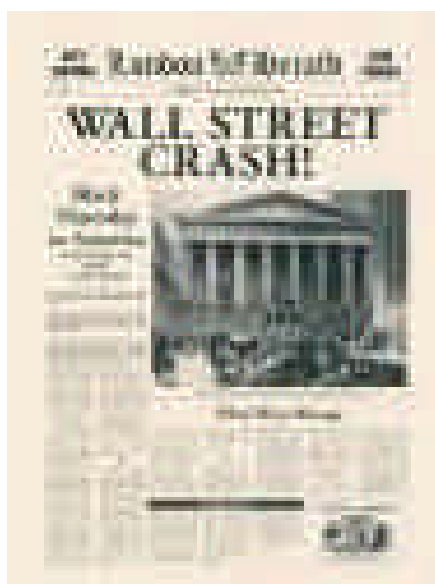
1929 – PERSONAL TRIUMPH

The 1920s finished with a bang for Lightcliffe!



1929	T. W. Patefield, Lightcliffe v Eccleshill
1930	J. Hill, Snr., Brighouse v East Bierley
1931	J. Drake, Windhill v Lidget Green
1932	J. M. Crossley, Brighouse v Baildon Green
1933	W. Sutcliffe, Farsley v Saltaire
1934	J. Swift, Idle v Great Horton
1935	M. T. Wade, Bingley v Baildon Green
1936	W. Sutcliffe, Farsley v Windhill
1937	F. Wharton, Spen Victoria v East Bierley
1938	J. R. Burnet, Baildon Green v Saltaire
1939	T. E. Lambert, Saltaire v Farsley
1940	E. Robinson, Great Horton v Lightcliffe
1941	M. Coope, Spen Victoria v Undercliffe
1942	T. Walker, Baildon Green v Bankfoot

In the year of the Wall Street Crash, T.W. Patefield won an award for recording the highest individual score of the 1929 season against Eccleshill.

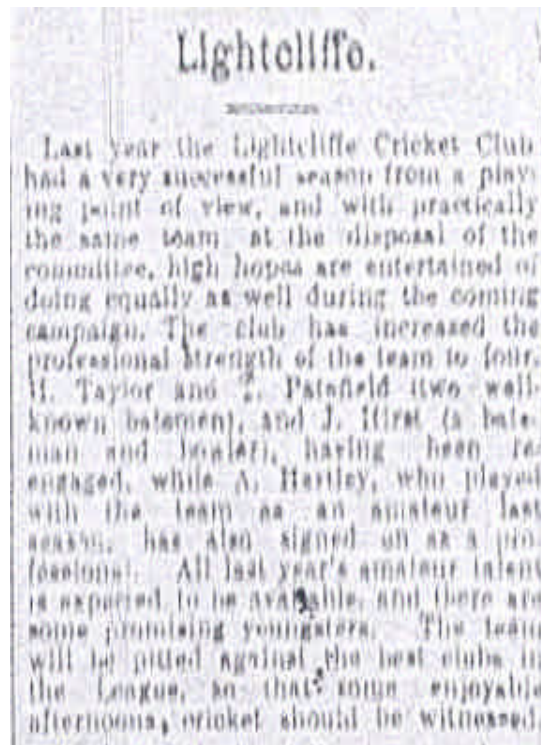


GREAT EXPECTATIONS!

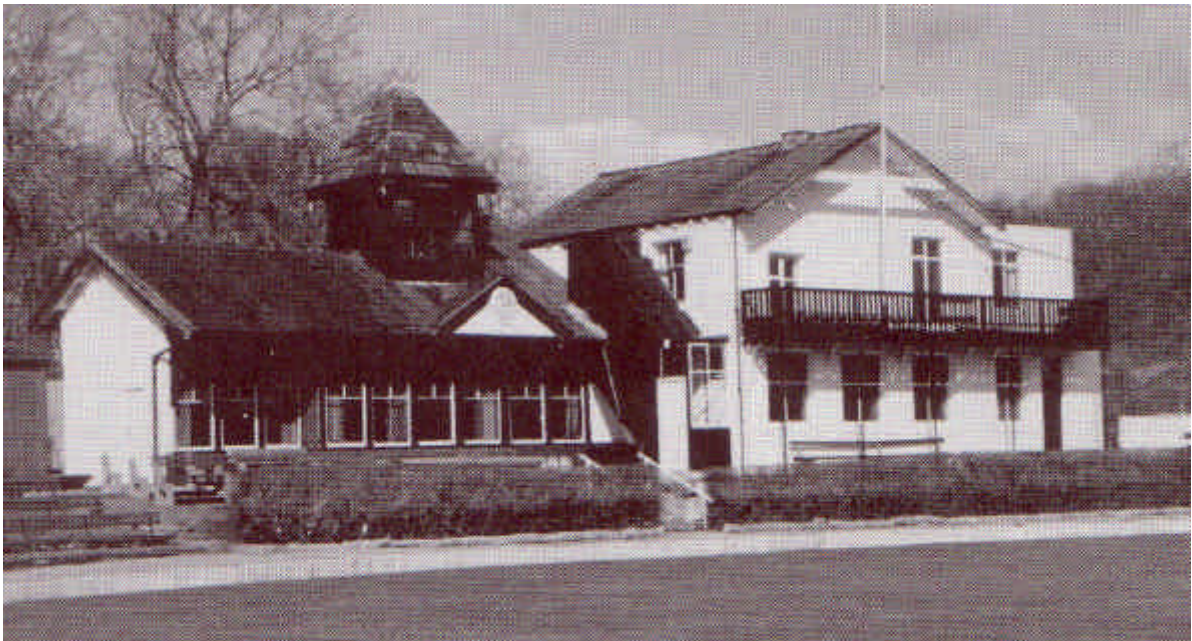
1930 – SEASON AHEAD

Lightcliffe began the 1930s in a positive frame of mind.

A preview of the forthcoming season in the local press stated: ***‘Last year the Lightcliffe Cricket Club had a very successful season from a playing point of view, and with practically the same team at the disposal of the committee, high hopes are entertained of doing equally well.’***



Apr.	24	Bradford "A"	home
May	3	Kelshley	away
"	10	Bowling Old-lane	home
"	17	Pudsey St. Lawrence	away
"	24	Undercliffe	home
"	31	Windhill	away
June	7	Bradford	home
"	9	Yarsley	away
"	10	Brighouse	home
"	14	Bradford "A"	away
"	17 and 18	Queensbury	away
"	21	Kelshley	home
"	24 and 25	Queensbury	home
"	26	First Round Cup.	
July	5	Bowling Old-lane	away
"	12	Second Round Cup.	
"	19	Pudsey St. Lawrence	home
"	26	Undercliffe	away
Aug.	2	Windhill	home
"	4	Semi final Cup.	
"	6	Yarsley	home
"	23	Final Cup.	
"	30	Brighouse	away
		Second team vice-versa.	



Clifton Road, Brighouse – where Lightcliffe finished their 1930 campaign

KEIGHLEY WOE!

1930s – MEN & MATCHES



1936

LIGHTCLIFFE'S LAPSE.
Despite a fine innings by A. Hartley, who hit up 54, Lightcliffe were beaten by their visitors from Keighley. Although the wicket might have been expected to assist the bowlers, the Lightcliffe attack did not seem to utilise whatever advantage the condition of the pitch might have offered. Young, in particular, seemed unable to find pitch, and in his first spell with the ball proved very costly. Hirst kept a good length, and at first the visiting batsmen found it difficult to get him away, but later, when he began to fire, Sellers showed a tendency to punish him severely. Hartley's bowling was rather patchy; he sent down some good balls but others simply asked to be hit.

He it was, however, who got rid of Sellers, the batsmen hitting his wicket in playing back to a ball, while Patel, field, who took on rather an unusual role as bowler, managed to get Butterfield, the Keighley top scorer, caught, and also disposed of R. Jowett. The condition of the ground naturally was against smart work in the field, but, even allowing for that, there was little excuse for some of the missed chances. Lightcliffe's batsmen, when it came their turn, were unable to do anything against the bowling of Lamb. The wicket has obviously been growing more difficult, and Lamb made use of the help which it afforded, to the fullest extent. Apart from Hartley, who played a really creditable innings in compiling 50, only J. Hirst was able to reach double figures, and his 19, useful though it was, did not prove sufficient to stave off defeat. Lightcliffe lost partly because they found their opponents in top form.

A poor performance against Keighley!

TROPHY JOY!

1937 - SECOND PRIESTLEY CUP SUCCESS

The potential at the Club, noted seven years earlier, finally bore fruit in 1937 when the Club won the Priestley Cup for the second time.

A framed document titled "LIGHTCLIFFE CRICKET CLUB. PRIESTLEY CUP WINNERS SEASON 1937. RECORD OF MATCHES PLAYED." containing a detailed match record table. The table is divided into two main columns, each with multiple rows of data, likely representing individual matches and player statistics. The text is in a serif font, and the document is mounted on a dark wooden frame.

After victories over Keighley, Bradford and Lidget Green, Great Horton were defeated in the final. Albert Hartley was the star in this match, scoring 131 as Lightcliffe secured a 75-run win.

WE ARE THE CHAMPIONS (AT LAST!)

1939 – DIVISION TWO TITLE

The Club secured its first Division 2 title in 1939, as world war loomed again.



CRICKET CHAMPIONS. — Lightcliffe have won the championship of "B" Division of the Bradford League, and last Saturday the Waddilove Cup was presented to the captain, Charlie Young, by Mr. W. H. Foster, President of the League.

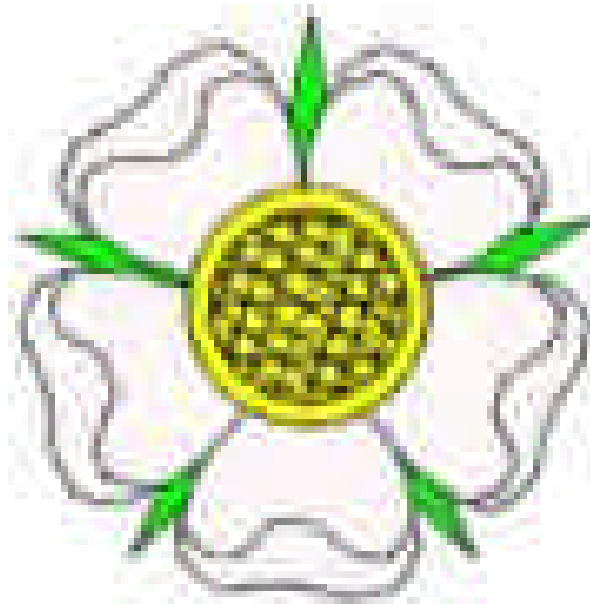
COUNTY-WIDE COMPETITION

1945 – YORKSHIRE COUNCIL



1945

After the War was over, Lightcliffe decided to join the Yorkshire Council.



This photo was probably taken soon after the Club joined the Council.



Do you know who the gent on the right is, with the hat?