

LIGHTCLIFFE CC

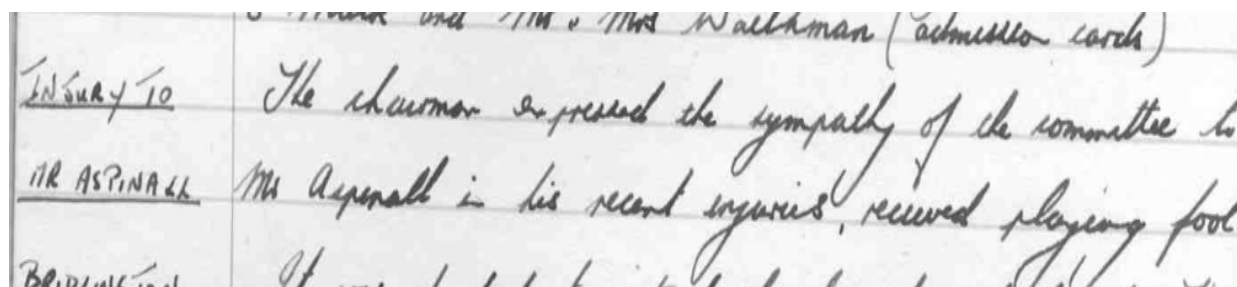
The Later Years

THE NAME OF THE GAME

1947 – INJURY NIGHTMARE

The Club received an early setback at the start of the 1947 season. In the off- season, leading player and future captain Herbert Aspinall had been injured playing football!

This temporary setback was viewed with great seriousness, and received a special mention in the Club minutes.



WOMEN ON TOP!

1947/8 – MEMBERSHIP CHANGES

In 1947 women at Lightcliffe would have been very pleased to hear the news that in the following season, 1948, they would be accepted as full playing members at the Club.



However, they would not have been pleased to hear that they would have to pay the same joining fee as an ordinary member. Equality came at a price!

However, despite the bad weather, Lightcliffe went on to victory, beating East Bierley by 5 wickets.



The Lord Mayor of Bradford presents the trophy

CHIMES OF SUCCESS

1950 – BELL TROPHY



If winning the Bell Trophy was not good enough for Lightcliffe, then meeting the man himself was even better! Doctor Bell presented the Bell Trophy to Herbert Aspinall after the Club's success.

HARTLEY BOWLED OVER!

1952 – 10-WICKET HAUL



In 1952 Albert Hartley recorded a feat that most cricketers can only dream of. He took all 10 wickets in an innings - and was awarded a mounted cricket ball to celebrate the event.

A Hartley. After some discussion it was suggested that the Committee + players present ^{a mounted} ~~some~~ ^{cricket ball} as a memento of his performance of taking all 10 wickets for 36 runs.
Mr Lees promised to find out the cost of suitably mounting + inscribing the ball.

SILVERWARE JOY!

1955 - PRIESTLEY CUP HEROES



H. CROFTES (captain) A. ROBINSON M. L. WATSON (coach) L. BELL A. HORNER R. A. WALKER D. B. MADON H. WEST J. A. NAYLOR

J. M. BARRIETT (captain) C. S. PICKARD A. B. MOORE K. R. HIRSH H. ADRIAN (coach) A. HARTLEY I. WATTSLEY G. BIRNS W. A. GOODER

A. PICKARD P. W. ROBINSON (captain) G. M. C. THOMPSON (coach) S. JEWELL A. HEARD J. COOPER (captain) H. SHARPE L. G. TAYLOR W. BIRNALL J. M. LEE A. W. KAY (coach)
 M. COLLINS R. BOOTH A. B. HAIGH J. C. HUNTER D. GARRIDE P. S. TREWITT

HAVE I GOT NEWS FOR YOU!

1966 – ASPINALL HONOURS CLUB

Bradford League cricket has always had a high profile throughout Yorkshire and beyond. In September 1966 *The Bradford Bystander* ran an article which focused on the history of Lightcliffe Cricket Club. Team member Herbert Aspinall - captain of the team from 1949 to 1966 – penned the piece.



The article traced the Club's journey through the leagues before they became members of the Bradford League. It also featured the many prominent people who have been involved in the club. The article reflects the longstanding interest in the history and heritage of prominent local cricket clubs such as Lightcliffe.

SHIELD THY GLORY

1968 – LIGHTCLIFFE WIN

The swinging sixties proved successful for Lightcliffe. As well as winning the Priestley Cup in 1964 a number of players won Bradford League individual trophies.



The 1968 Priestley Shield-winning team

B.J. Whiteman won the Fastest Fifty Trophy in 1967 and the League Bowling trophy in 1966, while D. Garside scooped the Wicket-keeping Trophy in 1965. Even more success was enjoyed by the 2nd XI, who became Division 1 champions in 1967, 1968 and 1970 and who netted the Priestley Shield in 1968.

FEARS FOR THE FUTURE

1974 – GROUND NEGOTIATIONS

Uncertain times loomed for Lightcliffe in 1974. As one newspaper put it: ***‘The club celebrate their centenary next year and are approaching a vital stage in their history. The lease on the ground ends in February 1977, which means that 1976 would be their last season unless they can negotiate a new lease or arrange to purchase the ground.’*** However, all fears were laid to rest when Lightcliffe successfully reached agreement over the Wakefield Road venue.



HAPPY BIRTHDAY!

1975 – 100 YEARS OLD

1975 was a year to remember for Lightcliffe as the Club celebrated its centenary.



The 1975 team

PERFECT 10!

1977 – AMAZING FEAT

Lightcliffe star Vijay Modgill took all 10 wickets against Eccleshill in 1977! Herbert Aspinall had achieved the same feat in 1952.

Evening Courier, Monday, July 4, 1977 11

No stopping Lightcliffe (with 10-45 from Vijay)

VIJAY Modgill, Lightcliffe's slow bowler, joined cricket's "ten-up" club when he took all 10 Eccleshill wickets in a Bradford League game on Saturday.

Modgill, who joined the club at the beginning of this season, returned 15.5-45-10 as Lightcliffe stayed hot on the trail of a promotion and Priestley Cup double.

Eccleshill were dismissed for 114, still 48 short of Lightcliffe's 102. But they battled hard for 44 overs, 18 of them bowled by Lewis Pickles for a return of one for 35.

And yesterday, Lightcliffe reached the semi-finals of the Priestley Cup with one over another Division Two side Salford.

opener Pickles set Lightcliffe on the road to success with 50 in 47 but nine declared but again, it was the bowling of Pickles and Modgill which won the day.

The two spinners between them took seven wickets and scattered Salford's batting, which slumped from 111 for three in 40 to 8 before a last gasp 18 from Phil Barron took them to 121.

Lightcliffe lie at home to Division One side Bingley in the semi-final.

It Modgill hugged the Lightcliffe spotlight, then an old Michael Elliot for Northowram in the Bradford Central League. He thumped 100 out of Northowram's 208 for six and struck eight fours and six sixes. And while he was scoring those runs, only 35 were added from the other end. But Geoff Warr, bowler, survived the onslaught by keeping with 137 for five to ensure a draw.

In the Lancashire League, Todmorden jumped to their fourth successive defeat with an even performance at Lowerhouse. The visitors never looked like challenging the home team's 129 for six and were all out for a paltry 71.

Don Hudson, hanging freston's six-hit king of the Central Yorkshire League, won the match against Sowerby Bridge single-handed.

At 45 for three, with almost half the overs gone, there were slight hopes that Sowerby Bridge's 119 for seven might be good enough. Hudson had other ideas.

Draham Priestley, Sowerby Bridge's opening bowler, signed

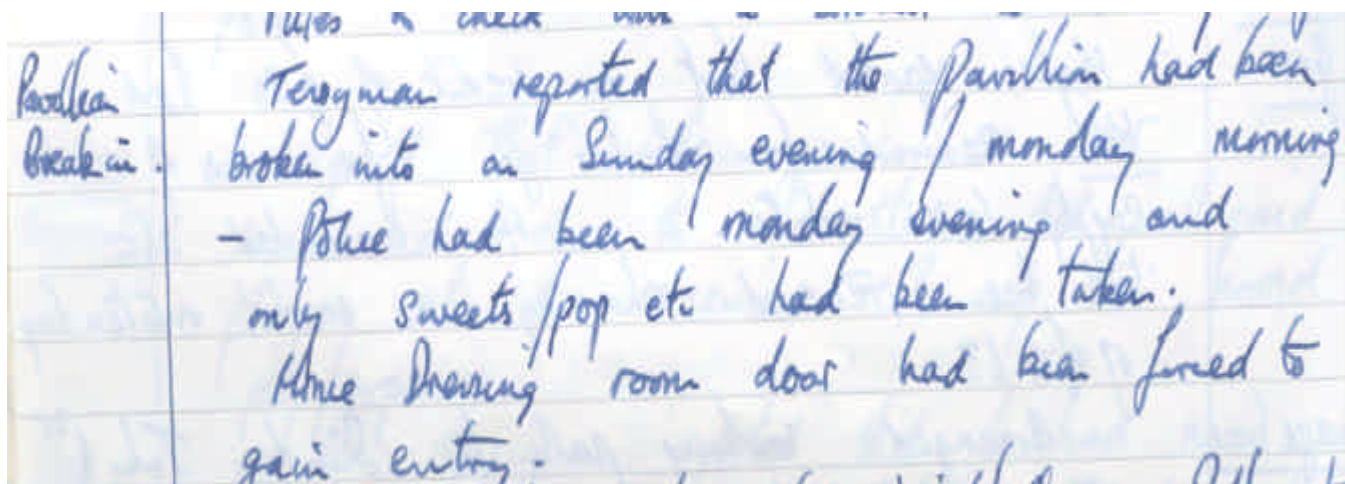


COPS AND ROBBERS

1990 – CLUB BURGLARY

Lightcliffe members were in for a shock when they discovered that their pavilion had been broken into in 1990 (on a Sunday evening or early Monday morning). The home dressing room door had been forced open to gain entry.

However, players and friends of the Club were relieved to discover that, apart from this, the only thing that was stolen from the pavilion were sweets and pop drinks!



Handwritten note on lined paper:

Pavilion
break in.

Terryman reported that the pavilion had been broken into on Sunday evening / Monday morning - Police had been Monday evening and only sweets / pop etc had been taken. Home dressing room door had been forced to gain entry.

MY FAIR LADIES

1990 – FASHION SHOW

A fashion show was put on by the women of the Club in 1990 - and was a huge success. Not only was a lot of fun had by all, but the event also managed to raise an impressive £350!



CHAMPIONS!

1995 – TEAM PHOTO

This team photo from 1995 shows a proud second eleven team who have just won the division two championships.



FIRST CLASS FIRST TEAMERS!

2001 – STAR MEN

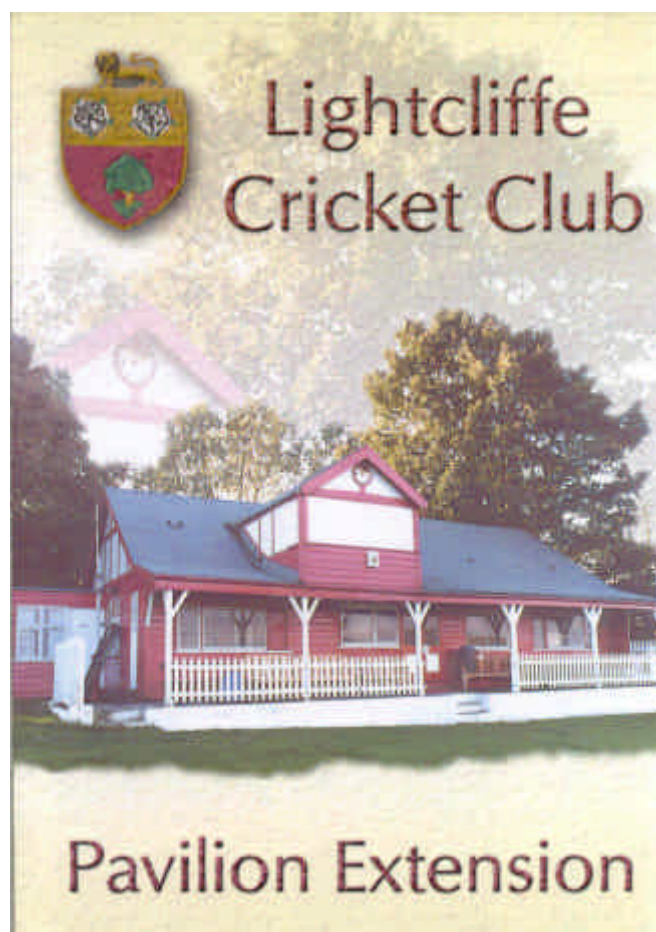
Lightcliffe players pose after yet another success. This time it is the 1st XI, Division 2 Champions in 2001.



TO BE OR NOT TO BE...

2002 – PAVILION EXTENSION

The future of the Club hung in the balance in 2002 when a 'Pavilion Extension' plan was discussed.



**LIGHTCLIFFE AND DISTRICT
CRICKET AND LAWN TENNIS CLUB**

ESTABLISHED 1875
BRADFORD LEAGUE

President:

MR. E. A. C. Demham,
Cherry Trees, Knowle Top Road, Lightcliffe, Halifax, HX3 8SW.

Chairman:

John
Mr. J. M. Brooke,
25, Leyburn Avenue,
Lightcliffe,
Halifax, HX3 8NX.
Tel: 01422 202930

Hon. Treasurer:

Mr. D. W. Carran,
34 Sefton Avenue,
Hove Edge,
Brighouse, HD6 2NA.
Tel: 01484 715654

Hon. Secretary:

Mr. J. R. Heyhoe,
86 Kingsdale Gardens,
Drighlington,
Bradford, HD11 1EZ.
Tel: 0113 2852962

August 2002

Re: Pavilion Extension

Dear

I am writing to let you have details of our plans to extend the pavilion at our Wakefield Road ground and to ask, please, for your help and support.

Many of you receiving this letter will already know something of our intentions from the annual meeting agenda or from reports in the press. It may be helpful, though, to give again some of the background to our decision to extend.

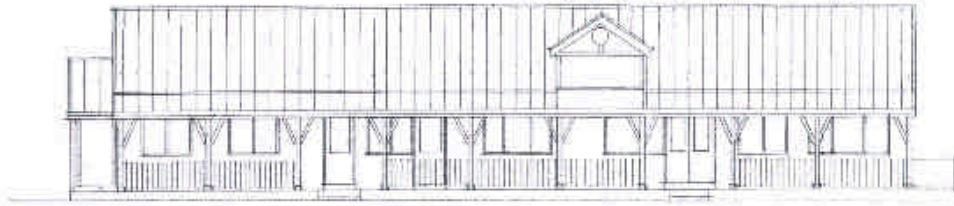
During the course of the last four years the committee has been reviewing our position at Wakefield Road, especially as we have been unable to obtain the freehold of the ground. Two sites in the area have been considered along with options related to our present site. The cost of moving proved to be financially out of our reach even with the possibility of grants. The committee, therefore, accepted the working party's proposal to remain where we have been for over 100 years and to improve the facilities there. Initially the decision involves only an extension to the pavilion, as we have been unable to agree with our landlord on vehicular access, other than for ground staff and emergency traffic. Even if we had not decided to extend our facilities, we would still have had to invest a considerable amount of money in a major renovation programme of the existing pavilion.

The diagram below shows the proposed extension to the pavilion that the Club was considering.

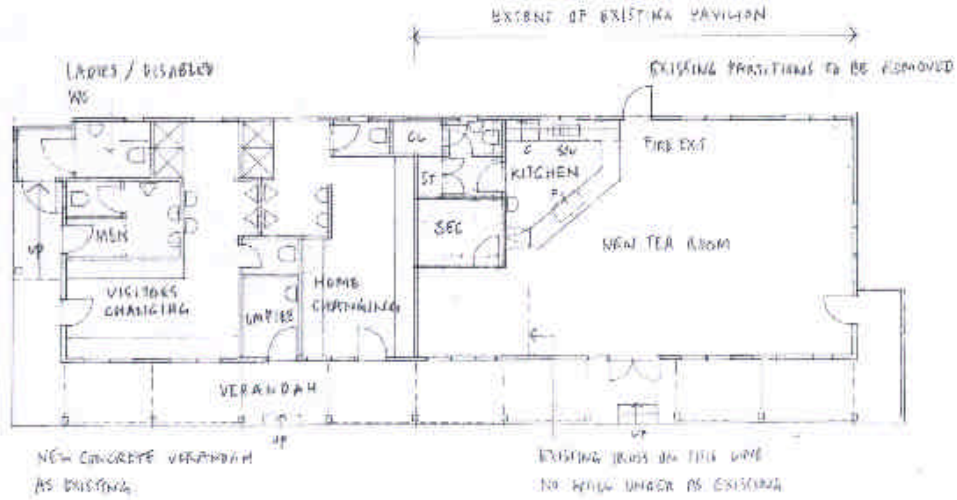
LIGHTCLIFFE CRICKET CLUB - OPTION D AND B

SCALE 1/100 (NOT BASED ON ACCURATE SURVEY) DRAWN 25.01.02

EXISTING FELT ROOF OVERLAP SIDE CHANGING STAIRS
SEMI INSULATED METAL DECKING TO MATCH EXTENSION



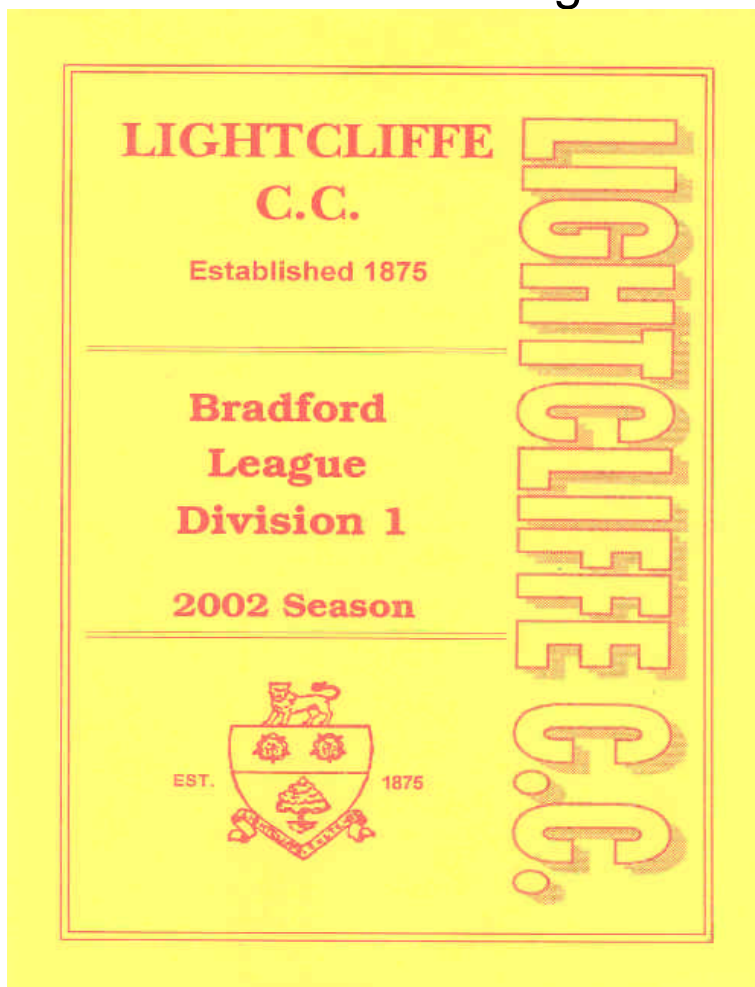
EAST ELEVATION



LOOKING GOOD!

2002 – MATCHDAY PUBLICATION

Lightcliffe produce a professional-looking programme for all 1st XI fixtures in the Bradford League.



BRIGHT AND BEAUTIFUL

CLUB TODAY

Across the Bradford League there are urban landscapes aplenty. Lightcliffe bucks the trend. It is one of the rural outposts of the League.

