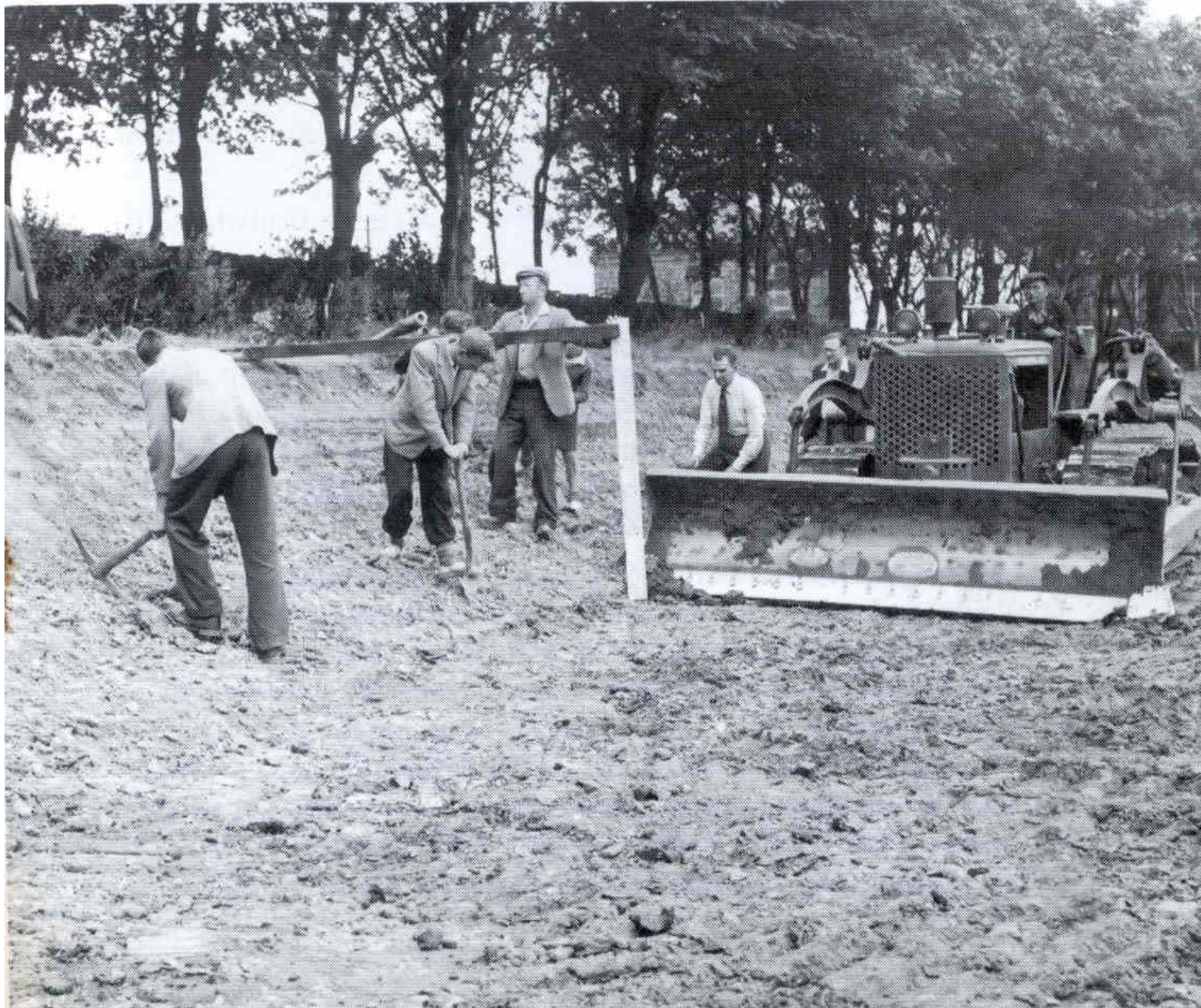


Preparing the site for the 'tents' in 1956



Boston Hill Ground

105			
Dec 6	To Balance on hand	(see statement)	32.10
22	Amber 2nd		14.20
1050			
Aug 5	Harvard Property	rights association - Grant	300
1057	Nov 3	Amber 2nd	9
1058	June 8	Miss Lillian Payne	30
1059	Sept 30	Contribution to	21
		Amber 2nd	8.00
1060	Oct 31	Contribution to	35
		Amber 2nd	
1061	Nov 10	Contribution to	68.11
		Amber 2nd	

50133

Development Account

1956			
Nov 1	By Deficit brought forward		3711.8
27	Putterworth Bros.	June 4	57.9
27	Bank charges	Commission	12.46
20	Putterworth Bros	July - marble + cement	5
1957			
Jan 1	W. B. Crossley + Co.	Timber + wall stones	1210.6
Feb 12	W. B. Crossley + Co.	Timber + repairs	75.5
8	L. L. Mansall	Gravel	5.9
Oct 20	Little Ingthorn + Co. Inc.	Wash Sails	25.2
6	W. B. Crossley + Co.	Gate, cement etc.	52.6
25	D. Beachum + Sons	Keys	12.6
20	Putterworth Bros	Timber fencing	22.15
June 27	Bank interest + Commission		116.6
5	Loss on Opening Day to Boston Hill Ground (less receipts) as per statement		182.8
			46619.11
Nov 30	Balance in hand	Bonds	162
		Cash	18143.43

Handwritten signature and date: 11/30/57

50133