

## OUTLANE CC

The Later Years

# Twelve men

29 MAY 1950 – TEAM PHOTO



Can you recognise any faces on this photo? Do you know who the suited man, sitting on the grass, is? Is he the Club scorer, for example?

# Club pride

1950s – TWO SETS OF STARS



**4 July 1953**



**1<sup>st</sup> XI Lumb Cup Winners 8 July 1954**

# LIQUID ASSETS!

## 1950s – OFF-FIELD DEVELOPMENTS

In 1951 running water was laid on at Outlane's ground...

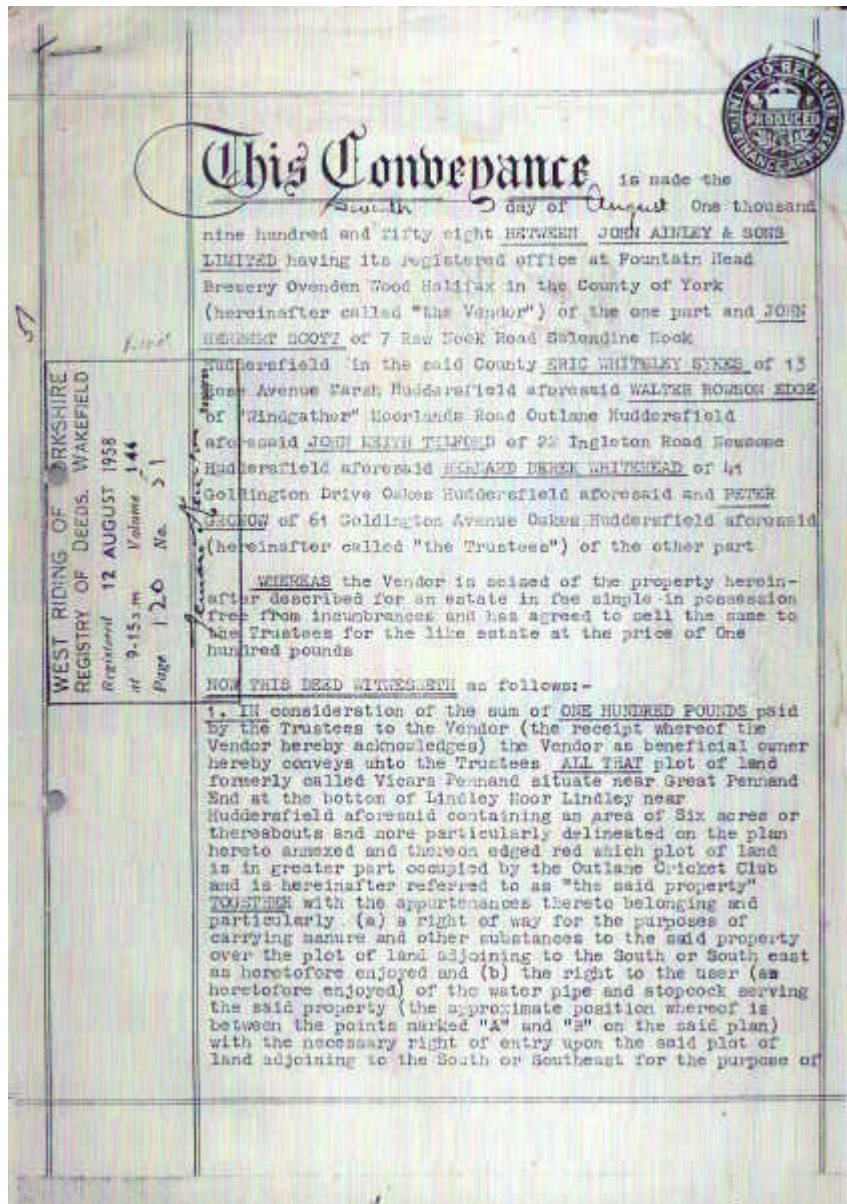


...and then, on 3 April 1958, the Club was able to purchase the ground off Websters Brewery for £100.



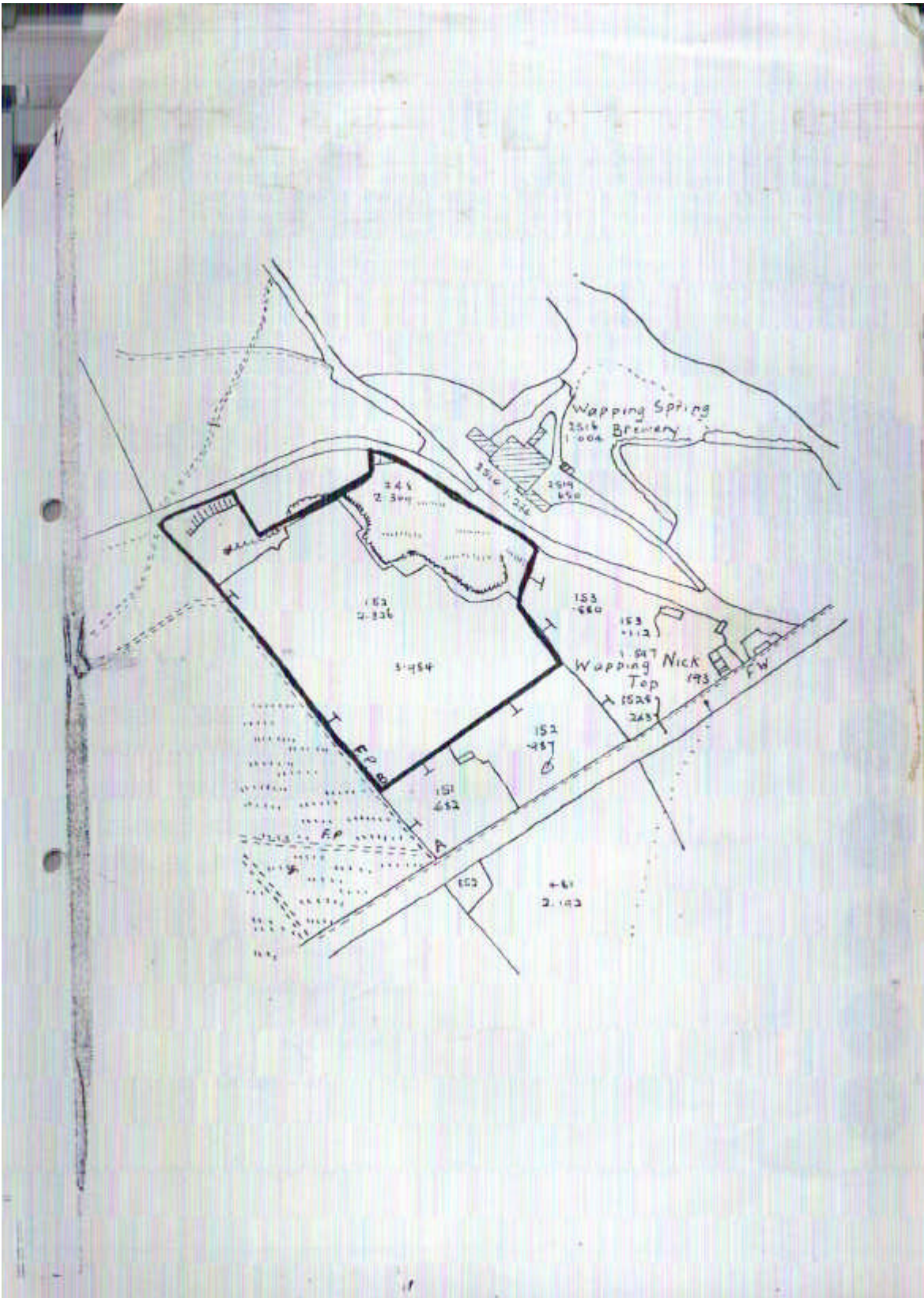
# GOOD DEEDS!

## 1958 – CONVEYANCE DOCUMENTS



After the problems Outlane had encountered in the 1920s and 1930s in trying to secure a permanent home, the opportunity to purchase Lindley Moor for £100 was taken in 1958.

The deeds include an interesting plan of the ground in its pre motorway days.



# quarries and vandals

## 1960s – CLUB MATTERS

The 1960s were brimful with important and interesting developments:

**18 April 1961:** 1st mention of proposed motorway.

**1962:** Huddersfield Corporation were unable to roll the field owing to pressure of work!

**June 1964:** Club officially objects to the coming of the motorway.



**1965:** Ministry of Transport turns down Club's objection re. motorway and Club begins search for a new ground (the MoT say they will require half the ground). The old Acre Mills ground on Moorlands Road was touted as a replacement. A number of other sites were looked at.

**1 May 1968:** Town Council agrees that '*a corresponding area near Peat Ponds be provided*'.

**2 December 1968:** It was resolved to redevelop the remainder of the field after the construction of the motorway by filling in the quarry.

**1 February 1970:** Ground had to be vacated for the building to start on the M62.

**1973:** Vandals deposit the heavy roller over the quarry top.



# MOTORWAY MADNESS!

1968 - THIN BLUE LINE

The planned M62 motorway was not exactly what the Club had planned for!

The Club encountered its fair share of problems securing a permanent home, and now had a massive road-building scheme to deal with!

Minister's help may be sought to solve motorway plan deadlock  
*Sports clubs face disruption*

MR. DENIS HOWELL, MP, the Minister of Sport, is to be written to by the Huddersfield Sports Advisory Council in an effort to hasten a solution to the procedural deadlock which is confronting some local sporting organisations affected by the Lancashire—Yorkshire Motorway proposals.

One of the town's keenest cricketing enthusiasts, Mr. Herbert Robinson, a member of the Town Council and vice-president of the Huddersfield and District Cricket League, is prepared to go to see the Minister himself if it will help matters.

The organisations concerned are the Oulton Golf Club and Oulton Cricket Club. The Oulton-Cable section of the Motorway scheme, which is

claim, is dreadfully slow and this places them in a most difficult position to plan and negotiate for alternative site accommodation.

Huddersfield Corporation was approached by the Sports Advisory Council in February asking if they had any alternative land available for the cricket club, who would lose their field.

The Parks Committee discussed the matter, and decided that there would be no objection to the use of an area of land at Peat Ponds as a cricket field.

When a question was raised in the Council Chamber at the April meeting, the reply given was that the cricket club were "very happy" with that decision.



Lindley Moor—a gift to the Mayor and citizens of Huddersfield for preservation as "an open space for ever," says the inscription on the stone tablet in Lindley Moor Road. But by next summer the bulldozers could be bludgeoning through the heath, blurring a trail for the new Motorway. A notice on the right publishes the Minister of Transport's intention.



The frustration of the Club was summed by its spokesman Mr Gronow, who explained that, ***'We are kept in the dark. Everywhere we turn we seem to hit a brick wall. In official quarters everyone is absolutely non-committal.'***

# Compensation for Outlane clubs not decided

—Mr. Lomas told

MR. KENNETH LOMAS (Lab., Huddersfield West) asked the Minister of Transport what representation he had received from Outlane Golf Club and Outlane Cricket Club in connection with the Outlane-Calder section of the Lancashire-Yorkshire motorway, near Huddersfield, and why negotiations on the subject of compensation were taking so long to complete.

Mr. Bob Brown (Parliamentary Secretary), in a written reply, said, "The cricket club objected to the draft scheme. Both the cricket club and golf club subscribe to the Outlane Objection Committee, who contended at the public inquiry into the scheme that the published line would seriously affect the golf club and would make the cricket ground unusable as such, and suggested an alternative line.

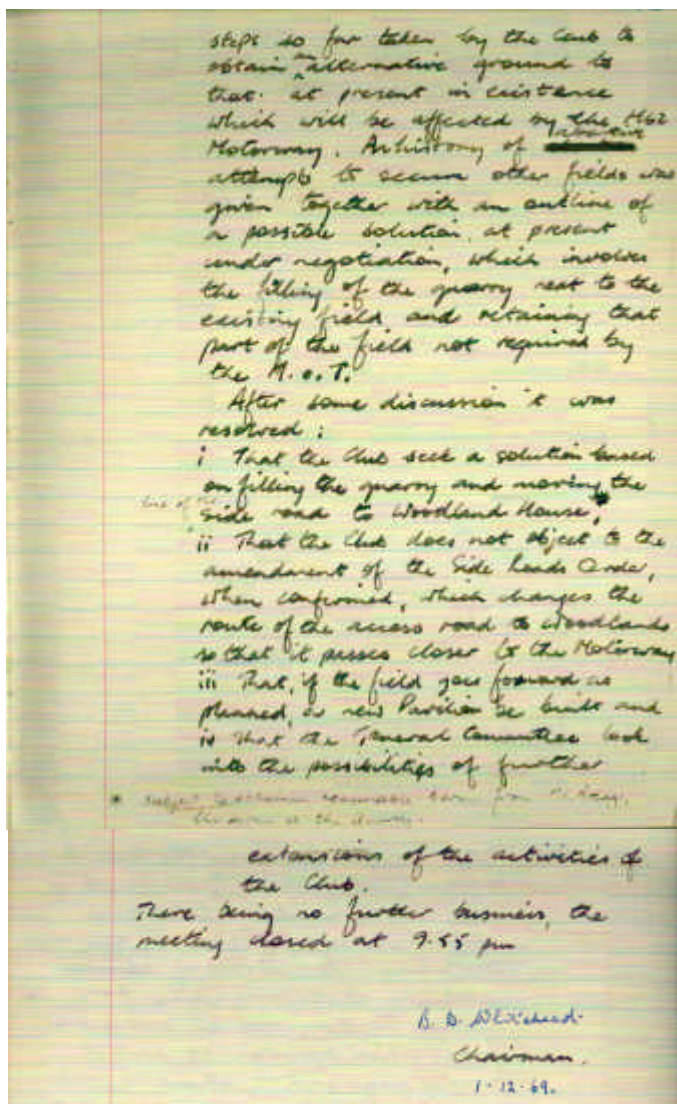
"The inspector recommended that the scheme be made as published, and this was done.

"Negotiations on compensation had not yet been completed because of the complex issues involved and the uncertainty of the clubs' proposals for their future

# WANTED: A 'SOLUTION'

## 1969 – AGM MINUTES

The coming of the M62 caused the Club an enormous amount of heartache as this extract from the Club's AGM minutes illustrates.



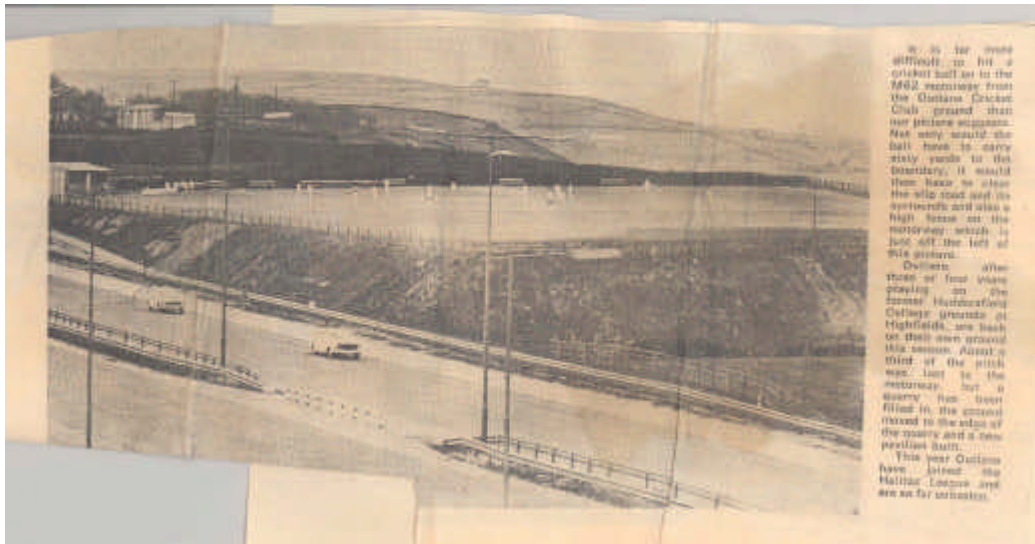
# Highfields and Halifax!

## 1970s – IMPORTANT BUSINESS

**6 April 1970:** It was agreed that the club should hire Highfields cricket ground from the Corporation for the 1970 season and the duration of work on the motorway.



**1974:** Club moves back to the Lindley Moor ground and joins the Halifax League. The old field was in fact one field in from Lindley Moor Road and actually in the line of the motorway.



The new wicket had to be constructed much closer to the edge of Lindley Moor itself and a new pavilion constructed. This was an old pre-fabricated house and was assembled by members.

This provided two changing rooms, two toilets and a central area for teas. There were glazed windows – an improvement on the old pavilion – and water was connected.



**1976:** Momentous decision taken to lay on electricity and subsequently for the bar to be installed. Webster's Brewery (once the club's landlords) agreed to assist in this venture.

# HAT-TRICK!

1975 – TREBLE WINNERS



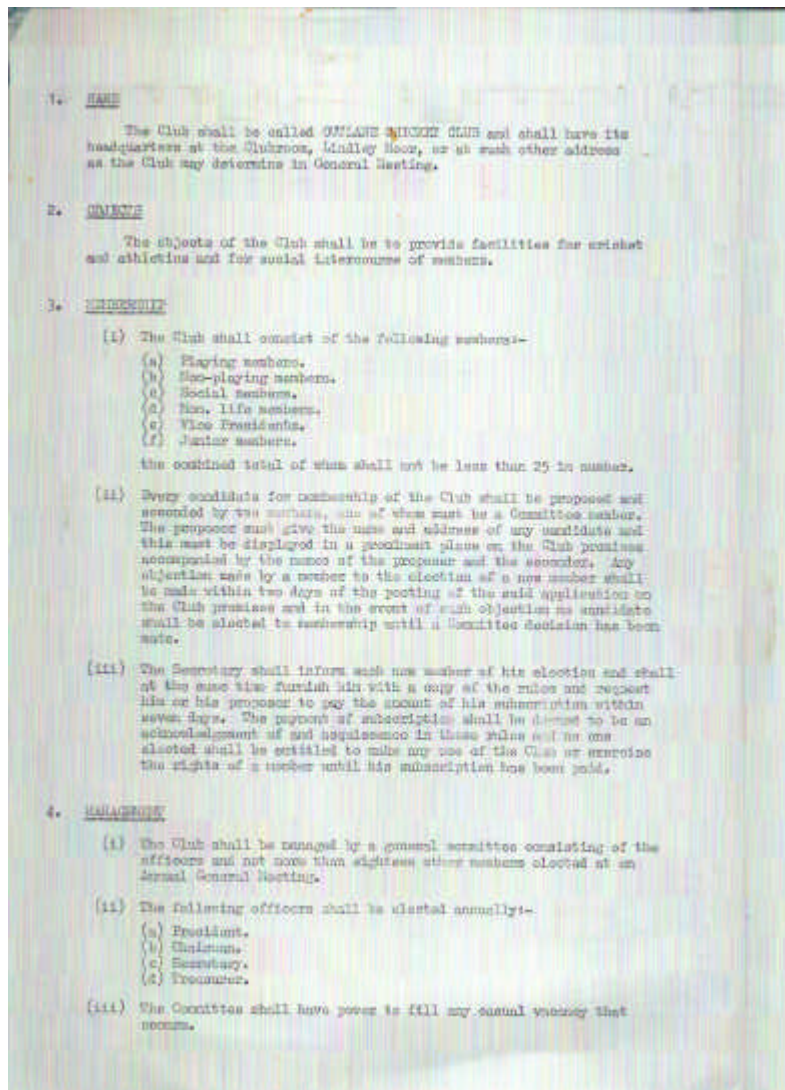
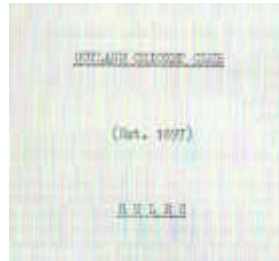
Outlane Cricket Club have had a successful year, winning three trophies in the Halifax League. Members of the team look on as captains (from left) Edmond Copeland, John Edge, Peter Roscoe, David Green, hold up the Parish Cup, the Under 18 League Cup and the Under 14 League Cup. The club are also in with a chance of promotion to the First Division.

The all-round strength of Outlane CC came to the fore in 1975 when both senior and junior sides were successful.

The 1st XI won the Halifax Parish Cup and both the Under-18 and Under-14 sides won their respective league titles.

# 'SOCIAL INTERCOURSE'

## 1977 – CLUB RULES



# Flat tyre stops play!

1978 – MOTORWAY INCIDENT



## *Puncture holds up cricket*

MOTORWAY madness hit Outlane cricket club on Sunday.

When a car pulled on to the hard shoulder of the M62 with a punctured tyre play in the second even Halifax League Copley Shield game between

Outlane and Websters had to be held up.

The car driver had chosen to pull up exactly behind the Outlane bowler's run-up and was causing a distraction to the Websters batsman. "Play had just got under way when this car pulled up directly in line with the bowler's run-

up, and although the motorway is on a slightly higher level than the cricket pitch it put the batsman off," said Outlane skipper Keith Spivey.

"Despite all our efforts we could not capture the driver's attention and he continued working on replacing the wheel. So we

then had hastily to construct a temporary sight screen because the ones we usually use had been damaged in a storm last summer."

The game did re-start and Outlane took full advantage, going on to win by 10 wickets with Spivey hitting an unbeaten 34.

# GROUND WORK

## 1980s – LINDLEY MOOR DEVELOPMENTS

In 1981 the Clubhouse was extended.

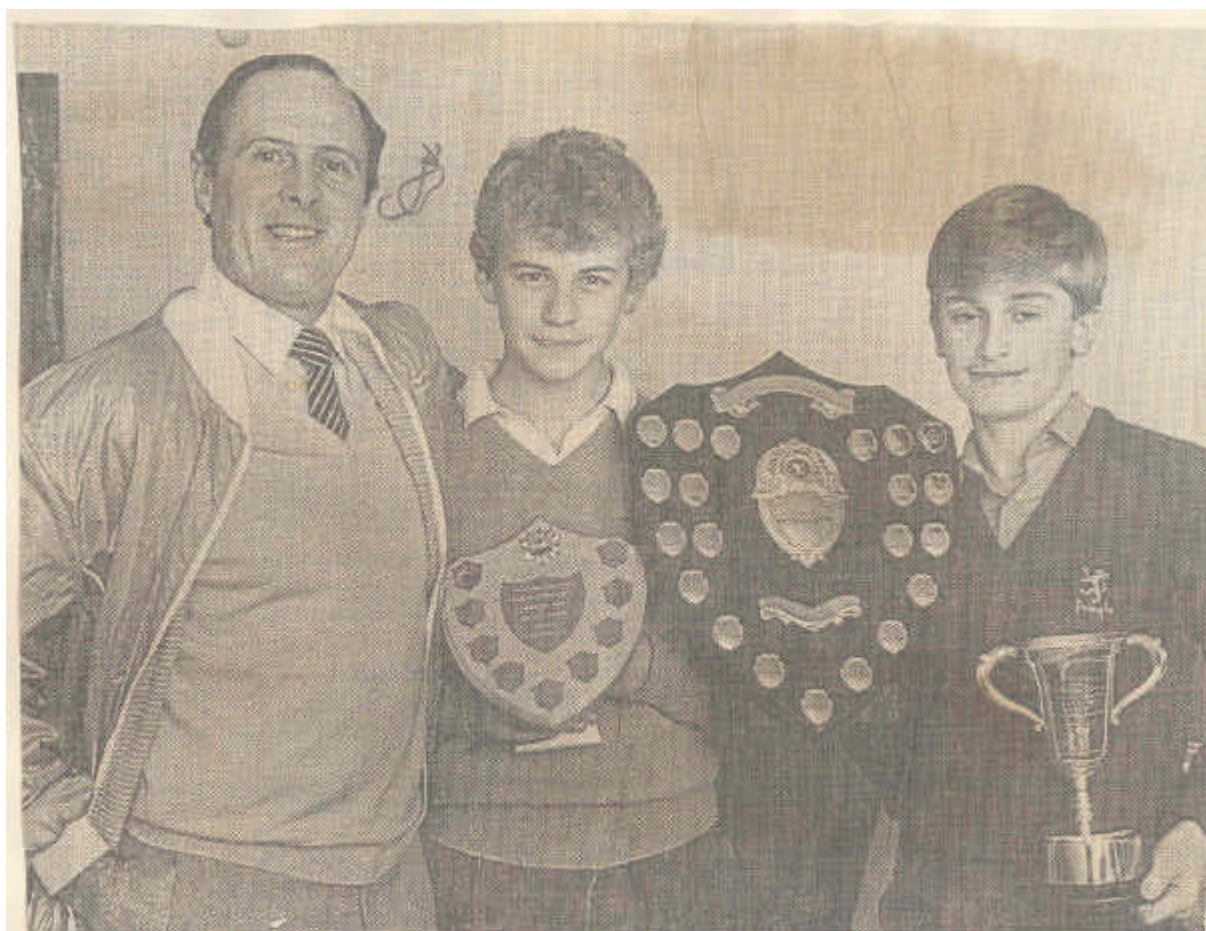
A portable building was acquired to provide changing rooms and the old Brook Motors' football pavilion was salvaged.



**1982**

# Geoff lands in village!

1984 – BOYCOTT AWARDS



7/55/84

YORKSHIRE'S controversial batsman and committeeman, Geoff Boycott, last night took a break from the political in-fighting which is again a feature of the county cricket club's close-season when he presented the prizes at Outlane Cricket Club's junior section presentation evening.

Boycott is pictured with Under-14 players Andrew Pearson (left)

# Kitchen blaze tragedy

## 1997 – CLUBHOUSE ACCIDENT

On 30 August 1997 there was a fire at the Club, caused by a faulty thermostat in the kitchen.



Extensive damage was caused by the smoke, which meant having to nearly totally renovate the whole of the clubhouse.

# Battle of the leagues!

1995 – HALIFAX/HUDDERSFIELD DUEL

## Outlane festival

OUTLANE Cricket club are holding a festival week, starting on Monday, when a team representing the Halifax League take on a Huddersfield Cricket Association XI.

On Tuesday, a David Law XI face the Huddersfield Central League, and the winners of that match will meet the winners of the previous night's game in the final on Friday.

On Thursday, a team representing past Outlane players will face the present side, and secretary Jake Smith has appealed for former members to contact him on Huddersfield 646773. The side will be skippered by Rastrick's John Edge.

All matches start at 6.15pm, and comprise 15 eight-ball overs with a minimum of four bowlers to be used.

The week closes with Outlane's Halifax League match against Copley. A barbecue will be held each evening at the end of the matches.

# 100 not out

1997 – CENTENARY CELEBRATIONS



CENTENARY YEAR  
1897 — 1997



**1997 Team**

# 'HARRY' & GOOCHIE POP IN!

2000/2004 – SPORTSMEN'S DINNERS



2000

# OUTLANE CRICKET CLUB



## SPORTSMAN'S DINNER 2004

Cedar Court Hotel

Huddersfield

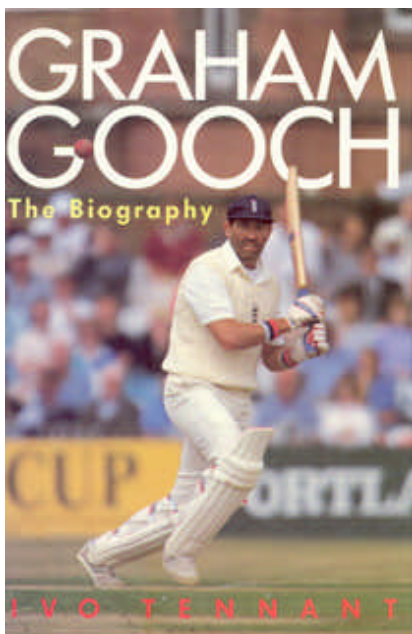
Thursday 11th November 2004

Kindly Sponsored By:



In 2004 Outlane C.C. put on a spectacular Sportsman's Dinner at the Cedar Court Hotel, Ainley Top.

The main speaker at the Dinner was Essex and England legend Graham Gooch.



OUTLANE CRICKET CLUB



0446

# BRIGHT FUTURE

2005 – CLUB TODAY

Today, Outlane CC possesses one of the most interesting and curious of grounds. It is high, wide and handsome, and dominated by the sight and sound of the nearby motorway.

