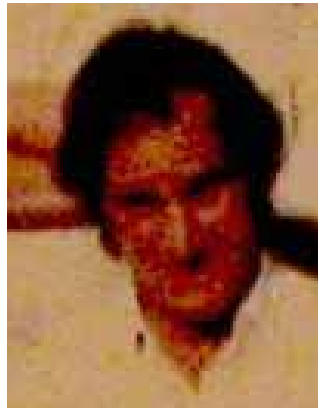


# THE BEST GROUND IN THE LEAGUE?

By Gordon Akroyd

I joined Sowerby St Peter's at the beginning of the 1980 season just after moving back to the Halifax area from Manchester.

My first memory is of the early season nets, which were in their old position at the northern end of the ground under the trees. I was pretty useless but got an odd 2nd XI game under the captaincy of Ken Wharvell (a real character, and very hard to impress - below).



The club's origins and associations with the church and the Rawson family are similar to many clubs in the league but its position in a fairly large housing estate where it acts as a social centre is I think unique in this area. The only similarly placed ground is Illingworth which I don't think is quite as much of a social hub.

The ground itself is undoubtedly one of, if not the best, in the league with decent-sized boundaries, a well maintained square and surrounded on three sides by lines of trees. The clubhouse is stone clad, light and well appointed. There are two good quality outdoor nets and the facilities of Ryburn High School are just across the road.

I am currently secretary, treasurer and under-13's team manager. I deal with correspondence, the main club accounts (but not the bar accounts) and take the under-13s games on Thursday evenings.