

# Focus on - Triangle Cricket Club

## Grassy paradise

The third in a Saturday series on Calderdale cricket clubs by Dr Peter Davies of the Cricket Heritage Project at Huddersfield University

**T**riangle Cricket Club was founded in 1862. It was originally attached to Triangle Reading Club, which was based at the Old White Bear Public House.

Initially, the club had 40 members. They played their first match on October 20 1862 against Sowerby.

Grassy Bottom, Triangle's cricketing HQ, staged a special athletics event on Whit Monday, 1878.

The club won the Halifax Shield Competition twice in succession - in 1886 and 1887. In the following year, 1888, they entered the Halifax Parish Cup for the first time.

Around 1890, rugby was played on Triangle's ground. But this was brought to an end when a bank was built to allow the field to be flooded, so that skating could take place there in the winter!

Triangle bagged the Halifax Parish Cup for the first time in 1903. In the same year, Jack Steele was employed by the club as professional and captain.

In 1913 Triangle officials attended the meeting at which the Halifax Parish Cricket League was officially formed.

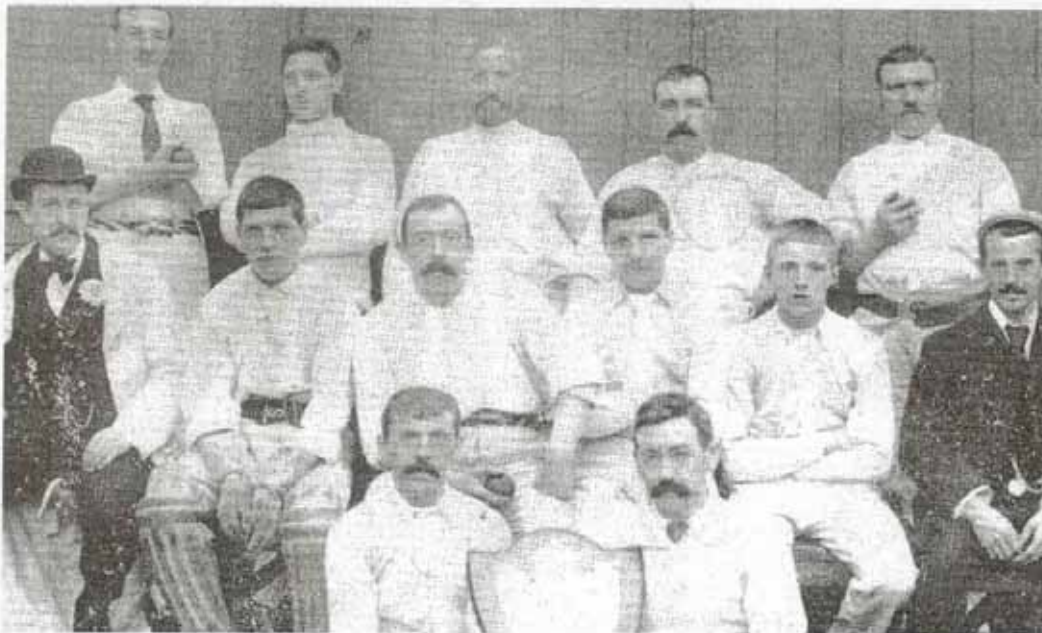
Grassy Bottom was bought for £650 in 1927 by local mill-owner Colonel Tom H. Morris. Morris then presented it to a board of trustees acting on behalf of Triangle CC.

Triangle scooped the Parish Cup in 1930 - beating Smith Bulmer's by 96 runs - and then again in 1947 and 1953 and 1955.

In 1968 the club's first XI and second XI both tasted success - topping their respective Division One tables. But Triangle lost in the final of the Parish Cup, even though they were much fancied.

The scoreboard at Grassy Bottom moved in 1982 - from atop the pavilion to the other side of the ground.

Triangle CC boasts its fair share of women members and supporters. The



Early Triangle side: the Grassy Bottom club's team from 1896

club also has a female secretary - Margaret Whippy. In short, women are now fundamental to the running of local cricket clubs. Triangle included.

On matchdays the club's female supporters tend to congregate near the tea hut and main entrance

And, like many other local cricket clubs, Triangle rely to a significant extent on the goodwill of local sponsors.

Grassy Bottom remains one of the most beautiful and atmospheric cricket venues in Calderdale, and in recent decades the club have claimed more than their fair share of silverware.

### FACT FILE

**Founded:** 1862  
**Ground:** Grassy Bottom  
**Former Grounds:** None  
**Nearest Landmark:** Triangle Inn  
**Nearest Other Clubs:** Stones, Sowerby Bridge, Barkisland  
**League:** Halifax  
**Former Leagues:** Played in Halifax Shield and Halifax & District League before joining the Halifax Parish Cricket League in 1913/14  
**Greatest Moment:** Celebrating their cen-

tenary in 1962 - earlier than many clubs  
**Local Hero:** Dick Rodger. A prolific run-maker whose career spanned four decades from the 1950s to 1980s. He has also been club captain and president  
**Bizarre Fact:** In the early days, when the team played fixtures in Lancashire, villagers knew the results before the team returned home... as the scores were sent by carrier pigeon to the Triangle Inn, where all the supporters were drinking!