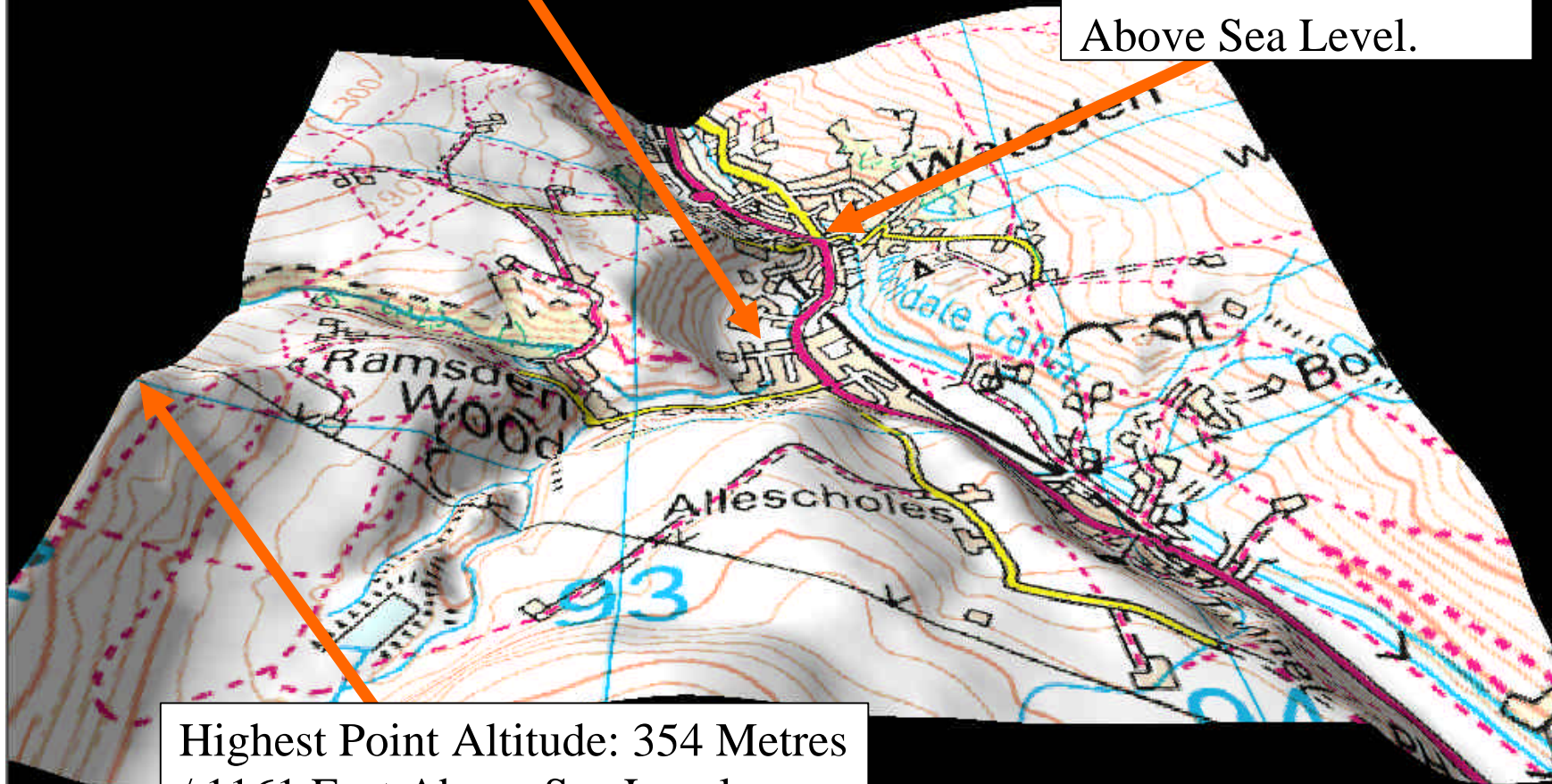


3D Map of Walsden Cricket Ground and the Surrounding Area.

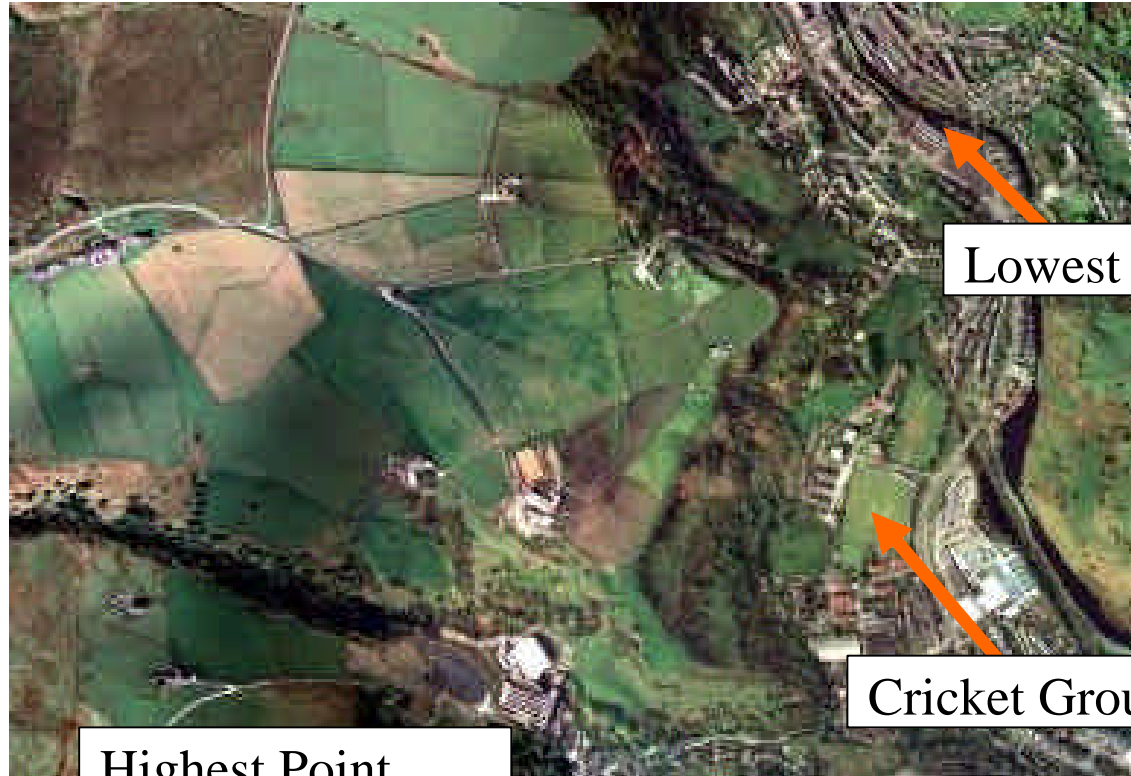
Cricket Ground Altitude:
164 Metres / 538 Feet
Above Sea Level.

Lowest Point Altitude:
159 Metres / 522 Feet
Above Sea Level.



Highest Point Altitude: 354 Metres
/ 1161 Feet Above Sea Level.

Aerial Photograph of the Area Shown in the 3D Map



Lowest Point.

Cricket Ground.

Highest Point
(Just Off Picture).