

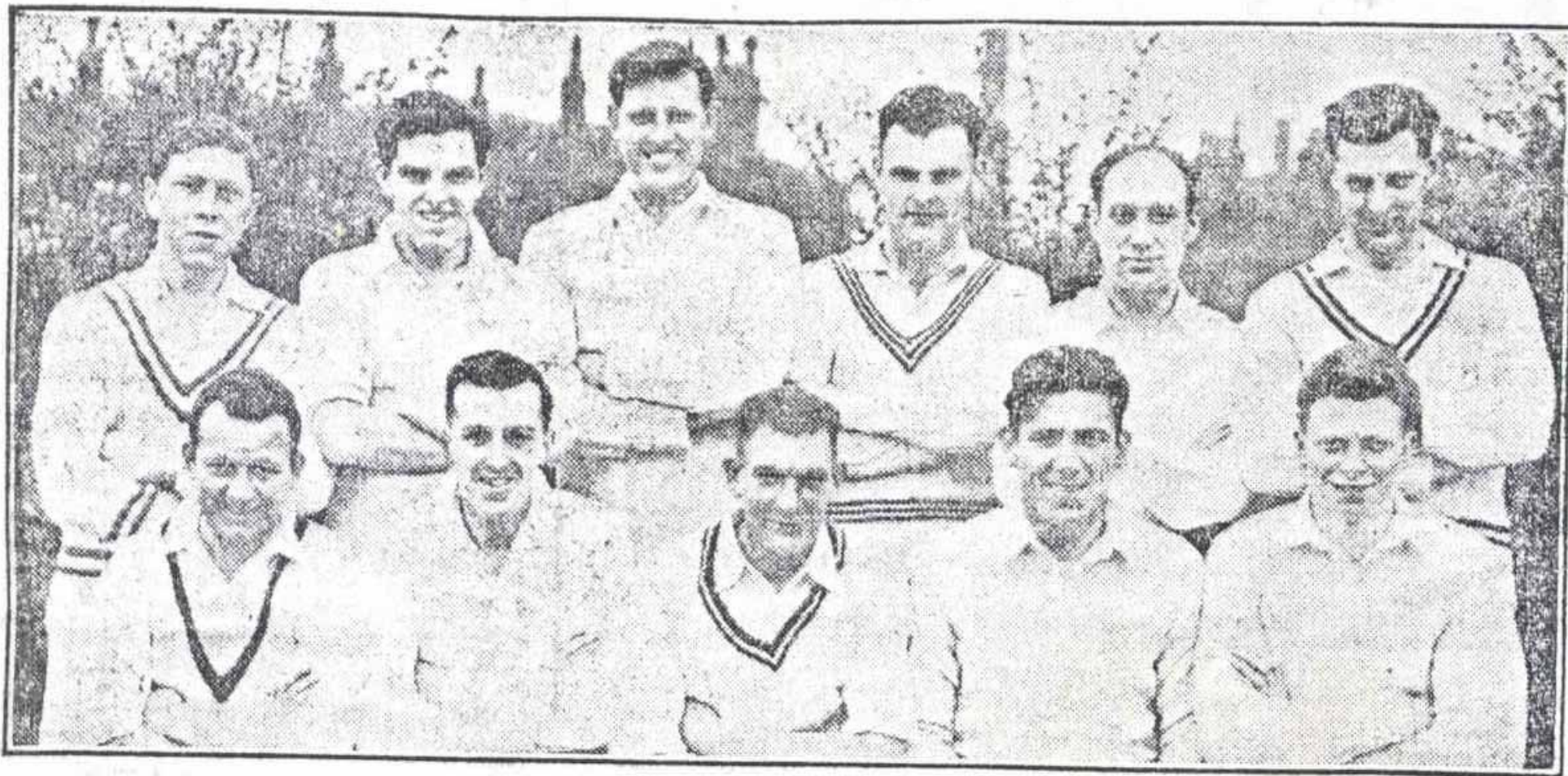
1950



1952

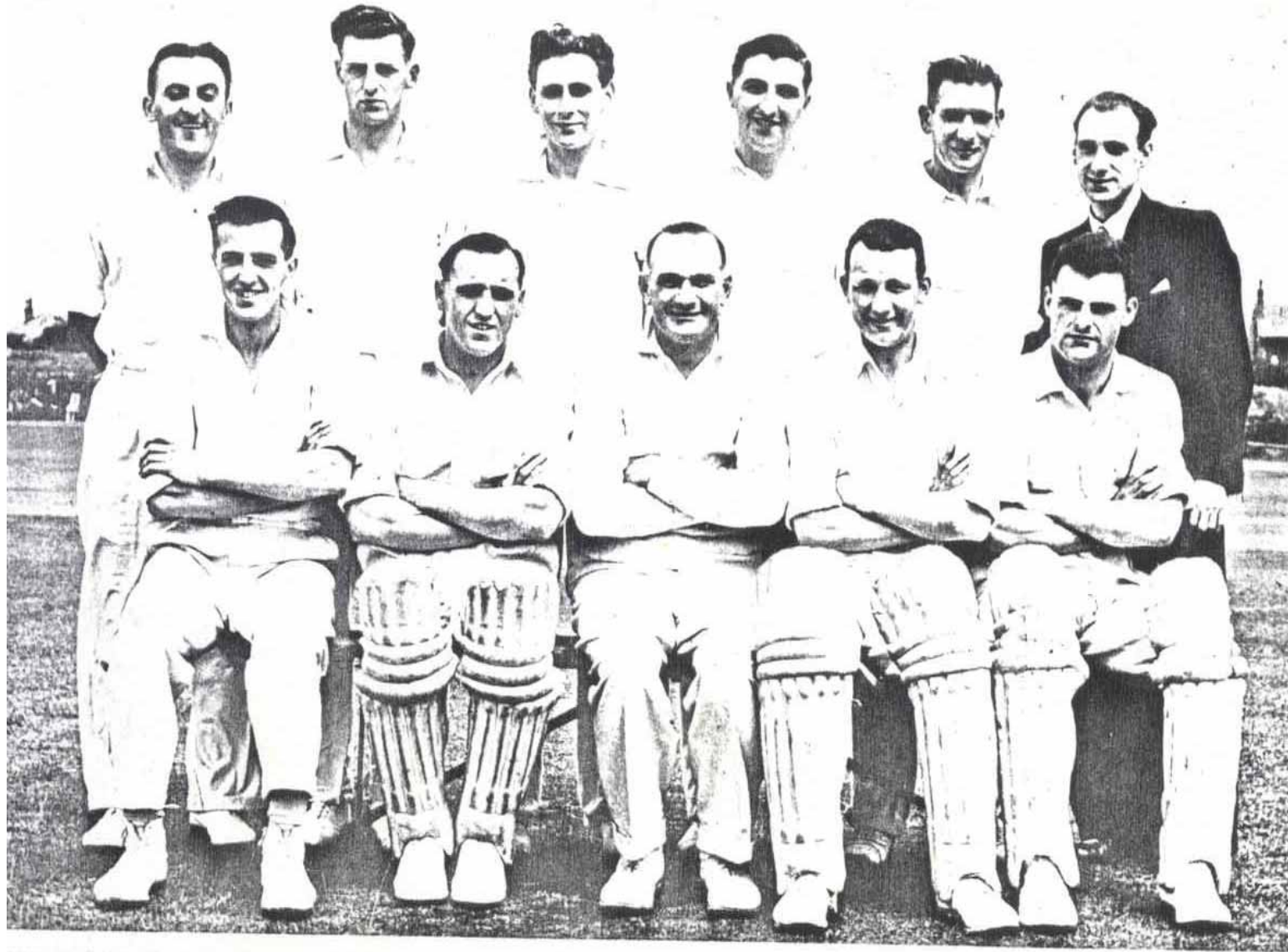


THEY DREW WITH THE CHAMPIONS



Pictured above is the Birstall first eleven side which drew with Staincliffe on Saturday. They are
Back row (left to right)—S. Speight, J. Howden, M. Womersley, W. B. Smith, H. Sugden, and E. Blakeley
Front row (left to right)—J. Bedford, K. Haley, H. Hainsworth, G. Bruce, and R. Thompson.

1954 1st XI



Standing (left to right): L. Thorpe, E. Blakeley, D. Brown, E. Womera-
ley, H. Hainsworth, and H. Sugden.
Seated (left to right): K. Haley, S. Naylor, H. Bailes (captain), J. Bed-
ford, and W. B. Smith.

1954



1954

