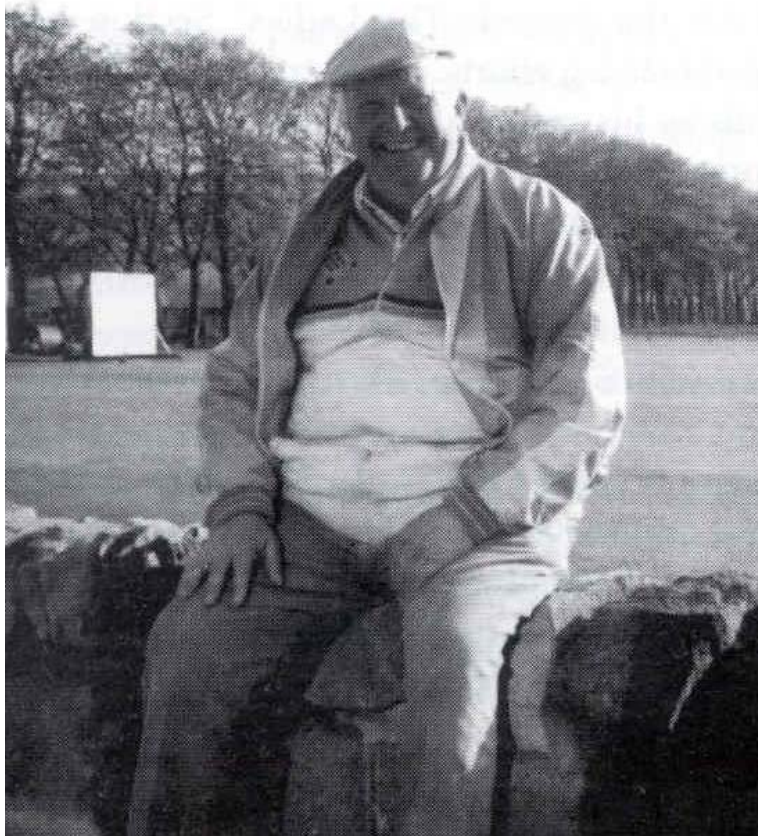


CONSISTENTLY INVOLVED

Sheila Pettengell on her family and the club

I've been involved since about 1980. My two sons played and my husband, Keith, was the groundsman.



Keith Pettengell

Keith had been at the club since 1972 and always took the boys to matches. I've been consistently involved at the club since then.

Some time ago we had a ladies committee – though it doesn't really exist as such today.