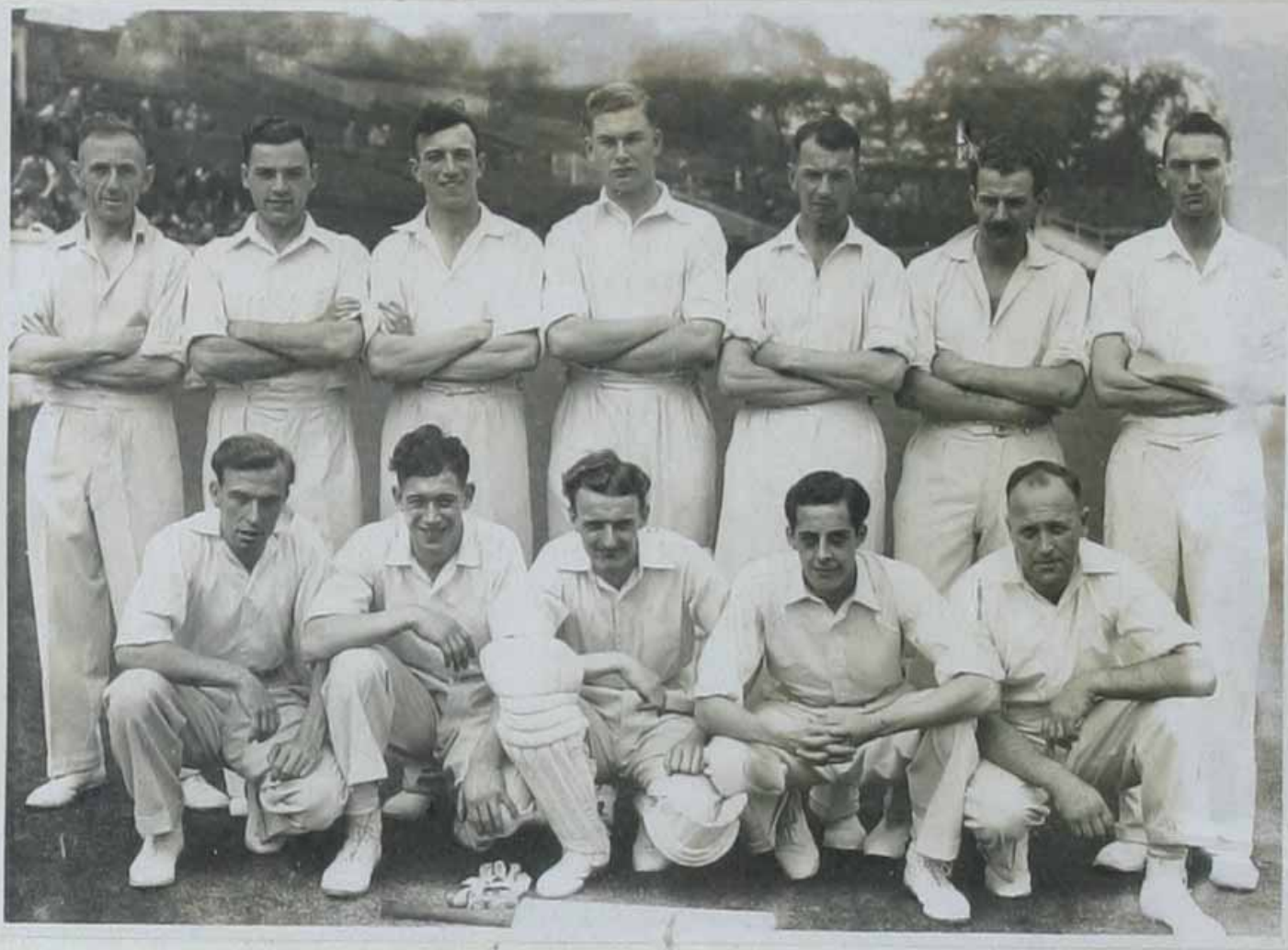


1950



A. Hartley · J.T. Newsholme · D. Hirst · M.S. Woodcock · A. Smith · S.B. Webb · J.M. Barritt.

A. Clarke · R. Hirst · H. Aspinall. (Capt.) · R. Booth · D.G. Mallinson.

1950

LIGHTOLIFFE CRICKET CLUB • SEASON 1950.
WINNERS OF PRIESTLEY CUP • BELL TROPHY • PROMOTION TO DIV A

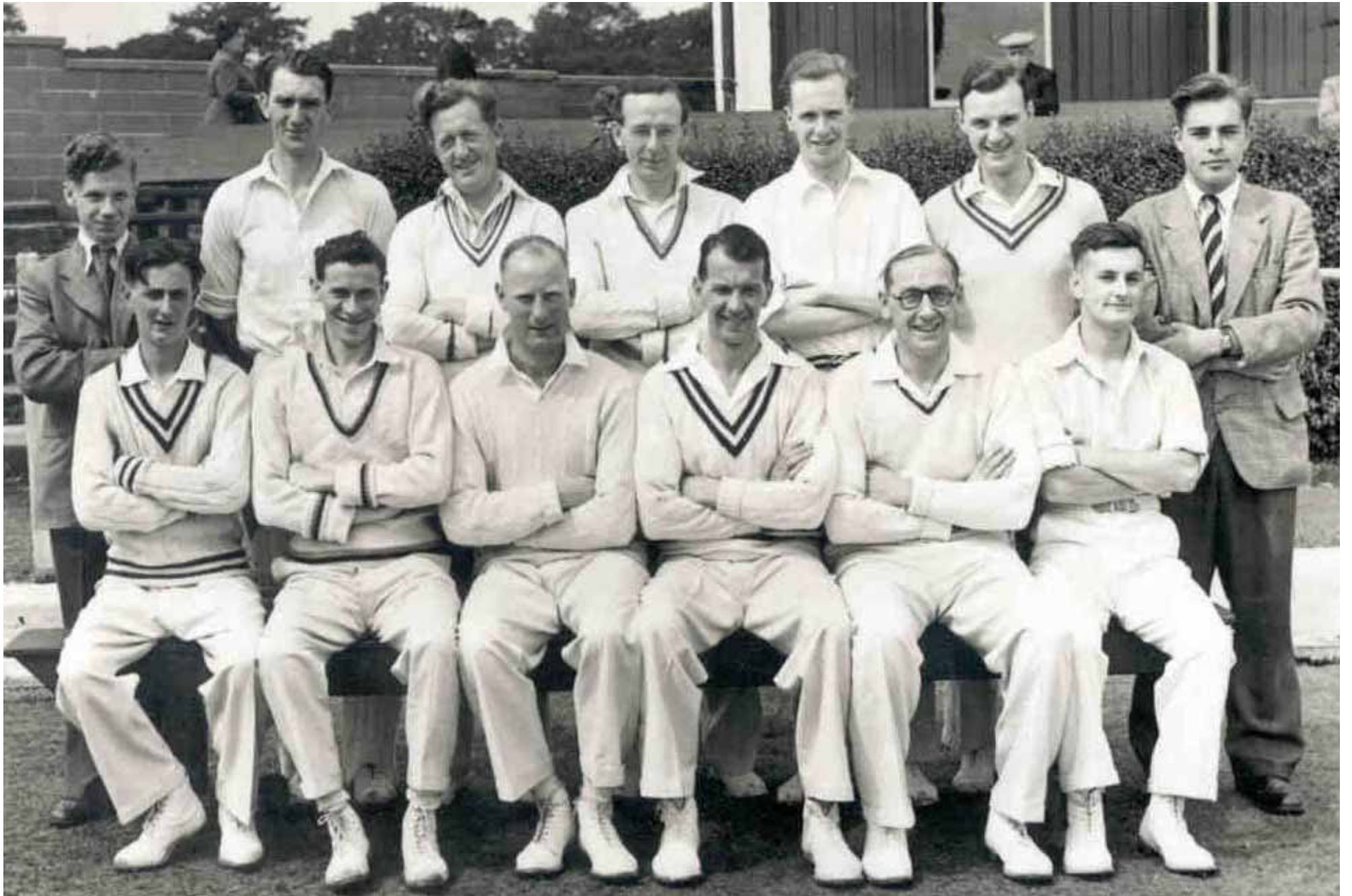


Inner Row: B. Brooks • D.G. Mollinson • R.A. Walker • C.S. Pickard • M. Whitaker • J.E. Holroyd

Back Row: Mr J.E. Mitchell • M.S. Woodcock • A. Smith • A. Clarke • J.K. Barrett • S. Gilchrist • G. Hirst • Mr G.M. Richardson
- PRESIDENT - - SECRETARY - - CAPTAIN -

Front Row: G. Bottomley • J.T. Newsham • R. Hirst • H. Aspinall • A. Hocking • R. Smith

1952



1955

LIGHTCLIFFE CRICKET CLUB

1955



H. CROWTHER (SENIOR) A. ROBINSON M. I. WADE (LOADS) L. BELL A. HORNER R. A. WALKER D. B. MADON H. WEST J. A. NAYLOR
J. M. BARRITT (SECRETARY) C. S. PICKARD A. B. MOORE K. R. H. HIRST H. ASPINALL (CAPTAIN) A. HARTLEY E. WALMSLEY G. BINNO W. A. GOSSEP
A. PICKARD P. W. ROBINSON (WASHMAN) G. M. C. THOMPSON (CHAIRMAN) S. TEWATE A. HEATON J. GOMERSALL (PROBATION) H. SHARPE L. G. TAYLOR W. ASPINALL J. W. LEES A. W. KAY (GROUNDSMAN)
J. E. L. HOLROYD D. GARSIDE
M. COLLINS R. BOOTH A. B. HAIGH J. C. HUNTER P. S. TREVITT

1959

