

▶ CRICKET HISTORIES: Outlane – the fourth in our third series...

Club overcomes new motorway and blaze

OUTLANE Cricket Club was formed in 1897 as Outlane Methodist New Connexion Cricket Club.

In 1898 a tent (pavilion) was purchased for £2-10-0d and in 1903 a subscription appeal was launched to pay for a new pavilion costing £18.

The 1917 season saw the cricket ground requisitioned by the wartime authorities for food production and the club effectively ceased to function.

A momentous meeting took place in April 1919 at which the club decided to 'take hold' of the field and also change its name to Outlane Cricket Club.

The church trustees were also asked to renounce all claim to the club.

The club originally played their Huddersfield Association fixtures near Outlane Golf Club but in 1929 they moved to a new ground at Cote Farm, and then in 1934 they relocated to Lindley Moor.

In 1951 running water arrived and then, on April 3 1958, the club was able to purchase the ground from Websters Brewery for £100.

The 1960s were dominated by motorway-related troubles.

The first mention of the proposed M62 came in 1961, and by June 1964 the club had made its first official objections.

In 1970 the club was told to vacate their ground so building could start – and they only returned in 1974.

In between they lined the Highfields ground in Huddersfield for home fixtures, although it was also mooted that the club might move permanently to another site, either in nearby Mount or Salendine Nook.

On their return to Lindley Moor, the club laid a new wicket and erected a new pavilion.

They also had electricity and a bar. In 1975 the 1st XI won the Halifax



Parish Cup and the Under 18s and Under 14s won their respective league titles – a golden summer.

On August 30 1997 there was a fire at the club, caused by a faulty thermostat in the kitchen.

Extensive damage was caused by the smoke, which meant having to renovate the whole of the clubhouse.

In 2004 Outlane CC put on a spectacular Sportsman's Dinner at the Cedar Court Hotel, Ainley Top.

The main speaker was Essex and England batting legend Graham Gooch.

The club has recently redeveloped its pavilion building – and, on account of its location by the side of the M62, remains one of the noisiest clubs in the area!

AROUND THE WICKET

...with historian Peter Davies



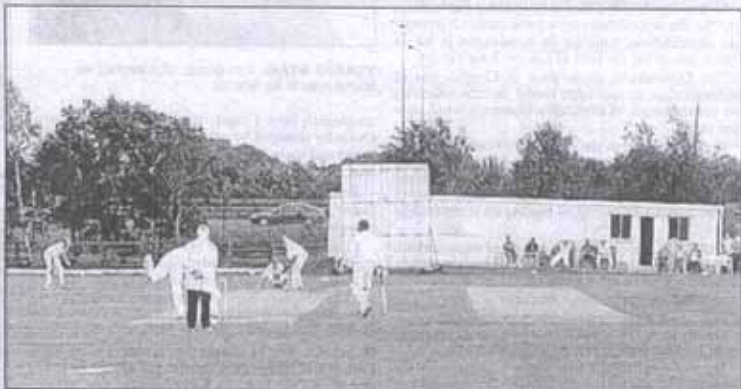
*General Meeting
April 29/19 Outlane & Huddersfield
No present !!*

This meeting was held to agree or decide when we should take over full control of the field.

We had an interesting account from Mr Brown. Telling of the interview he had with Mr Tom Robson on the question of taking the cricket field for allotments. He gave a brief history of how the field was broken up for the purpose of food production.

It was agreed that we take hold of the field at the end of this year 1919

Resolved that the Sec write the trustees



'Noisiest ground in district'

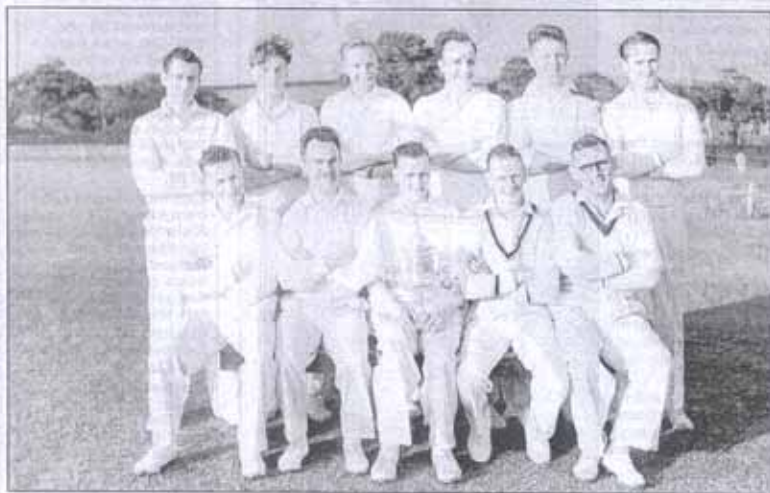


PHOTO HISTORY: Clockwise (from top): an Outlane CC line-up from the 1990s; the historic minutes from the 1919 general meeting; a view of the cricket ground; motorway problems reported in the 1960s and the 1954 Joe Lumb Cup winning side.

Minister's help may be sought to solve motorway plan deadlock

Sports clubs face disruption

Mr. [Name] has written to the Minister of Transport, Mr. [Name], asking for his assistance in solving the deadlock over the proposed M62 motorway route. The route, which would pass through the village of [Name], has caused a major disruption to the local sports clubs, particularly the [Name] Cricket Club. The club has been forced to vacate its ground and has been unable to play any matches since the route was announced. The Minister is being asked to intervene and to ensure that the club is able to return to its ground as soon as possible.