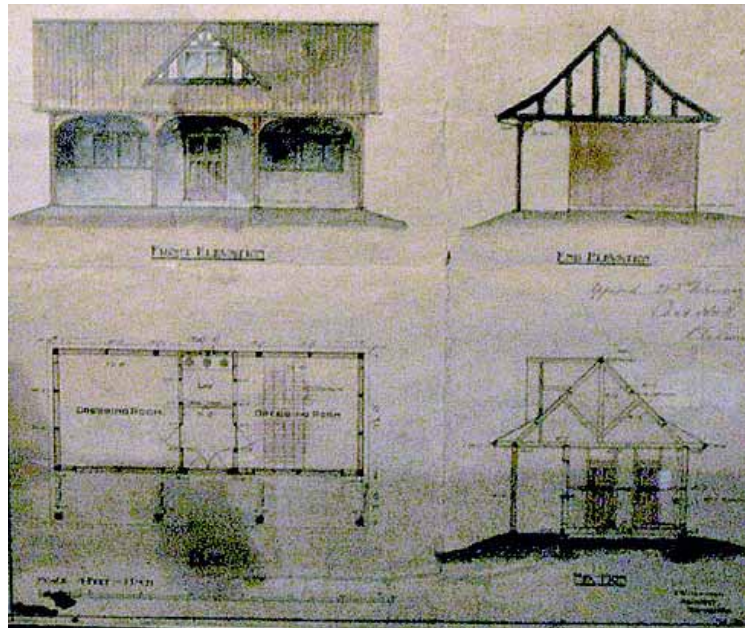


## Thurstonland CC – A Century for the Pavilion!

By Toby Lock

This year the players of Thurstonland CC won't be the only ones looking to score a century. 2007 sees the pavilion at Marsh Hall Lane approaching in its own century – nearly 100 years old!

The pavilion has had many renovations made to it over the years - from its original incarnation in 1909 to what we see on the boundary today.



To celebrate this amazing feat, local builders Jewson have agreed to donate £500 worth of materials to help Thurstonland with further rebuilding. Plans are beginning to formulate around the club to replace or totally renovate the pavilion, to help bring in the next century in a more modern way.

The designs will keep the familiar pavilion style in place, ensuring its place in history. Hopes are for better access for the disabled and improved changing facilities to accommodate mixed-sex groups.

Everybody involved at Thurstonland Cricket Club would like to thank Jewson Ltd for the generous donation, and hope a new pavilion will help the club improve their already booming relations with the local community.