

1937?

New Tea Room
1935

New gate House/garage 16'x8'x10'
1938

N

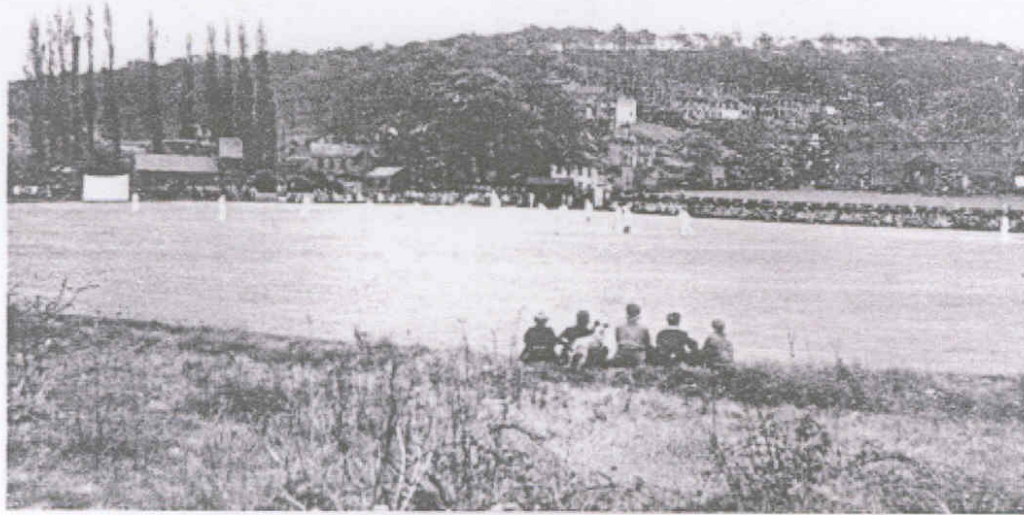


Photo not before 1938

ARMITAGE BRIDGE

The Armitage Bridge Cricket Club was formed in 1848 and first played in a field on Netherton Moor. Later, moving a little nearer the wood, eventually played in the park of Armitage Bridge House. It is interesting to note that in the early stages of the club's development bowlers were not allowed to raise their arm above the shoulder when delivering the ball. Equally interesting is the fact that friendly games were usually played for a prize which consisted of a hall or two bats.

Not until 1876 did the club move to its present quarters and again we have the story of voluntary labour, for hundreds of tons of soil were needed to level the ground. The labour was provided and the result provides the visitor with a ground which may be regarded as one of the most beautiful playing arenas in the county.

Armitage Bridge are original members of the League and, as recorded elsewhere, shared the championship with Slaithwaite in the first year of the competition. Indeed, they had a fine side in the early nineties and it is not generally known that in 1893 W. A. Oldfield, a great stalwart of the club in those early days, scored 236 against Paddock in the Lumb Cup. The club have had six of their members taking part in County championship games and, while having struggled during the last 20 years, it has, thanks to a loyal band of workers, kept the old flag flying and produced players from the village without seeking outside help to any great extent.

Cricket at Armitage Bridge changes little. Members are prepared to work for their play and enjoy the game after cutting and rolling and, while honours may not have come the club's way as often as with other clubs, it does not cause either envy or worry.

ble vs the writer ?