

# PAVILION DESTROYED BY FIRE

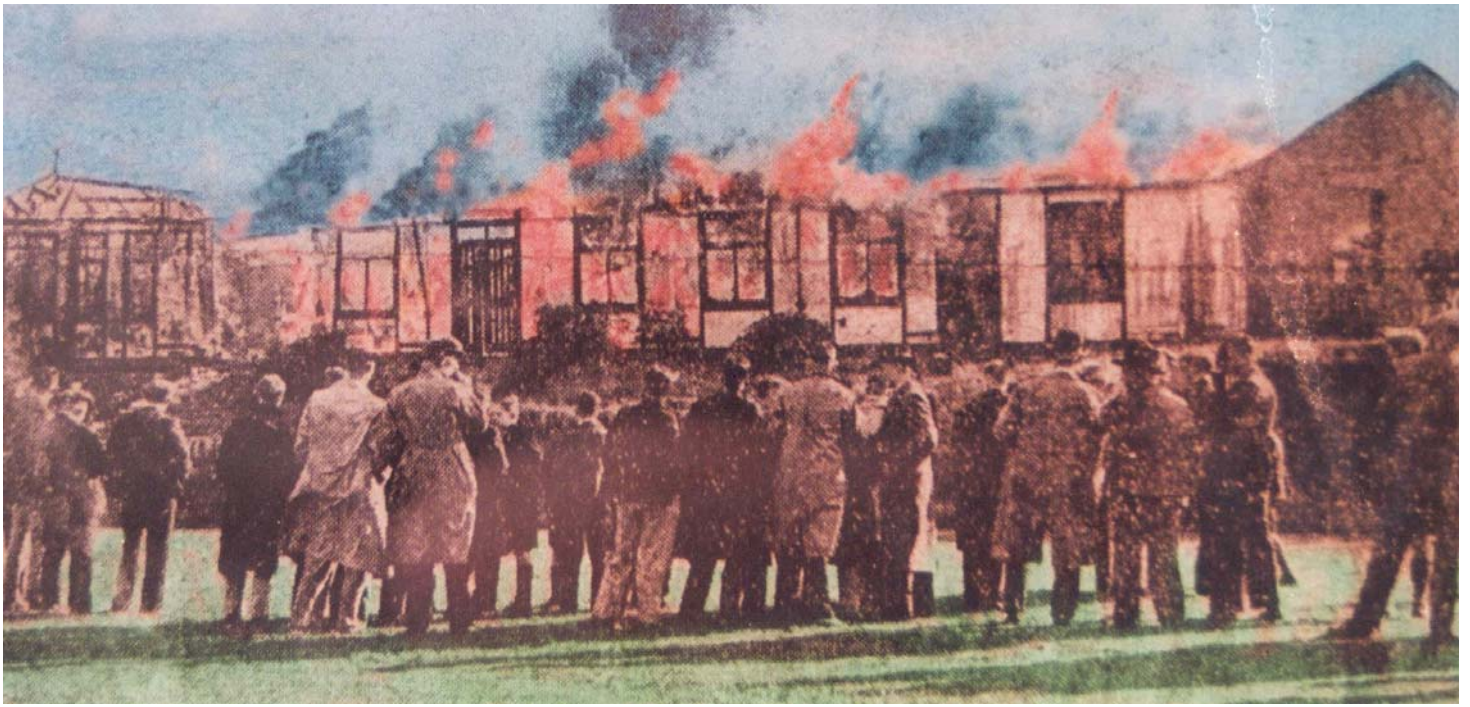
Marsden Blaze

## CRICKET CLUB'S SERIOUS LOSS

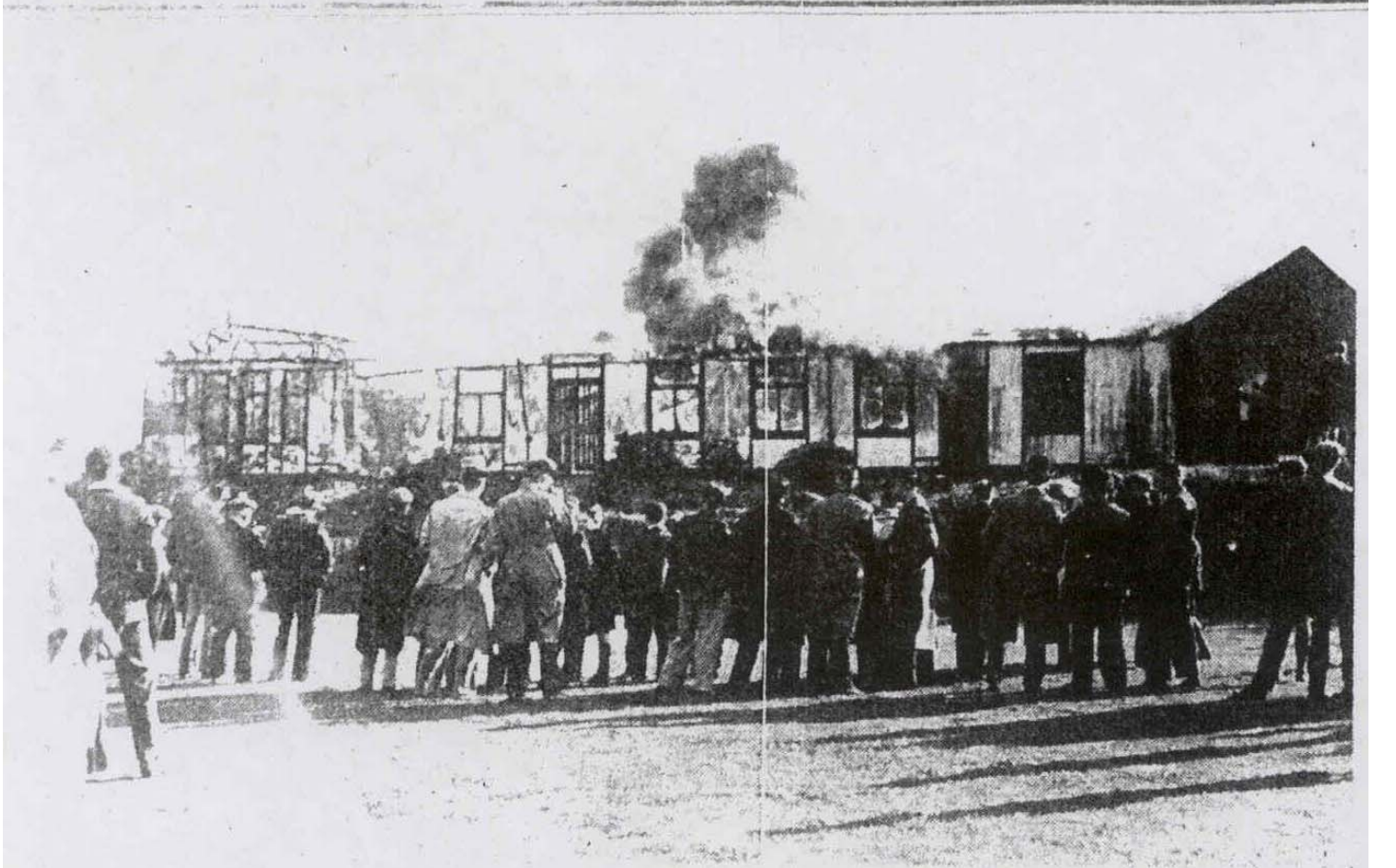
Marsden Cricket and Bowling Club suffered a serious loss when their cricket pavilion and contents were totally destroyed by fire yesterday afternoon. The outbreak, the cause of which is not definitely known, was discovered about 1-20 p.m. by a resident in the vicinity, who gave the alarm, and a message was put through from the golf house to the Marsden Fire Brigade, who were quickly in attendance.

The flames had got a strong hold of the building, which was constructed of wood, and owing to insufficient pressure of water in the mains the brigade were unable to do anything to save the building, which was razed to the ground. The flames were fanned by a gale of wind blowing down the valley. The bowling pavilion, built of brick, was also seriously damaged.

The cricket pavilion was about fifteen to twenty yards long and about ten to twelve yards wide. It had served the club for the past ten or twelve years. The damage is estimated at about £1,000, only a small part of which is covered by insurance.



LEICESTERSHIRE DAILY EXAMINER, MONDAY, OCTOBER 19, 1936



MARSDEN CRICKET PAVILION DESTROYED

The Marsden Cricket and Bowling Club's pavilion, a wooden building, was completely destroyed by fire yesterday.