

# OUT IN THE MIDDLE!

## PLAYERS & UMPIRES

The inter-war years witnessed a remarkable blossoming of women's cricket.

This development threatened one of the major assumptions about sport, and cricket in particular; namely, that it was very much a male preserve.



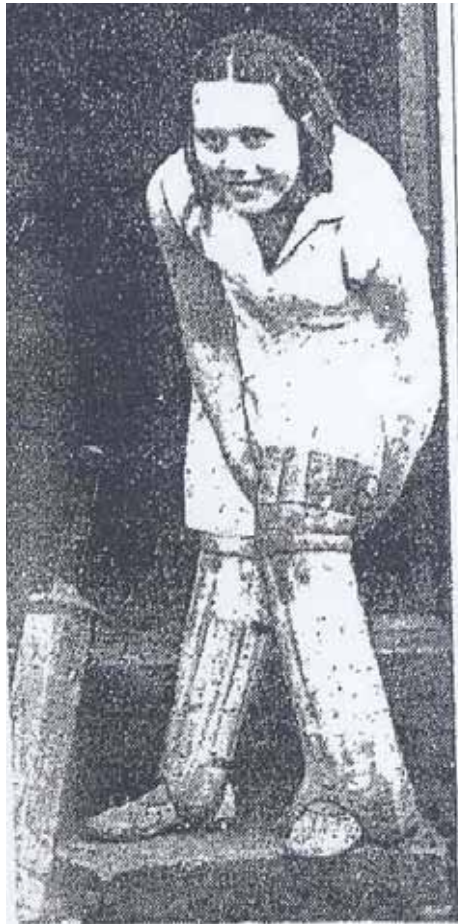
Men were seen as the natural athletes, while women, on the whole, were assigned a minor, supporting role.

Even as late as 2002, it is reported that female participation rates in sport were 56 per cent – compared with 71 per cent for men.

One of the earliest women's teams to emerge in the Halifax area was at Greetland in the 1920s, below.



In 1898 a women's XI had been formed in Brighouse, and during the 1930s the town boasted one of the few women's teams in the North.



WAS IT A CENTURY—OR A DUCK?  
—This lady cricketer, who took part in the Rastrick v. Brighouse match on Monday, does not seem at all perturbed at the prospect of facing the crowd and the bowling.

In 1935, Brighouse Ladies were crowned Yorkshire champions and in Mona Greenwood possessed one of the star performers of the era.

According to Jack Williams: *'The playing of cricket by women expanded and became more organised between the wars, but the number of women who played regularly never exceeded 5,000 and was probably always fewer than those playing tennis, golf or hockey.'*

Brighouse 2 vs Rastrick 2 at  
Rastrick Saturday July 4<sup>th</sup> 1931

Brighouse 1<sup>ST</sup> INNS 55

Brighouse 2<sup>ND</sup> INNS 70

RASTRICK 1<sup>ST</sup> INNS 59

RASTRICK 2<sup>ND</sup> INNS 54

WON

There were also key organisational landmarks in the 1920s and 1930s: the Women's Cricket Association (WCA) was formed in 1926, and ten clubs had become affiliated to it by 1927. By 1937 there were 20 county associations, and by 1938 105 clubs, 18 colleges and 85 schools had formed a link with the WCA.

Nevertheless, the phenomenon of women's cricket merits only one index reference in Derek Birley's seminal study, *A Social History of English Cricket*, and none at all in Christopher Brookes' *English Cricket: The Game and its Players through the Ages*.



BRIGHOUSE LADIES' CRICKET TEAM, who were defeated last Friday by a Bradford XI. - The return match will be played at Bradford to-night.

For the cricketing women of Brighouse, 1931 was very much 'the first season' or 'breakthrough' year. Brighouse Ladies emerged victorious in eight of their eleven fixtures that summer.

But more than that, women's cricket started to spread.

In the middle of 1931, the *Bighouse & Elland Echo* stated: ***'Ladies' cricket in the town is now well established. Tonight, the Technical School Girls are to play Rastrick New-road, at Clifton-road, and next Friday night...the Brighouse Secondary School Girls are to meet a side from Huddersfield.'***

### Brighouse Ladies' C.C.

The Brighouse Ladies' brought their first season - a close, on Saturday, by a sensational win over a team of ladies from Keighley. The match took place at Clifton-road, and the visitors, who came with a great reputation, were beaten by narrow margin of two runs, after an exciting finish. Batting first, Brighouse made 102, the top scorer being Barbara Woodcock, who carried out her bat for a well-played 31. V. Newsome, who made 23, Mona Greenwood (13), and Alice Sheard (17), were the other chief scorers. Only one of the visitors seemed able to cope with

Todmorden CC entered a team in the Lancashire Women's Cricket Federation between 1933 and 1936.

In February 1933 the club, 'resolved not to join (Lancashire) Ladies' Cricket Federation but, in view of increasing interest in ladies cricket, give notice...that we are willing to provide facilities for any ladies who are agreeable and desirous of taking up this sport.'

As it was, in 1933 Todmorden had decided to 'form a Ladies' Cricket Section'.

## Cricket.

### Ladies' Matches at Brighthouse.

#### The Knock-out Competition

The local ladies' cricket teams have been busy this week with the knock-out competition, and the two semi-finals have been decided. On Friday night last the Secondary School Old Girls easily disposed of Carr Green ladies, beating them by an innings and 28 runs, while on Tuesday, in the other semi-final, the Central School Girls scored an equally emphatic victory over the New-road ladies' team, winning by an innings and 47 runs. The final between these two big scoring sides should prove

In 1927 a Dearne Valley women's league (centring on Doncaster) was formed; 1930 witnessed the birth of the Keighley Ladies' Cricket Competition; in 1931 the Yorkshire Women's Cricket Federation was established.

And by 1932 the Yorkshire Federation had set up its own Inter-City and Towns League (Brighouse plus Bingley, Bradford, Dewsbury, Halifax, Holme Valley, Horbury, Huddersfield, Keighley, Littleborough, Liversedge, and Sowerby Bridge all entered teams).

**Lady Cricketers at  
Brighouse.**

---

**Salterhebble Team Over-  
whelmed.**

---

**Prospective Matches.**

---

A number of Brighouse ladies gave an effective answer to those critics who say women will never be able to play cricket, when the Victoria Central School Old Girls met a team of ladies from Nahums, Ltd., Salterhebble, at the Brighouse C.C. ground, on Wednesday night. The visitors did not shape very well, being twice dismissed for an aggregate of 41 runs, but the low score was a much a tribute to the skill of

During the 1930s we also encounter the Bradford Women's Evening Cricket League and the Leeds & District Women's Cricket League.

Most women's cricket in Brighouse was played under the auspices of the Women's Cricket Federation, some matches as early as 1931 and 1932.



Todmorden were lagging slightly behind.

They played a full season in the Lancashire Women's Cricket Federation in 1933, locking horns with Rochdale, Heywood, Crompton, Burnley, Littleborough, Milnrow and Facit on a home-and-away basis.

Coverage in the *Echo* was extensive.

On 24 July 1931 the paper devoted three full broadsheet columns to the women's game.

**Cricket.**

---

**Brighouse Ladies' Victory**

---

**Rastrick Rivals Beaten.**

---

On Saturday, at the Round Hill ground, Brighouse ladies played a return game with the Rastrick ladies and reversed the verdict of the previous match on Whit Saturday, winning by four wickets. Rastrick were, unfortunately, without the services of Mona Greenwood. Alice Holgate was the most successful bowler on the Brighouse side, taking eight wickets for 28 during the match, and she also scored 20 runs. The scores were:—

Rastrick.—First innings. E. Ramsden b Scansfield 5, V. Newcome b Woodcock 2, E. Henson b Sheard 12, B. Marsden b Scansfield 13, M. Southern b Holgate 4, M. Marsden c K. Halmshaw b Holgate 1, N. Marsden c Holgate b Sheard 12, B. Haley c Holgate b Sheard 0, A. Eastwood c Blackburn b Holgate 0, M. Peck b Holgate 2, F. Ch... out 2, extras... total 59.

B  
a  
t  
t  
l  
e  
T  
P  
F  
d  
w  
p  
F  
V  
o  
t  
i  
l  
a  
v  
a  
C  
N  
w  
h  
s  
c  
M  
w  
h  
F  
O  
Y  
E  
a  
w

# GIRL CRICKETERS HELP CHARITIES.

## Success of Bradford's Evening League.

The officials of the Bradford Ladies' Evening Cricket League were able to report a highly successful first season when they held their annual meeting at Cambridge House, on Monday evening last, for in addition to the excellent results from a playing point of view, it was announced that the League has been able to contribute over £50 to local charities.

"We thought we were starting on a delicate thing when we founded the League," said Mr. H. Joy, who presided in the unavoidable absence of the President (Mr. F. H. Timperley), "but it has proved more popular than we imagined. I think the amount of money we have been able to distribute has been a marvellous achievement for the

### Brighouse Ladies at Cricket.

#### Two Outside Clubs Beaten.

A large crowd on the Clifton-road ground, last Friday night, saw some bright cricket when the Secondary School Old Girls played Huddersfield Rovers. The visiting ladies had a reputation in the cricket world, having won the workshops competition at Huddersfield both last year and this season. Their reputation seemed to have overawed the Brighouse girls, who, in the first innings, were obviously nervous, neither batting nor bowling in customary form, with the result that they were 23 runs behind. At the second venture, however, the Old Girls shook off their attack of nerves and some excellent bowling by Mona Greenwood, who took six wickets for 11, and E. Ramsden, who had four for 10, was backed up by clean and alert fielding.

### Cricket.

#### Brighouse Ladies' C.C.

#### Huddersfield Twice Beaten

The Brighouse Ladies' cricket team have this week continued their triumphant career, twice beating the Huddersfield Ladies, and thus proving that the defeat of the local team on Bank Holiday Monday, at Cleckheaton, was not a true reflex of the merits of the two teams. On Friday night, at Clifton-road, the Brighouse girls almost doubled their opponents' total, while, in a return match, at Lockwood, on Wednesday night, the Huddersfield ladies were all out for 50, compared

## Brighouse Ladies' C.C.

The Brighouse Ladies' brought their first season to a close, on Saturday, by a sensational win over a team of ladies from Keighley. The match took place at Clifton-road, and the visitors, who came with a great reputation, were beaten by narrow margin of two runs, after an exciting finish. Batting first, Brighouse made 102, the top scorer being Barbara Woodcock, who carried out her bat for a well-played 31. V. Newsome, who made 23. Mona Greenwood (13), and Alice Sheard (17), were the other chief scorers. Only one of the visitors seemed able to cope with the Brighouse bowling, that was N. Smith, but she made 52 before being

Four separate stories were covered: the match against Bradford; the return fixture against Bradford; the away match at Lascelles Hall; and a scheme to standardise local women's cricket.

## Brighouse Ladies' Club.

### A SUCCESSFUL SEASON.

The Brighouse Ladies' Cricket Club have reason to be proud of their first season's record. During the summer they played 11 matches, won 8 and lost three. One of the matches in which they suffered defeat was an exhibition game at Cleckheaton, when Huddersfield Ladies beat them by six runs. In a subsequent match, Brighouse took an ample revenge, winning easily. Amongst the sides beaten was the famous Keighley team, who had not previously been defeated in inter-town games, but who lost at Brighouse in the last match of the season, by one run.

Women's cricket matches in Brighouse were also extremely well advertised in the *Echo*:

**GRAND CRICKET MATCHES**  
ON THE CLIFTON ROAD GROUND.

THIS (FRIDAY) EVENING, JULY 10. Wickets pitched at 7 o'clock.  
SEMI-FINAL ROUND. LADIES COMPETITION.  
**Secondary School Old Girls v. Carr Green Girls.**  
Admission: ADULTS 2d.; BOYS & GIRLS (under 14) 1d.

SATURDAY, JULY 11. PRIESTLEY SHIELD SECOND ROUND.  
**BRIGHOUSE 2nd v. IDLE 2nd.**  
Wickets pitched 2 o'clock.  
Admission: ADULTS 3d.; BOYS & GIRLS (under 14) 2d.

The first thing we notice in the local press is the surprise and interest that greeted the advent of women's teams.

**GRAND CRICKET MATCH**  
**BRIGHOUSE LADIES v. KEIGHLEY LADIES**  
Saturday Afternoon, September 12th  
on the Clifton Road Ground.  
WICKETS PITCHED AT 3 O'CLOCK.

On 29 May 1931, the *Echo* reported: '***A large crowd enjoyed the novel spectacle of a ladies' cricket match on the Rastrick ground last Monday morning, when teams representing Rastrick and Brighouse met in a friendly game.***'

The novelty of women's cricket was reflected in the size of attendances. Women's county games could attract crowds of up to 8,000.

The May fixture between Brighouse and Rastrick ladies was watched by a gathering of 1,000 - small in comparison to the county crowds mentioned above (and to the crowds that men's games attracted), but mightily impressive for a match between women's teams from two small towns.

**Grand CRICKET MATCHES**  
**ON THE CLIFTON ROAD GROUND,**  
THIS EVENING (JUNE 19th) AT 7 O'CLOCK. LADIES' MATCH.—  
TECHNICAL SCHOOL GIRLS v. NEW ROAD GIRLS.  
Admission: Adults 2d., Boys and Girls, 1d.

SATURDAY AFTERNOON (JUNE 20th) AT 2.30 p.m.  
BRADFORD LEAGUE MATCH. BRIGHOUSE 2nd v. BINGLEY 2nd.  
Admission: Adults 2d., Boys and Girls, 1d.

WEDNESDAY EVENING (JUNE 24th) AT 7 O'CLOCK. LADIES' MATCH.—  
CARR GREEN GIRLS v. HOVE EDGE GIRLS.  
Admission: Adults 2d., Boys and Girls, 1d.  
Roll up to watch the fair sex use the willow.

When Victoria Central School Old Girls played Nahums, a Salterhebble cotton spinning factory, the *Echo* reported that there was a 'large crowd' and that everyone was 'treated to a spectacular display'.

By contrast, when Brighouse visited Lascelles Hall in July 1931, ***'The lack of "atmosphere" seemed to affect the Brighouse side somewhat, and compared with the enthusiasm which their matches arouse at home, they found the...Hall spectators almost unnervingly quiet.'***



LADIES AT CRICKET.—The team, representing Brighouse Central School Old Girls, who beat Nahum's, Salterhebble.

Brighouse Ladies were the number-one team in the area but other teams also emerged.

They were at Rastrick, Elland, Brighouse & District, plus a host of schoolgirl sides including Technical School Girls, Rastrick New Road Girls, Carr Green Girls, Hove Edge Girls, Brighouse Secondary School Girls and Victoria Central School Old Girls.

So, women's cricket in this period was essentially middle-class and upper-class.

We also know that most of the players were young, single girls. When the *Echo* listed the sides for the Rastrick-Brighouse game in early July, they did so like this:



Rastrick – Misses E.Ramsden (captain),  
E.Henson, M.Southern, B.Marsden,  
V.Newsoms, F.Clegg, A.Eastwood,  
M.Marsden, N.Marsden, M.Peck, B.Haley.  
Reserves: M.Hedley and D.Greenwood

Brighouse – Misses M.Stansfield (captain),  
A.Holgate, A.Sheard, M.Carling, K.Halmshaw,  
B.Woodcock, E.Bates, M.Halmshaw,  
M.Blackburn, W.Green, E.Ellis Reserves:  
K.Drake and E.Owen

In Todmorden a male cricketer – J. Ratcliff – was ***‘asked to coach the lady members’*** at a committee meeting on 3 April 1933. Later that month, two ‘scratch’ matches were arranged for the club’s female players.



### **Todmorden’s ground in the 1920s**

In May the club decided to give ***‘half...the “gate” at the Crompton match on July 28th to Lancashire Women’s Federation’***, and by June it was resolved that the ***‘fares of 4 lady cricketers in the trial match at Burnley be paid by the club’***.

The club’s female cricketers were also offered use of net facilities and the ground. Thus, Todmorden’s ‘willingness’ to help its female cricketers had evolved into enthusiasm.

The beginning of women's cricket was greeted not just as a 'novelty'. It also heralded an outpouring of gender stereotypes.

It could be argued that local newspapers were guilty of slightly looking down on women's cricket. In Brighouse there were many examples of this.



The *Echo's* report on the special challenge match between Rastrick Ladies and Brighouse Ladies in May 1931 was accompanied by the headline, FAIR CRICKETERS AT RASTRICK.

The phrase 'fair cricketers' was used again within the report. A month later, an advert for the match between Carr Green Girls and Hove Edge Girls finished with the words: ***'Roll up to watch the fair sex use the willow'***.



A GOOD RETURN.—A fielder in the ladies' cricket match at Rastrick, caught in graceful pose.

In the same kind of vein, a caption to an *Echo* photograph read: ***'A Good Return - A fielder in the ladies' cricket match at Rastrick caught in graceful pose'***.

At times, the tone of comments emanating from those watching was patronising.

When New Road Ladies played the Technical School, the headline in the Echo was: ENTHUSIASTIC LADY CRICKETERS - BRISK HITTING AT CLIFTON-ROAD GROUND.



Similarly, when Rastrick played Brighouse, the *Echo* reported that: ***'The ladies entered enthusiastically into the game, and some of them displayed no little skill.'***

'Enthusiastic' is the give-away word. Would it really have been used to describe the efforts of the Brighouse men?

The paper also devoted a number of 'editorials' to issues surrounding women's cricket – a sure sign of the game's growing strength and importance.

### A SIGN OF THE TIMES.

Now that the ladies have, in a large measure, secured that equality of opportunity for which they used to cry out, will they carry the thing to its logical conclusion and accept equality of responsibility? At a meeting, this week, when the question of charges for admission to the final stages of the local Merit Bowling Competition was being discussed, one delegate suggested that the ladies and gentlemen should both pay the same price. He was in a minority, the larger section of the delegates preferring to follow the old practice of admitting ladies 'at half price, though one sympathiser with the suggestion did remark that, "of course, if the ladies wanted to play a manly part they could pay full price." Is this incident a sign of the times and shall we soon find that the ladies, having been given equal opportunities in all sports and games, will be expected to accept equal responsibilities for providing the funds with which the sport is carried on. It does seem

### THE SPORTING SPIRIT!

The Brighouse Ladies' cricket team, who have been establishing a reputation for themselves lately, have this week had an experience of how soon an un-sportsmanlike spirit can creep into what is, after all, only a game. The local ladies were anxious to arrange a match with the more experienced Bradford Ladies' team, believing they could put up a good show and that the visit of a side from our more influential neighbour would be a great attraction and might be the means of helping some deserving Brighouse organisation. Accordingly they got into touch with the secretary of the Bradford club. To their surprise, the first question asked was not "What sort of a match would you like?" but "What sort of a match would you like?"

### WHERE WOMEN DO NOT VENTURE.

It has been left to Mr. John Ayrton, president of the Brighouse Rangers' Football Club, to point out the one field of sport in which women have not challenged the men. Women cricket teams are all the vogue just now; there were Association football teams for women many years ago; up to the present, however, the ladies have not ventured into the robust activities of the Rugby football game. Probably even the keenest advocates of sport for women recognise that the tackle and scrum game is entirely a man's sport, and no one wants to see ladies engaged in it. According to some of the speakers at Monday night's meeting it is not only the ladies who are afraid of the game; many of the young men and youths of to-day were alleged to be "finicky" and to object to the prospect of being

### A TRIUMPH FOR THE LADIES.

The lady cricketers of Brighouse have quickly won a definite place in the life of the town. Next year they are likely to gain an added status, for it was announced on Monday night that there is every prospect that, next summer, the Brighouse Cricket Club will run a ladies' section and that lady playing members will be given facilities for practice, coaching, and assistance in arranging fixtures with representatives of other towns. This official recognition cannot but be helpful, though doubtless the ladies would have gone on quite well without it. As it is, after only about a couple of months, they have gained civic recognition, and at their match at Bradford to-night they will

Women's cricket was growing and becoming a significant spectator sport in its own right. As a result, it began to produce its own stars: Margaret Lockwood, England wicketkeeper, who received invitations to 'guest' for various teams; Mrs L. Wilson, of Keighley C.C., who took hat-tricks in successive matches; and, in Brighouse, Mona Greenwood.

The averages for the season are:

BATTING.

	Times not		Runs.	Av.
	Inn.	out.		
Miss V. Newsome ..	9	2	152	21.7
Miss A. Sheard ....	12	2	189	15.7
Miss B. Woodcock ..	11	3	102	12.7
Miss E. Ellis .....	4	1	35	11.6
Miss M. Greenwood .	10	0	113	15.7
Miss P. Brearley ....	4	0	45	11.2
Miss B. Marsden ....	5	2	29	9.6
Miss M. Marsden ..	5	2	29	9.6
Miss E. Henson .....	11	0	76	6.9
Miss M. Lane .....	10	3	46	6.5
Miss A. Holgate .....	11	0	49	4.4
Miss M. Stansfield ..	8	0	31	3.9
Miss E. Ramsden ....	8	1	11	1.5

BOWLING.

	O.	R.	W.	Aver.
Miss P. Brearley ....	9	18	7	2.6
Miss M. Stansfield .	10	29	5	5.8
Miss M. Greenwood ..	69	204	28	7.3
Miss A. Holgate ....	29	90	12	7.5
Miss A. Sheard ....	93	243	26	8.5
Miss E. Henson ....	50	151	13	11.6

It was the summer of 1931 that saw the emergence of Mona Greenwood as captain of the Brighouse team, and its top performer.

In 1935 the Brighouse women's side was crowned Yorkshire champions. Greenwood also represented England Women in two 'Tests' against Australia in 1937.

**JOYS OF SEEING  
DON BRADMAN  
IN BATTING FORM  
A WOMAN'S VIEW OF THE  
TEST MATCH.**

**Many Runs Should Have Been  
Prevented.**

By **MONA M. GREENWOOD**  
(Yorkshire Women's Cricket Captain).

**I**f anybody thinks that I was disappointed with the play on Saturday in the Test match at Leeds they are mistaken.

Perhaps if I had watched the match through the eyes of those hundreds—possibly thousands—of women who made most colourful the record crowd which ringed the enclosure, I would have been tired of the play long before the finish.

As a result of her success, Greenwood became a celebrity. In 1934 her views on watching Don Bradman, the legendary Australian batsman, were sought by the media when he appeared in the Headingley Test Match of that year.

Ladies teams were springing up all over the place, in nearby towns and local schools. The following teams are mentioned in the *Echo* in 1931: Huddersfield, Lascelles Hall, Holmfirth, Bradford, Keighley and Nahums Ltd.

## LADIES' CRICKET MATCH.

### First at Elland.

#### A GOOD HOME VICTORY.

Elland staged its first ladies' cricket match on Tuesday, and so successful did it prove that there is every possibility of it being made an annual event. The game was arranged by the Elland Chamber of Trade, in association with another cricket game between the Holmfirth Chamber of Trade in the afternoon, and took place on the Elland cricket field. Earlier in the season, Elland visited Holmfirth, where the cricket team was there defeated, but on Tuesday Elland secured revenge for they won by a large margin.

The ladies' event, which followed after tea, was notable for the fact that Miss Moorhouse, after three overs, in

On 28 August 1931, under the heading LADIES' CRICKET MATCH - FIRST AT ELLAND - A GOOD HOME VICTORY, the *Echo* reported: ***'Elland staged its first ladies' cricket match on Tuesday, and so successful did it prove that there is every possibility of it being made an annual event.'***

We also know that in 1938, the opening of a new 'tea tent' at Illingworth St. Mary's was marked by a special cricket match.



*Ladies Team of 1938 v. Gentlemen to mark the opening of the new Refreshment Hut.*

*Standing (L to R): Winnie Sykes, Clara E. Allen, Gladys Proctor, Norah Walker, Dorothy Northrop, Mary Briggs, Elsie Staff, Phyllis Pickles, Mary Campbell. Seated: Marjorie Moor, Marjorie Hirst, Ethel Morley, Mabel Hirst, Mary Campbell.*

The opposing teams were the 'Ladies' and 'Gentlemen of the club', with ***'the male element being restricted to retired cricketers'***.

Thereafter, in the decades following, an array of other women's teams emerged in the area, including this one at Blackley in 1969:



Women's cricket has been on the rise in recent years with the national side reaching the semi-finals of the 2005 World Cup and recording an Ashes series win over Australia.

The England and Wales Cricket Board (ECB) reports that there has been a 33 per cent increase in the number of new women's cricket sides since 2003 - and there are now more than two million girls actively participating in the game nationwide.



Here in Yorkshire various coaching and training initiatives have been set up for young female cricketers.





The main difference between men and women's cricket is the difference in strength between the two genders.

In women's cricket the fastest ball will be about 65-70 miles per hour – equivalent to a medium-pacer in the men's game - while sixes are a very rare occurrence.

Test matches are only played over four days and one-day run rates are typically about four an over as opposed to the men's version where run rates can be as high as six or seven an over throughout an innings.

Southowram also have their star female cricketer, Sarah Williamson.



# SARAH MAKES HISTORY

WHARFEDALE and Airedale Observer advertising sales representative Sarah Williamson made cricketing history for a second time on Saturday.

She became the first woman to play in the Halifax Cricket League when she turned out for her home village Southowram against Blacklev.

## Bowled over? Not this maiden!

I AM 25 years of age and so far in my life I have made history twice. But I am not famous.

The first occasion was on April 25, 1987 when I became the first woman cricketer to play in the West Riding Cricket League.

The second time I made history was last Saturday when I became the first woman to play cricket in the Halifax League, an experience I would like to share.

Women's cricket has been played at Scott Street, Walsden.



And Sowerby Bridge Church Institute (SBCI) CC boasts a flourishing junior set-up, including lots of enthusiastic girl cricketers.

## CLUB'S LOTTERY BOOST SET TO BOWL MAIDENS OVER!

A CALDERDALE cricket club has won a National Lottery grant of more than £160,000 to develop youth and women's cricket.

Sowerby Bridge Church Institute Cricket Club, Friendly, has been awarded £160,985 from the lottery sports fund for a new pavilion, plus three artificial all-weather cricket wickets including two for practice.

Project manager Mr Stewart Bates, of chartered surveyors Charnock Bates Associates, Commercial Street, Halifax, said: "We are absolutely delighted."

He said the club had aimed to develop junior cricket for seven years following a decline in the amount of cricket played at schools. The club had up to 40 reg-

ular junior players and wanted to develop that further.

Sowerby Bridge High School was one of the supporters of the scheme and pupils would be able to use the club, which will include new changing rooms, through the summer.

"The pitch is used by the Halifax, which has also given its support to the scheme," said Mr Bates.

Other backers included The Peacock Football Club and Sowerby Bridge "88" Cycling Club.

"The key really is opening the club up to younger teams and having more coaching for young people at the club," he said.

There will also be a multi-activ-

ity area with space for table-tennis and pool. Teams from those sports will be entered into local leagues.

The development of women's cricket is another aim for the club.

"There is a need for ladies' cricket teams because a ladies' cricket league could be formed in Halifax. There is a demand for it. The new facilities at the club will make it more available to females," said Mr Bates.

The club has already received a £30,000 grant from the Foundation for Sport and the Arts towards the total £226,978 cost.

"We are hoping to commence development within the next three to six months," said Mr Bates.

The scheme could be finished by autumn 1998.

## OPENING THEIR INNINGS

A COACHING session for female cricketers was held at the ground of Halifax League side SBCI at the second attempt.

A fortnight ago 10 turned up for coaching from Tony Bowry of the Yorkshire Cricket Board but the session was hit by torrential rain.

On Friday five youngsters were given coaching at the ground.

First team captain Martin Summerscales said: "It was a bit disappointing after the initial response but the youngsters are being invited to take part in our usual Friday night junior practice sessions.

"We hope to run a similar course later in the summer and we hope that we can attract more to it."

Pictured at the coaching session are, from the left, Joanne Sanderson (11), Leanne Simpson (13) and Sian Smith (11).



Wainstalls are another Calderdale club that – before their demise in 2005 - tried to encourage women’s cricket as part of their efforts to broaden the appeal of the sport.





Calderdale also boasts a female umpire, Elise Sykes.

She had been involved in cricket 31 years – as a tea lady primarily - when she took up umpiring in 1991. Her husband and son were also involved in cricket.



She now says:

***It wasn't really that hostile at first. The men cricketers just used to say: Oh God it's her again! But they've changed now and they've got used to me. It just took the men a bit of time to get used to a female umpire.***

***I now do 26 games a year – league, cup and juniors. There are no other umpires in the Halifax League but it's actually not that unusual to see female umpires in the Bradford League.***