

HEART AND SOUL

FUNDRAISING & LADIES COMMITTEES

In the post-war years in particular, it was quite fashionable for local cubs to have their own 'sub-group' of willing female members. More often than not, this sub-group would be known as the 'Ladies Committee'.



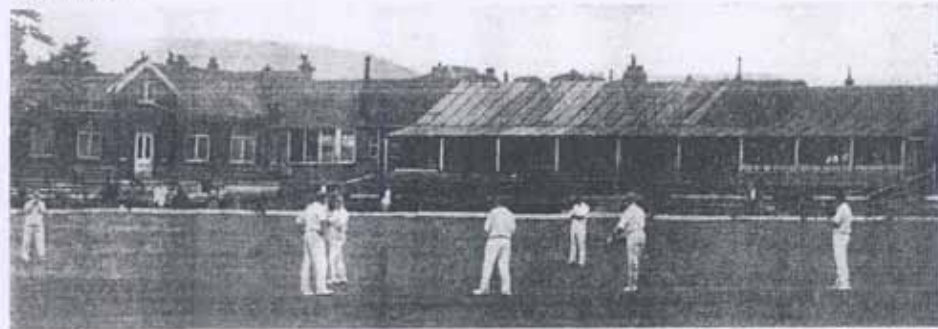
Mrs. Crossland, Mrs. Sutcliffe (secretary), Mrs. Rawlinson (chairman),
Mrs. Sykes, (treasurer), Mrs. Berry

1960, Elland CC



Cricket might be a man's game, but there is still a place for the women in the general organisation programme. For instance, these three smiling ladies spend a lot of spare time helping with meals. They are Mrs. H. Shaw (left), Mrs. C. Nutton (centre) and Mrs. D. Sutcliffe.

WOMEN ARE HELPING THIS CLUB AT ELLAND TO KEEP ITS PLACE



THE local cricket season has now drawn to a close and most clubs are sitting back on their laurels or disappointments until the new campaign opens next spring. But not all are prepared to forget about the game during the winter months.

Elland Cricket Club is just one such organisation. Hullen Edge officials are likely to be busy between now and the light nights making important plans to whip up enthusiasm for a season which could be a vital one in the club's history.

They have already signed a professional—he is said to be probably the highest-paid "pro" in Yorkshire league cricket—and pavilion improvements are due to start soon. Other crowd-catching projects are under discussion.

All these moves are being introduced in a bid to halt a slide in local cricket interest. Elland's fortunes seem to have slipped somewhat in recent years and though the club is in no difficulties a go-ahead programme is evidently called for.

Older members can still remember the triumphs of yesteryear and they are keen to see them repeated soon. Better, brighter cricket, more spectators and lots of support from venue people could all help to put the club back on top.

Sports centre

Abraham's life services have been obtained in face of tough competition from

runs, his was the top all-round performance in club cricket over the border.

noon watching a game with interest was demonstrated this season when Elland

Another six-a-side event will be held next season there will be a professional's match made and it is also

BY A SPECIAL CORRESPONDENT

A major rescue operation's their answer to the cricket slump

AND IT'S UNDER WAY



view—and the social side is an important aspect of any club—the pavilion improvements should be a great help. It is expected that work will start later this year and will involve the building of a new

TOP: A game in progress at Hullen Edge. ABOVE: In the clubhouse, these women who are closely connected with the club.

Left to right are Mrs. A. Walker, Mrs. C. Fisher and Mrs. N. Berry.

By 1964 the Elland CC Ladies Committee was playing a major role

Ladies' Committee hand over £50



A group of members of the ladies' committee of Mytholmroyd Methodist Cricket Club who handed over £50 to club funds at the annual dinner last Tuesday evening

1963

In the 1960s the Ladies Committee was also raising money – this cutting comes from 1963



An undated photo of the Old Town CC Ladies Committee



More women members at Old Town CC - undated

Where a club had a Ladies Committee, it was usually semi-autonomous and devoted to fundraising and improving the wellbeing of the club.

S.B.C.I. C.C. 1972

The Annual General Meeting of the Ladies Section of S.B.C.I. Cricket Club was held on the 12th January, 72 at the home of Mrs. Jowett. It was well attended and an enjoyable social evening was combined with the more formal task of arranging a programme of events for the year. Mrs. Jowett provided sherry and cakes, which I am sure, was appreciated by all. The officials elected were: - Mrs. Birkby - Treasurer. Mrs. ~~Barlow~~ ^{Jowett} - Chairman. Mrs. Sutcliffe - Secretary. Venues for all the meetings were arranged.



It would organise its own events (jumble sales, clothes evenings etc), pay in the takings to its own bank account, and then donate money back to the club as and when it was needed for specific purposes.

The hey-day of the Ladies Committee was, arguably, the period through from the 1950s to the 1970s.

The pavillion was duly painted and cleaned by the Ladies. Several favourable comments were received. At least our paint had dried before the first match. This was not the case in the changing rooms (Which the men painted) as no doubt some of you would be aware, faced with the job of removing paint from the seat of your husband's cricket flannels.

SBCI, 1972

After the holiday break our next meeting was held at Mrs. Gawn's. 12 members were present. A welcome was given to Mrs. Vivienne Mallinson who was with us for the first time. It was decided that more ladies could attend the Christmas Supper if this was held on the second Tuesday in December, instead of Wednesday. This was booked for 8.30 p.m. on the 12th December at the Dusty Miller, Mytholmroyd. Ladies not present were to be contacted to see if they could come that evening. A Jumble Sale was also discussed and it was left to Mrs. Birkby to try and book a convenient Friday evening. The question of giving a cheque to the Men's Section at the Annual Dinner Dance was raised but no decision was made. Also discussed was the need for new crockery and teapot but it was decided that it would be better to leave this until the start of the new season. The price of plastic chairs was to be investigated, as it was felt these to be of necessity in the tea-room.



SBCI, 1972

At SBCI there is also evidence of autumn fayres and jumbles sales, with the ladies group serving both the church (SBCI was linked to Christ Church, Sowerby Bridge) and the cricket club.



A meeting was held on 13th March '68, 13 members being present.
Mrs Buckley gave information re Autumn Fayre for the church. It has been decided that we give a bottle stall on that day i.e. 12th Oct '68. This to commence at 3 PM.
Ladies agreed to clean the Pavilion on 20th & 21st April.

1968



at

A Meeting was held at Mrs Thomas's 12 attended
The date for the Jumble Sale was
settled Nov 6th. It was agreed to present
A cheque for £50 to the men at the
Annual Dinner.
We also agreed to run another bottle stall
at the Autumn Fair for the New School, Nov 21st.
The next months meeting was arranged for
Mrs Jewetts
Our thanks to Mrs Thomas for her hospitality.
JYH in Bank
Mrs Greenwood - Mrs Jyo - Mrs Wilboneth
Send their apologies

1970

Ladies committees would be well organised and members would pay annual subscriptions. This is confirmed by these two documents from Old Town CC in 1956.

SEASON 1956

Subscriptions	Ladies		
" — Mrs E N Carrington	2	6	✓
" — Miss M Pollard	2	6	✓
" — S Butler	2	6	✓
" — Mrs S Williams	2	6	✓
" — Mrs J. Lingard	2	6	✓
" — Mrs N Greenwood	2	6	✓
" — Mrs Macfarland	2	6	✓
" — Mrs R Clarke	2	6	✓
" — Mrs N Butterworth	2	6	✓
" — Mrs Taylor	2	6	✓
" — Mrs D Greenwood	2	6	✓



SEASON 1956

Subscriptions

Ladies

Miss F Newbitt	2	6	✓
Miss E Newbitt	2	6	✓
Mrs Parker <i>Bookman</i>	2	6	✓
Mrs Speight	2	6	✓
Mrs Cardell	2	6	✓
Mrs Birkett	2	6	✓

*Audited
7th Nov. 1956
R. Ashworth*

15 0 -

2 15 0 ✓

~~£3 10 0~~



These balance sheets indicate the scale of ladies section contributions at two Calderdale clubs.

LADIES SECTION—Cash Account for the year ended 30th September, 1964.							
RECEIPTS.		PAYMENTS.					
	£	s.	d.				
Cash in Hand, 1st October, 1963	26	19	4	Donation to Club	220	0	0
Cash in Bank, 1st October, 1963	47	7	10	Cash in Hand, 30th September, 1964	5	4	1
Profit on Whist Drive and Dance	7	3	10	Cash in Bank, 30th September, 1964	7	12	6
Profit on Catering :							
Winter	41	4	9				
Summer	96	12	8				
Receipts from Jumble Sale	11	11	0				
Bank Interest	1	17	2				
	<u>£232</u>	<u>16</u>	<u>7</u>				
					<u>£232</u>	<u>16</u>	<u>7</u>

Elland CC, 1964

	1968		1967	
RECEIPTS	£	s. d.	£	s. d.
Cash in Hand 1-1-67	—	—	46	9 9
Cash in Hand 1-1-68	76	3 11		
Cash in Bank 1-1-67	—	—	363	3 3
Cash in Bank 1-1-68	443	11 3		
Ground Improvement Fund :—				
Winter 1967-68	118	11 6		
Summer 1968	145	14 0	158	14 11
Honorary Subscriptions	15	15 0	14	7 6
Members' Subscriptions	22	5 0	16	17 6
Members' Subscriptions under 16	2	5 0		19 0
Grant from Ladies' Committee	20	0 0	20	0 0
Interest on War Stock	3	10 0	3	10 0
Sale of Paper	34	13 0	27	12 0



Stones CC, 1968

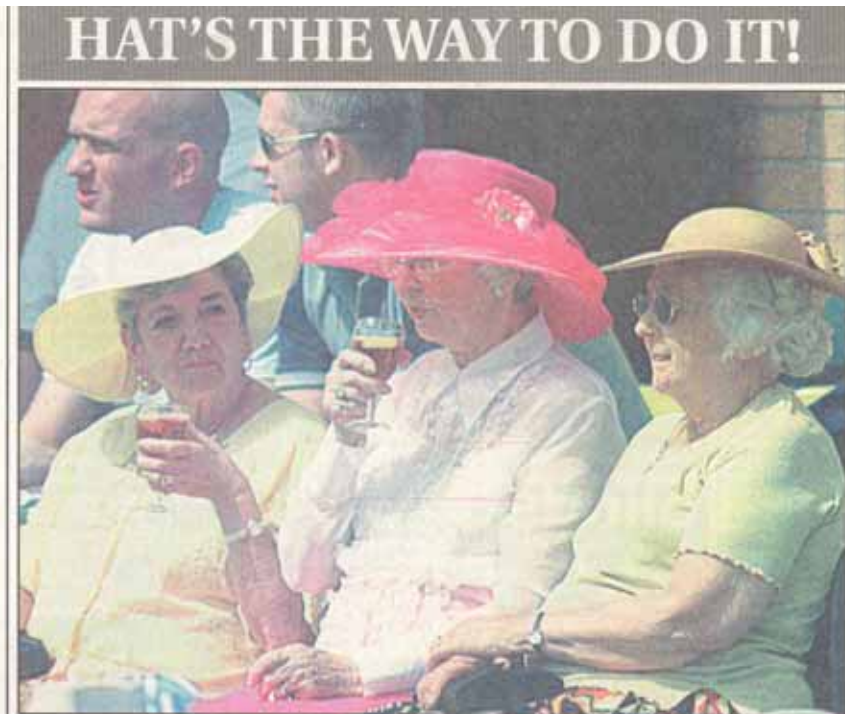
REVENUE ACCOUNTS FOR YEAR ENDED 31st DECEMBER 1974

	Cash	Bank		Cash	Bank
Cash in Hand	162-53		Rates and Water Charges	38-60	
Cash in Bank		222-13	Insurance :—		
Ground Improvement Fund	142-80		Players		11-25
Honorary Subscriptions	24-80		Fire	16-60	
Members Subscriptions	36-50	3-00	Trophies	2-00	
Junior Subscriptions	6-00		Printing	13-50	
Grant from Ladies Committee	35-00		Umpires Fees	43-75	
Interest from War Stock		3-50	Tackle Account	50-08	
Sale of Paper		129-08	Grant - Use of Sunday School	1-70	
Profit on Sale of Cigarettes	0-65		Scorers Expenses	16-00	
Gate Receipts	6-17		Mower Account	8-67	
Profit on Annual Dinner	4-70		Repairs to Ground & Pavilion	33-74	
Bank Interest		24-76	Prizes 1973		12-62
Sunday Receipts	8-13	15-40	Subscriptions - League & Cup	12-00	
Sale of Handbooks	1-00		Presentation Trophies	16-80	
Profit on Xmas Draw	80-91		Treasurers Expenses	1-50	
Profit on Disco	42-11		Secretary's Expenses	5-00	
Cash to Bank - Central		107-40	Sundry Expenses	1-00	
Dance & Buffet Rishworth School			Cash to Bank - Contra	107-40	
Dance & Buffet Ripponden			Donation - K. Taylor	1-00	
			Provision of New Car Park		
			Acquisition of Land	100-00	
			Legal Expenses		29-65
			Cash in Hand	81-96	
			Cash in Bank		448-28
	<u>£551-30</u>	<u>£505-27</u>		<u>£551-30</u>	<u>£505-27</u>

Audited and found correct :: 28.1.75
 GEORGE EASTWOOD R. GALLOWAY

Stones CC, 1974

And ladies sections are still flourishing, as this recent cutting relating to Walsden CC demonstrates:



Relaxing Ascot style at Scott Street

PICTURE BY DAVID EVANS

WALSDEN Cricket Club chairman Allan Stuttard took his hat off to the club's ladies' section after a successful event last weekend.

Sunday was not the best of days on the field for Walsden's first eleven, who lost to Littleborough, but the Ladies' Day chiefly organised by Bev Rushton

and Nicola Gale proved to be a great success.

Proving Ascot isn't the only event where the fairer sex can parade their brightest headgear, Scott Street was packed with a fine selection of chapeaus being sported in the crowd.

The match formed only part of the day's entertain-

ment, said the chairman.

Explained Allan: "The ladies had plenty of entertainment laid on, including a buffet, a glass of Pimms while they watched the game, wine with their meal and a cabaret at night.

"It went down very well and was a great success."