

THE SAVILE GROUND: THEN AND NOW



The Savile Ground in 1910 (photo: B. Haigh). At this point in time the
sightscreens were large white sheets



The grandiose pavilion



Probably a county match – note the amount of spectators in attendance and the way in which they are dressed





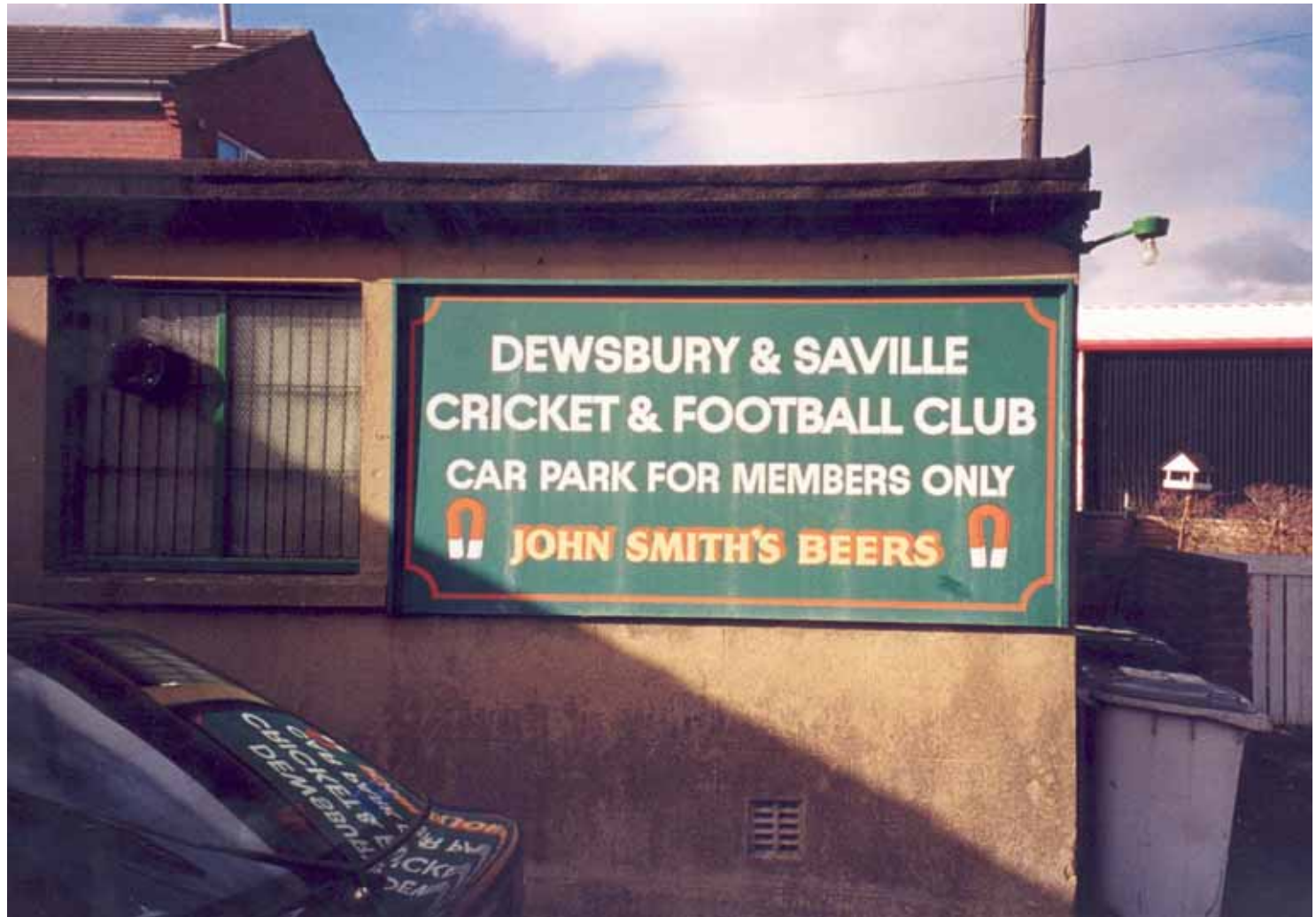
We would be very interested if anyone could help us date these photographs. Call Dr Peter Davies on 01484 472405



The turnstiles – again, probably at a county match







The scene today







Entrance to
the Club House

DEWSBURY & SAVILLE
CRICKET & FOOTBALL CLUB
CAR PARK FOR MEMBERS ONLY
JOHN SMITH'S BEERS





Looking in through the gate of the Working Men's Bowling Club



