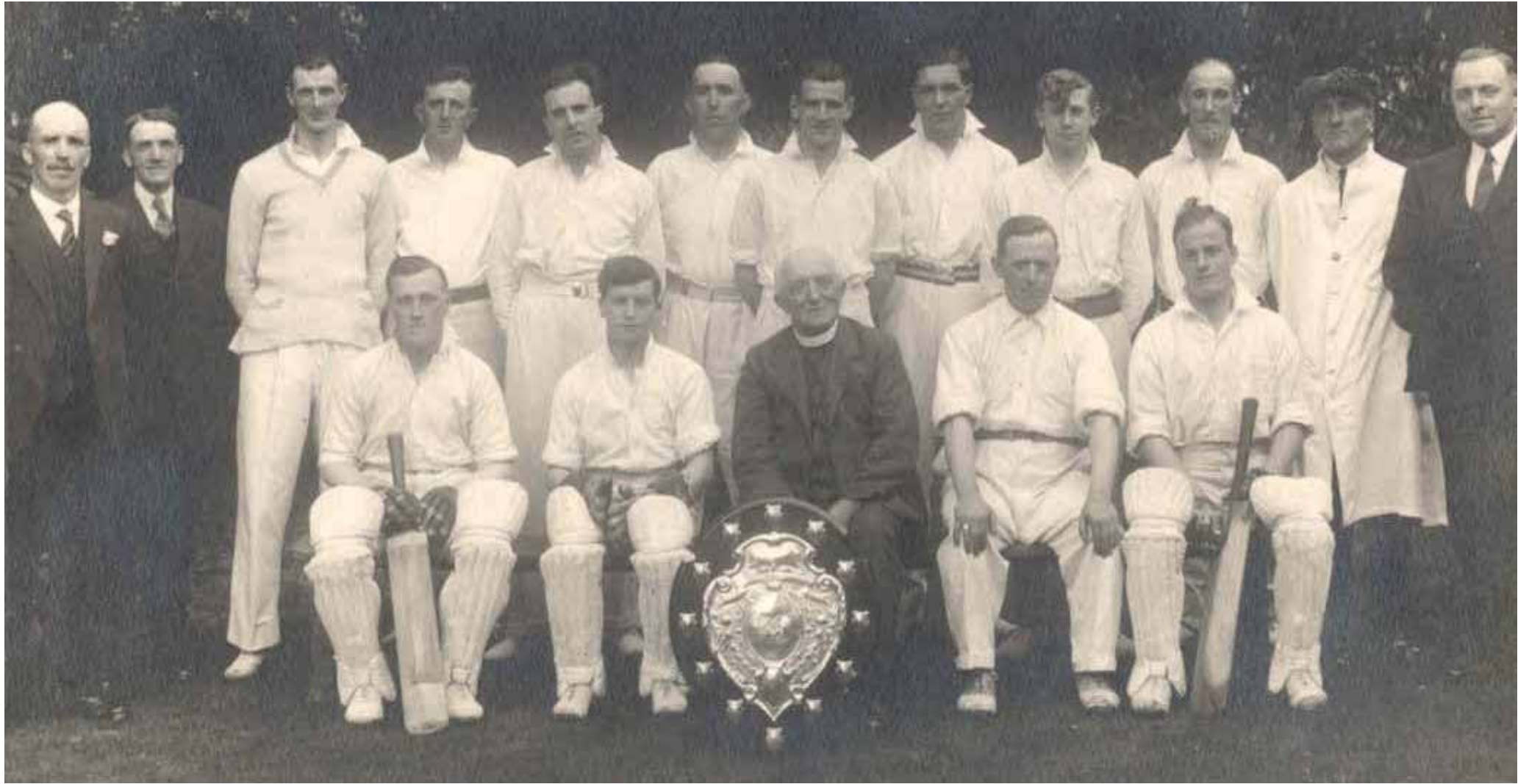


Rowley Hill CC

Undated Team Photo:



1922 Huddersfield Central League:

FIKTURES FOR TO-DAY.	
HUDDERSFIELD AND DISTRICT LEAGUE.	
Almondbury	v. Dalton.
Lockwood	v. Armitage Bridge.
Kirkburton	v. Bradley Mills.
Huddersfield	v. Broad Oak.
Friargate	v. Stathwaite.
Kirkheaton	v. Golear.
Meitham Mills	v. Holmfirth.
Honley	v. Maltham.
Paddock	v. Lascolles Hall.
Marsden	v. Lintthwaite.
CENTRAL LEAGUE.	
Thongsbridge	v. Cartworth Moor.
Shepley	v. Clayton West.
Nortonthorpe	v. Cumberworth United.
Laymoor	v. Denby Dale.
Hall Bower	v. Skelmanthorpe.
Hepworth	v. Homebridge.
Rowley Hill	v. Thurstonland.
Upper Cumberworth	v. Scholes.
Shefley	open date.
ASSOCIATION.—Lumb Cup.	
Almondbury Wesleyans	v. Honley Wesleyans.
Milton Church	v. Helms.
Pole Moor	v. Rastrick New Road.
Dalton St. Paul's	v. Oakes Baptists.
Cowcliffe Church	v. Y.M.C.A.
Second Division.	
Outlane	v. Almondbury Wesleyans.
Y.M.C.A.	v. Cowcliffe Church.
Honley Wesleyans	v. Blackley.
Oakes Baptist	v. Milton Church.
ORDINARY.	
Primrose Hill	v. Drighlington.