

EARLY YEARS

CHURCH LINK?

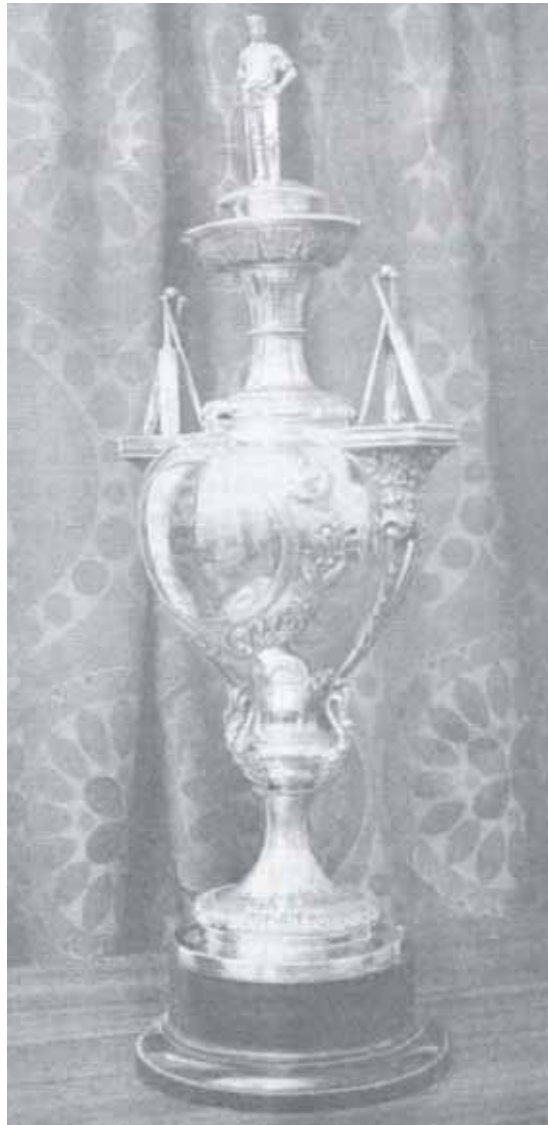
ORIGINS

The origins of Staincliffe Cricket Club are slightly hazy, but it is possible – perhaps probable – that there was a link between the Club and the local parish church.



UP FOR THE CUP!

1883 - HEAVY WOOLLEN DEBUT



The origins of Staincliffe Cricket Club are unclear.

However, we do know that they were one of the clubs that participated in the first ever Heavy Woollen Cup competition in 1883, playing Dewsbury Moor United in the first round.

| | |
|-------------------------|-------------------------------|
| Staincliffe | v. Dewsbury Moor Utd |
| Bruntcliffe | v. Gildersome |
| Upper Batley | v. Heckmondwike |
| Hunsworth Mills | v. Adwalton Queen Elizabeth |
| Thornhill | v. West End Cleckheaton |
| Dewsbury Utd Clerks | v. Healey Lily of the Village |
| Birstall Young England | v. Ossett |
| Morley Nelson | v. Spennings Victoria |
| Roberttown All Saints | v. Scholes Albert Mills |
| Dewsbury & Savile a bye | |

In this period only clubs located within a six-mile radius of Batley Town Hall could enter the competition.

This distance was later extended to nine miles in 1895, 12 miles in 1901, 15 miles in 1929, and finally 18 miles in 2000.

In the second round of the competition Staincliffe recorded a convincing win against Cleckheaton-based Hunsworth Mills.

HEAVY WOOLLEN DISTRICT CHALLENGE CUP.

SECOND TIES.

HUNSWORTH MILLS v. STAINCLIFFE.

Played at Hunsworth. Score:—

HUNSWORTH.

| | |
|------------------------------------|-----------|
| J. W. Taylor, b Clarkson | 1 |
| J. Savory, c Clegg b Clarkson | 12 |
| R. Holmes, b Clarkson | 0 |
| H. Savory, b Clarkson | 14 |
| J. Hodgson, b Pickering | 6 |
| H. Day, c Crawshaw b Pickering | 1 |
| H. Blakelock, b Clough | 13 |
| J. Priestley, c Norton b Wormald | 21 |
| W. H. Stead, c Pickering b Wormald | 7 |
| P. Oxley, not out | 8 |
| J. Bentley, at Hirst b Clough | 6 |
| Extras | 15 |
| Total | 98 |

STAINCLIFFE.

| | |
|---------------------------------------|------------|
| J. Charleworth, at Day b Savory | 0 |
| R. Hirst, run out | 45 |
| R. Clarkson, not out | 46 |
| P. Rhodes, c Taylor b Blakelock | 1 |
| C. Pickering, c H. Savory b Blakelock | 2 |
| J. Wormald, not out | 4 |
| Extras | 3 |
| Total for 4 wks. | 100 |

However, they were knocked out at the next stage of the competition after a 5-wicket defeat at the hands of Heckmondwike.



GOING FOR A SONG

1891 – MUSICAL FAME

In 1891 Lascelles Hall came out victorious in the Heavy Woollen Cup, beating Ossett in the final.



**Lascelles Hall team and officials for the
1891 Heavy Woollen Cup triumph**

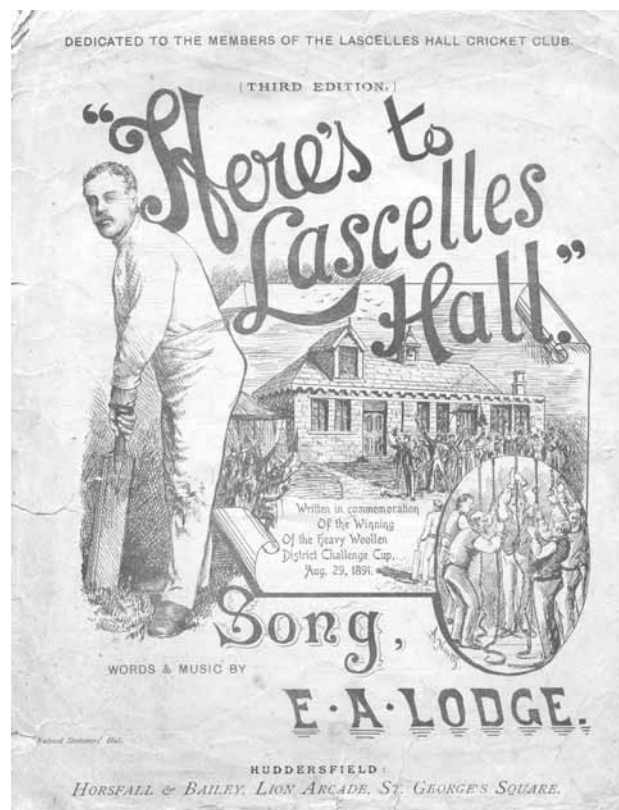
The president of the Heavy Woollen League consoled Ossett, stating that they had been beaten by a club that had beaten the best in England. A voice from the crowd retorted: ***'They are old men and cripples'***.



A noted local composer, E.A. Lodge, produced a song to commemorate the Lascelles Hall victory.

The words are a fascinating testament to a golden era in local cricket, an era that was coming to an end.

And guess who were vanquished by Lascelles Hall in the second? Yes, Staincliffe! See Lines 3 and 4 of the first verse.



HERE'S TO LASCELLES HALL



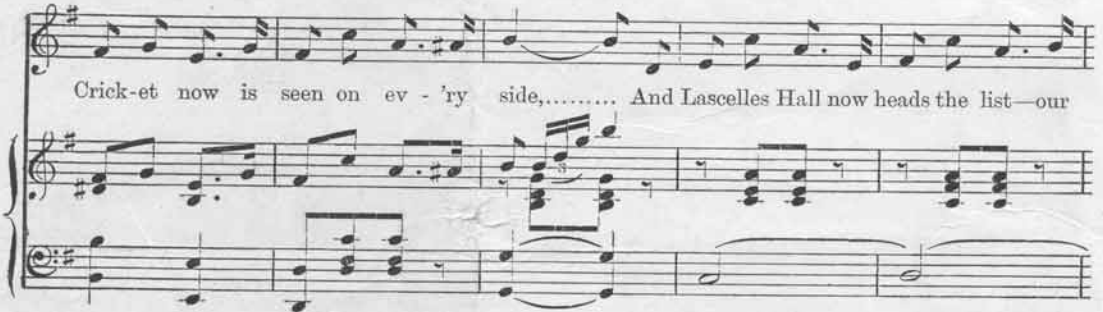
BY E. A. LODGE

VOICE.



1. The good old game of

PIANO.



CHORUS.

(Then) Here's to Las-celles Hall, good old Las-celles Hall! For we have the cup to-day,

And we won it by the way We can use the Bat and Ball at Las-celles Hall, boys!

The first round of the Cup Ties, boys, put **Hartshead** in the shade,
 And left our team victorious, though well the "Archit's" played;
 And then the show our batters made, upon the **Staincliffe** ground,
 Opposed to **Staincliffe** bowling, boys, won us applause all round.

Chorus—Then here's to Lascelles Hall, &c.

And then our semi-final comes with **Batley** on the field,
 But like their predecessors, boys, they also have to yield;
 And now the final match we play, but **Ossett's** little score
 We safely pass, and win the Cup—victorious once more.

Chorus—Then here's to Lascelles Hall, &c.

Then here's to Ephraim Lockwood, boys, the veteran of the day,
 His brother David, Brothers Bates, "Young Jack," and Walter Kaye,
 With Milnes, Herbert Thewlis, too, and "Aiti" hard to beat,
 And Crosland, Pollard, Broadhead, now, I think, the lot's complete.

Chorus—Then here's to Lascelles Hall, &c.

Another verse, and then I close, but one, I think, is due,
 To all our good supporters who have seen us safely through;
 And may the name of Lascelles Hall, once more set hearts aglow,
 As in the famous days we had some twenty years ago.

Chorus—Then here's to Lascelles Hall, &c.

SPEN VALLEY SUPERSTARS

1905 – NEW LEAGUE



Staincliffe were founder members of the Spen Valley & District League, which came into being in 1905.

One of the best performances that year came in the first year of the competition, against Liversedge in early July.

SPEN VALLEY AND DISTRICT LEAGUE.
HECKMONDWIKE v. SPEN VICTORIA—At
Heckmondwike.

| | |
|------------------------------|-----|
| Heckmondwike. | |
| Lister, b Carbutt | 41 |
| Yeaton, b Mortimer | 0 |
| Firth, b Mortimer | 9 |
| Ackroyd, c Peel, b Mortimer | 0 |
| Wharton, b Mortimer | 0 |
| Stead, c Sutton, b Mortimer | 42 |
| Howard, b Cooper | 0 |
| Britton, c Peel, b Sutton | 22 |
| Parker, b Sutton | 5 |
| Kitchingman, b Sutton | 0 |
| Wilson, not out | 2 |
| Extras | 2 |
| Total | 129 |
| Spenn Victoria. | |
| Thorner, c Lister, b Wharton | 47 |
| Cooper, c Wilson, b Parker | 18 |
| Peel, not out | 42 |
| Carbutt, not out | 0 |
| Extras | 3 |
| Total for 2 wks | 130 |

LIVERSEDGE v. STAINCLIFFE—At Liver-
edge. Staincliffe declared their innings
closed.

| | |
|------------------------------------|-----|
| Staincliffe. | |
| C. Oddy, b Fisher | 93 |
| W. Dennis, at Hemmingway, b Black- | 55 |
| burn | 57 |
| J. S. Anty, not out | 0 |
| W. Carr, c Carr, b Blackburn | 0 |
| H. Ouldry, c Hemmingway, b Black- | 0 |
| burn | 0 |
| W. Anty, b Blackburn | 1 |
| J. Parker, c Fisher, b Blackburn | 12 |
| G. H. Pickering, b Bonthroyd | 26 |
| G. Norton, run out | 0 |
| R. Stone, not out | 4 |
| Extras | 14 |
| Total for 8 wks | 262 |
| Liversedge. | |
| H. Spencer, c Oddy, b Dennis | 53 |
| F. Hemmingway, not out | 18 |
| W. Carr, b Dennis | 74 |
| G. Hemmingway, c Blamires, b W. | 5 |
| Anty | 13 |
| H. Walker, not out | 5 |
| Extras | 5 |
| Total for 3 wks | 113 |

BIRKENSHAW v. HANGING HEATON.

| | |
|----------------------------------|-----|
| Hanging Heaton. | |
| J. Lodge, b C. Davy | 40 |
| H. Spencer, b C. Davy | 8 |
| J. W. Ingham, b C. Davy | 3 |
| H. Exiden, c Haigh, b A. Davy | 41 |
| F. Lodge, c Holt, b Welburn | 14 |
| G. Rendor, b C. Davy | 1 |
| E. Hanson, b C. Davy | 4 |
| J. A. Carr, b C. Davy | 18 |
| E. A. Wilman, c Haigh, b C. Davy | 1 |
| K. Pollard, not out | 29 |
| J. Ineson, not out | 9 |
| Extras | 13 |
| Total for 9 wks. (declared) | 185 |
| Birkenshaw. | |
| E. Jowett, c Wilman, b F. Lodge | 39 |
| G. Welburn, b F. Lodge | 0 |
| C. W. Haigh, not out | 12 |
| C. Scott, not out | 14 |
| Extras | 5 |
| Total for 2 wks | 59 |

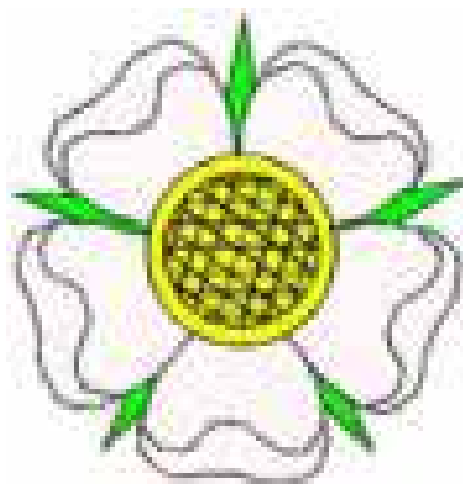
DEW
 BURY
 St. P
 B. Mil
 J. H. V
 E. Aut
 sep 2
 Dews
 8. W
 W. K
 (i) Ba
 extras
 THO
 —AC J
 Inde
 Brown
 Dougl
 worl
 ley O
 Brow
 A. J. O
 b D
 total
 Ten
 C. Re
 10. J
 b Th
 stand
 G. W
 O. B.
 M
 GIB
 Pa
 wor
 Han
 Bou
 13.
 Wal
 not
 out
 C
 ar.
 A.
 Gib
 0.
 Ho
 St
 pl
 J
 Ba
 b
 er
 98
 pl
 M
 b
 to
 K
 8
 5
 I
 I
 I
 S

COUNTY - WIDE COMPETITION

1916 - YORKSHIRE COUNCIL

Staincliffe Cricket Club looked to be on the up when, in 1916, they joined the prestigious Yorkshire Council competition.

It was in this league that they would now face such heavyweights as Batley, Heckmondwike, and other local rivals.



Staincliffe performed well in their first season and were sitting on top of Section 'E' after 12 matches had been completed.

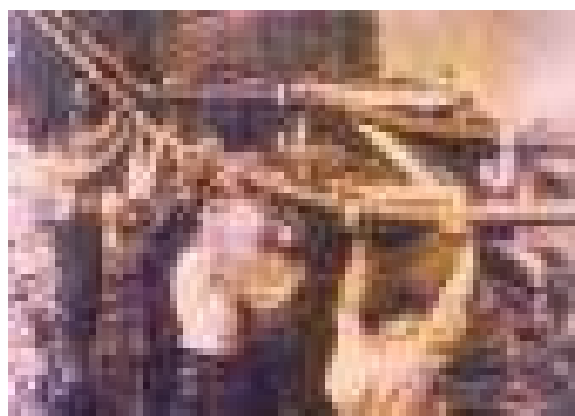
A Section play-off against Cleckheaton was eventually secured under the captaincy of Sam Butterfield.

SLEEPING ROOM ONLY!

1921 – NEW CLUBHOUSE



In 1921 a clubhouse was donated to the Club by Mr R. Fox of Staincliffe Hall.



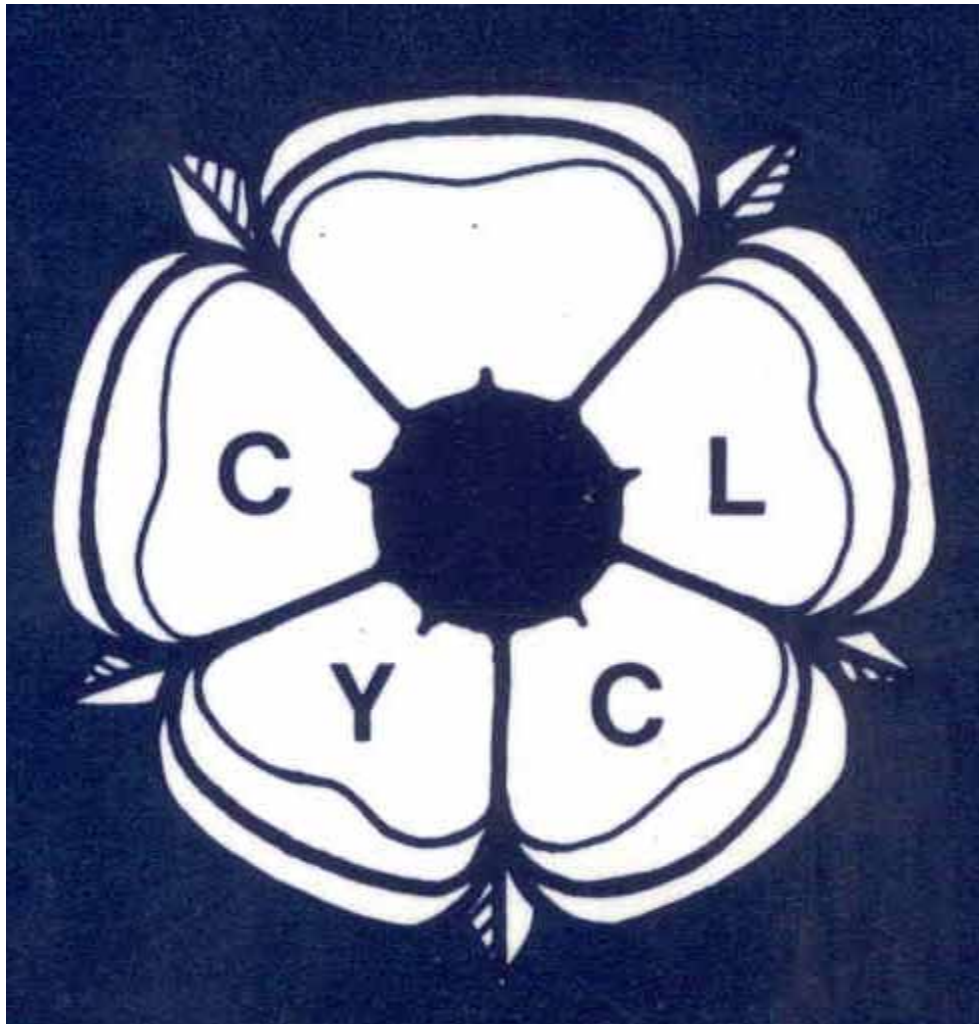
It had previously been used by some local Irish workmen - who were employed in the nearby cotton mill - as sleeping quarters.



The clubhouse today

INTO THE BIG LEAGUE

1938 – CENTRAL YORKSHIRE LEAGUE



The first season of the new Central Yorkshire Cricket League in 1938 was not a happy one for Staincliffe.

In fact, they failed to win even a single game!



YORKSHIRE CENTRAL CRICKET LEAGUE. (YORKSHIRE COUNCIL.)

Results up to and including August 2011.

| | P | W | L | D | PTS |
|---------------------|----|----|----|----|-----|
| Osbelt | 16 | 10 | 2 | 4 | 34 |
| Dewsbury and Savile | 13 | 9 | 2 | 6 | 33 |
| Cleckheaton | 18 | 9 | 4 | 5 | 32 |
| Heckmondwike | 18 | 7 | 3 | 8 | 29 |
| Wakefield | 19 | 6 | 6 | 4 | 22 |
| Birstall | 18 | 6 | 9 | 1 | 21 |
| Bailey | 18 | 3 | 5 | 10 | 19 |
| Morley | 16 | 4 | 7 | 5 | 17 |
| Liversedge | 18 | 4 | 10 | 4 | 16 |
| Staincliffe | 17 | 0 | 10 | 7 | 7 |

SECOND ELEVENS

| | | | | | |
|---------------------|----|----|----|---|----|
| Heckmondwike | 18 | 10 | 2 | 6 | 36 |
| Osbelt | 16 | 10 | 4 | 2 | 32 |
| Wakefield | 16 | 9 | 3 | 4 | 31 |
| Bailey | 18 | 8 | 7 | 3 | 27 |
| Birstall | 17 | 6 | 8 | 3 | 21 |
| Cleckheaton | 17 | 6 | 6 | 6 | 21 |
| Liversedge | 18 | 6 | 10 | 2 | 20 |
| Dewsbury and Savile | 17 | 6 | 8 | 4 | 19 |
| Morley | 16 | 4 | 8 | 4 | 18 |
| Staincliffe | 17 | 3 | 10 | 4 | 13 |

JOHN SMITH, Hon. Secretary