

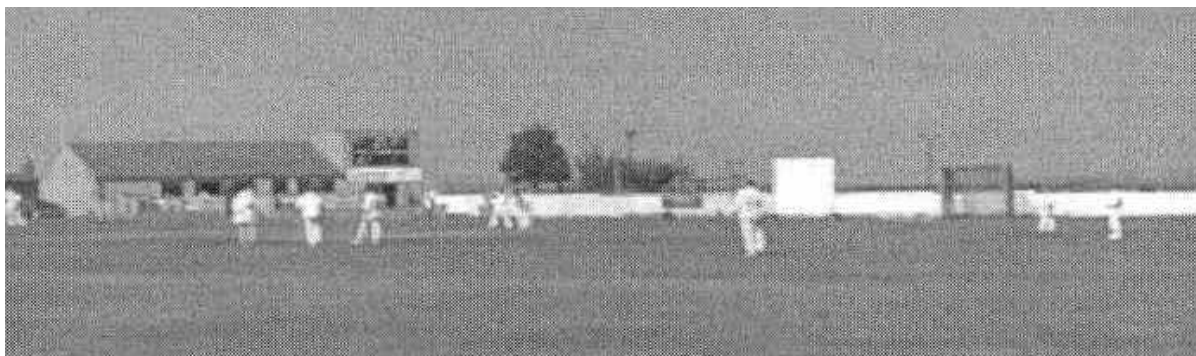
BATLEY CC

Welcome to Mount Pleasant



This aerial view of Batley is dominated by Mount Pleasant - the cricket ground to the left, the rugby league ground to the right, and the bowling green above the cricket field.

At the bottom of the photo there is Hyrstmount School, and in the top-right corner the mills and factories of Batley itself.



The pavilion at Mount Pleasant today incorporates changing rooms, tea room area, scorebox and garage. Adorning the outside walls are adverts for a variety of local companies and sponsors, including Kozee Sleep.

There is also a seating area in front of the building where batters waiting to go out to the middle can bite their nails in peace and quiet.



The grass banking on the pavilion side of the ground is a popular spot for local cricket-watchers. And these guys also seem pretty receptive to the green card flyers being handed out to publicise the HLF Cricket Heritage Project!



'Playing cricket in the local community' is how the Batley CC website describes the main function of the Club. It goes on: ***'Everyone at Batley CC wants to be part of a competitive and successful club that is also welcoming and inclusive to all'***.

The cricket ground is only a six-hit away from Batley Bulldogs Rugby League Football Club. The floodlights are easy to spot...



...as is the regionalist graffiti!



The connection has always been a close one. The two grounds lie adjacent to each other, high up above Batley in the Mount Pleasant area, and for most of the last century cricketers and rugby league players (the 'Gallant Youths') changed in the same dressing-room area - in the dressing rooms that now form part of the cricket pavilion.

Only occasionally would the cricket team and rugby team need to use the facilities on the same day - maybe in April/May or August/September - and this logistical problem was usually sorted out satisfactorily. And the problem was solved completely when the rugby club built its own dressing rooms.

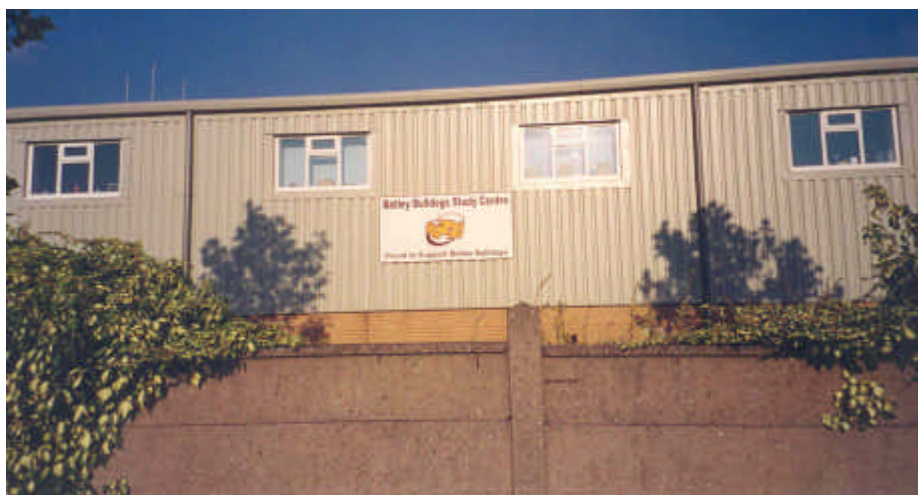


The Batley Taverners club is also a link between the two sports teams. In fact, the Cricket Club used to use the Taverners as its clubhouse, and there are still cricket-related photos on its walls.

The fortunes of the two sides has ebbed and flowed dramatically. In the last decade there have been profound changes: the cricket club is now predominantly Asian, while the rugby league team have re-invented themselves as the 'Batley Bulldogs' in line with the dictates of summer rugby and the dominant 'Super League' culture.



Hence the establishment of the 'Batley Bulldogs Study Centre', a revolutionary development that aims to ingratiate the rugby league club with local youngsters.



Around the ground there are some interesting buildings. A former scorebox...



...some netting facilities...



...and lots of signage.

