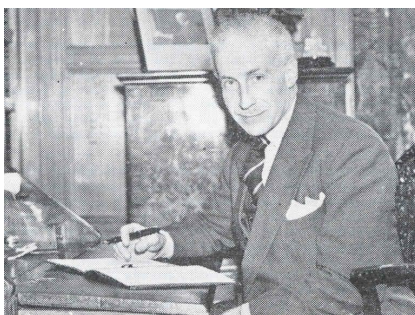


# MOOR MEN

SIR ALFRED L. MOWAT



Sir Alfred Mowat was President of Hartshead Moor C.C. for 47 years between 1921 and 1968, when he died. He opened the Club's new pavilion in 1928, and received a silver statuette of a cricketer as a special gift.

He also presided when the new scoreboard – or 'scoring pavilion' – was brought into use in 1938. Sir Alfred was much respected on account of his career in public service.

# LEN SQUIRE



**When Len Squire played in the 1958 Heavy Woollen Cup final, aged 32, he was already described in the preview as a 'Hartshead Moor stalwart'.**

**By 1981, 23 years later, that description had become even more fitting as he was still turning out regularly for the 2<sup>nd</sup> XI, and even made an appearance in the 1<sup>st</sup> XI at the age of 57. Len is now a life member of the Club.**

**Len has been an invaluable ally as we have researched and prepared this Exhibition, lending us personal scrapbooks and photographs. Thanks Len!**

# PETER SQUIRE



Peter is the son of Len and another Hartshead Moor stalwart. He is a former 1<sup>st</sup> XI skipper and, like Len, has been an invaluable contact as we have researched and prepared this Exhibition.

Thanks Peter!

# BYROM CLEGG & ARTHUR BARRITT



**In 1927 Byrom Clegg and Arthur Barritt were given the honour of becoming the Club's first life members.**



# HARRY WILKINSON & MR W. ELLISON.



When the Club's Jubilee brochure was produced in 1926, it paid tribute to Harry Wilkinson, J.W.

Booth and Mr W. Ellison. At that time Harry Wilkinson had been Club treasurer for 'more years than he cares to remember', while Mr W. Ellison had served the Club well as secretary.

# J.W. BOOTH



**In 1926 J.W. Booth had recently retired as secretary. He had occupied the position for 21 years and, in all, worked tirelessly for the Club for over 50 years. Both his brothers, Clifford and Willie, played for the Club and the family link was continued through Harry, his son, who played too, and also compiled the 1951 history brochure.**

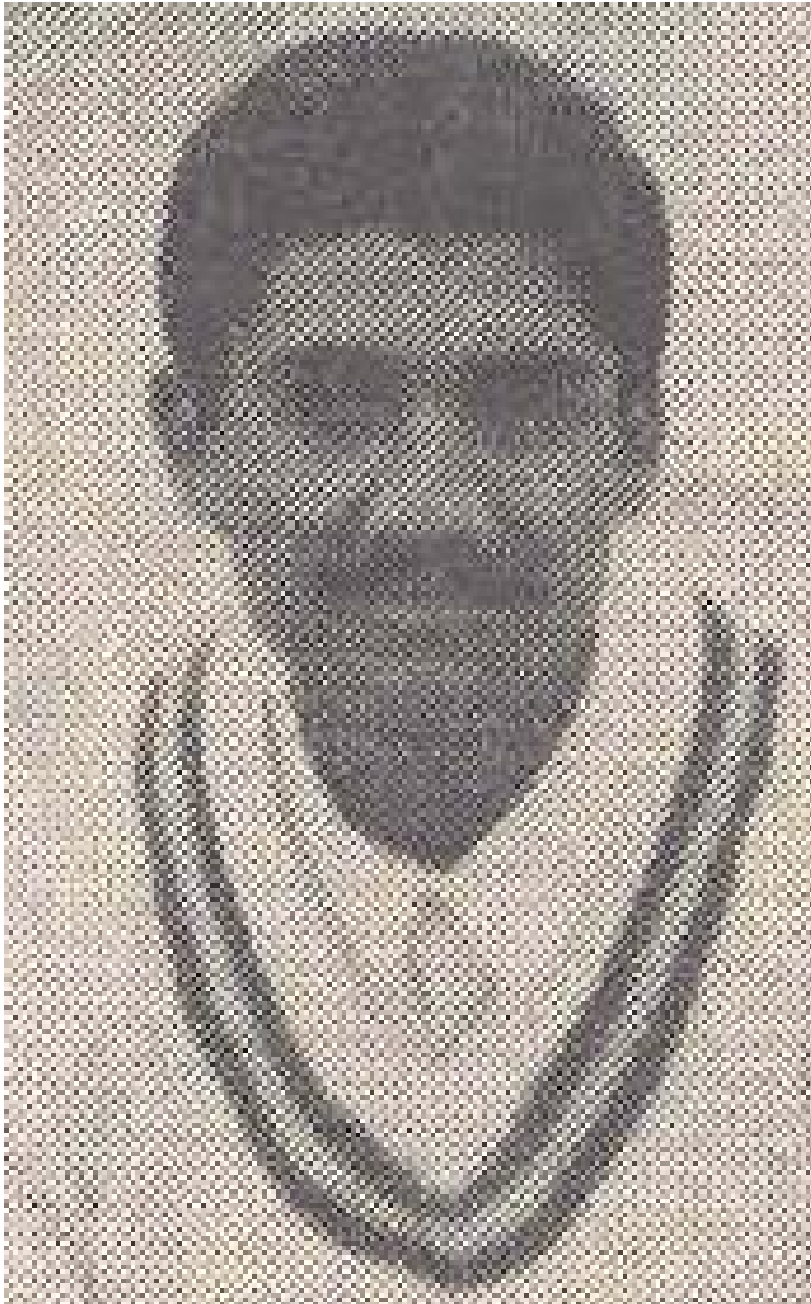


# GEORGE W. SYRETT



Although he never played cricket, George W. Syrett made a considerable contribution to Hartshead Moor C.C.. After joining the Club committee in 1925, he had become treasurer by 1929 and, after giving up that position in 1938, fulfilled the role of secretary for the next 25 years.

# SHAHID MAHBOOB



Shahid Mahboob enjoyed a successful season at Hartshead Moor in 1982. The Pakistan international, who played in 1 Test Match and 10 One Day Internationals, bagged 89 wickets in the season at an average of 12.85.

# REGGIE WALKER



All-rounder Reggie Walker was a member of the 1958 Heavy Woollen Cup-winning side. He also played in two other Heavy Woollen Cup finals for the Club and worked tirelessly on the ground.

# TERRY EVANS



**Batsman Terry Evans joined the Club in 1963 and by 1967 he had become 1<sup>st</sup> XI captain. He went on to lead the side to the Bradford League 2<sup>nd</sup> Division title in 1972 and 1974. His two sons Martyn and Richard also played 1<sup>st</sup> XI cricket at Hartshead Moor.**

# DONALD HIRST



**Donald Hirst was one of Hartshead Moor's most prolific batsmen. As well as scoring over 7,000 runs for the Club, he also captained the 1<sup>st</sup> XI to arguably its greatest triumph, the 1958 Heavy Woollen Cup. Both Donald's father, Joe, and his brother, Ray, also played for the Club.**

# JOHN EYRE



Derbyshire county cricketer John Eyre was signed as Club professional in 1965.

# BRIAN REDFEARN



Bradford City and Barrow footballer Brian Redfearn was signed as a professional in 1966 and remained with the Club into the 1970s.