

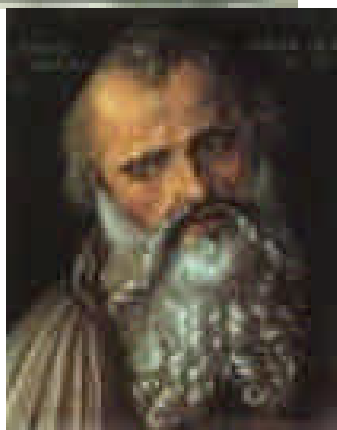
## BIRCHENCLIFFE CC

The Early Years

# BROAD CHURCH

1920s & 1930s – THE FIRST BIRCHENCLIFFE CLUB

There was a cricket club in Birchencliffe in the inter-war years: Birchencliffe Church Cricket Club, linked to the local parish church, St. Philip the Apostle.



**The church**

**St. Philip**

Their HQ was in the middle of the village, and there was a set of tennis courts next door.



Birchcliffe Church Cricket Club competed in the Huddersfield Association League. The Club also played a lot of evening cricket.

As their players all worked in the local mills, they rarely got Saturdays off.

# TO THE POWER OF TWO

1934 – DOUBLE SUCCESS

In 1934 the Club's 2nd XI won a league and cup double, securing the Huddersfield Association Challenge Shield and the Armitage Shield.



Blackley ... ..	158	D.B.S. .... ..	149
Cowcliffe Ch. (for 2) ...	100	Rastrick N.R. ... ..	98
Elland Wesley ... ..	68	Outlane (for 7) ...	71
L. B. Holliday's ... ..	80	B.D.C. ... ..	106
Rowley Hill (for 6) ...	47	Almondbury Wes. ...	39
		Birchcliffe Church	
Britannia Works ... ..	30	(for 3) ... ..	33
SECOND COMPETITION			
Almondbury Wes. (for 5) ... ..	155	Rowley Hill ... ..	154
Birchcliffe Ch. ... ..	32	Britannia Works ...	77
B.D.C. ... ..	37	L. B. Holliday's ...	57
D.B.S. ... ..	108	Blackley (for 8) ...	75
		Cowcliffe Church	
Rastrick N.R. ... ..	43	(for none) ... ..	51
Outlane (for 3) ... ..	60	Elland Wes. ... ..	58
PERFORMANCES			
BATTING			
S. Shaw, D.B.S. (v. Blackley) ... ..			51
L. Liversedge, D.B.S. (v. Blackley) ... ..			53
BOWLING			
J. Whittaker, Rowley Hill (v. Almondbury Wesleyans) ... ..			8 for 12
W. A. Green, B.D.C. (v. L. B. Holliday's) ... ..			6 for 27
F. Haigh, Birchcliffe Ch. (v. Britannia Works) ... ..			5 for 8
D. Shaw, Outlane (v. Elland Wesley) ... ..			5 for 15
R. Iredale, Blackley (v. D.B.S.) ... ..			5 for 39

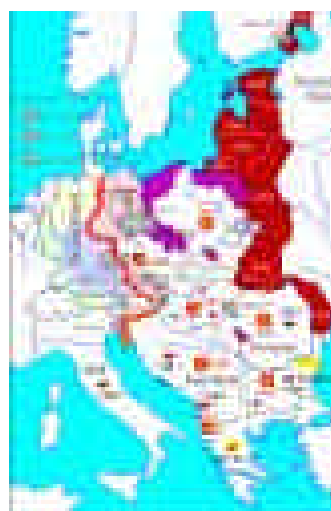
ASSOCIATION					
FINAL LEAGUE TABLES.					
First Eleven.					
	P.	W.	L.	D.	Pts.
H.D.C. Ltd. .... ..	18	12	4	2	26
Outlane ... ..	18	12	5	1	25
Rastrick New Road ... ..	18	11	5	2	24
Elland Wes. .... ..	18	9	7	2	20
Blackley ... ..	18	8	7	3	19
Almondbury Wes. ....	18	9	8	1	19
Cowcliffe Church ... ..	18	7	8	3	19
Rowley Hill ... ..	18	7	10	1	15
L. B. Holliday's S.C. ...	18	5	11	2	13
Birchcliffe Church ... ..	18	3	13	2	8
Britannia Works S.C. ...	18	2	14	2	6
D.B.S. Ath. .... ..	18	0	18	0	0
Second Eleven.					
	P.	W.	L.	D.	Pts.
Birchcliffe Church ... ..	18	12	4	2	26
Outlane ... ..	18	11	5	2	24
Cowcliffe Church ... ..	18	10	5	3	21
Blackley ... ..	18	8	7	3	19
Britannia Works ... ..	18	9	8	1	19
Rowley Hill ... ..	18	8	8	2	18
R.D.C. Ltd. .... ..	18	7	10	1	15
Almondbury Wes. ....	18	6	10	2	14
L. B. Holliday's S.C. ...	18	4	11	3	11
D.B.S. Ath. Club ... ..	18	4	13	1	9
Elland Wes. .... ..	18	3	13	2	8
Rastrick New Road ... ..	18	2	14	2	6



# WAR STOPS PLAY

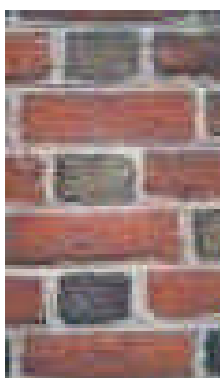
1939 – CLUB FOLDS

The 'old' Birchencliffe C.C. 1939 folded almost as soon as hostilities broke out in 1939 – and its members dispersed.



The Club sold its pavilion to Blakeboroughs Cricket Club.

The field that it had rented as a ground was sold to Birchencliffe Brick Works to be used for quarrying.



# SECOND TIME AROUND

1950 – BIRTH OF NEW CLUB



Customers of the former Royal Hotel established the 'new' Birchencliffe Cricket Club. Some local men had returned from the War without a cricket team to play for.

The 'new' Birchencliffe club was formed officially on 20 November 1950 at a special meeting staged at the Hotel.

# WANDERING NOMADS!

1950s – GROUNDLESS

They moved into their Halifax Road HQ a few years later. In the years in between they wandered from ground to ground like nomads.



Club stalwart Peter Clarkson explains: ***'It was a fresh start for everyone after the war. We had no proper base - we'd literally play anywhere.'***

# THE FUTURE ARRIVES!

## 1952 – HUDDERSFIELD ASSOCIATION

Birchcliffe were admitted to the Huddersfield Cricket Association in 1952 – and stayed there for a quarter of a century. They were members of the League when it celebrated its 75<sup>th</sup> Anniversary in 1961.



# LUCKY 13!

UNDATED TEAM PHOTO



**Can you name the year? Or any faces?**  
**Note the presence of the two Club umpires in the**  
**'team picture'**

# THAT WINNING FEELING!

1955 – CROSLAND TROPHY WINNERS



The winning team – but can you name the two  
gents in the jackets?

# TWICE AS NICE!

1957 - LUMB CUP & ASSOCIATION LEAGUE SUCCESS





**Rivals Outlane in the 1950s**



**Can anyone confirm whether this is the victorious side? Phone us on 473032**

# 13 + 2 = 15 FINE MEN!

1958 – ASSOCIATION SECTION 'C' CHAMPIONS

