

CARTWORTH MOOR CC

# STAR MEN

## Freddie Jakeman



**Freddie Jakeman learnt his cricket at Gill Lane before moving on to play for Yorkshire and Northamptonshire.**

**He then went on to become a first-class umpire, and returned to Cartworth Moor for his swansong in middle age.**

# Stuart Clayton



Stuart Clayton in 1959

**Stuart Clayton joined Cartworth Moor in 1956. In 1987 he skippered the side that started in Section C and including ex-Holmfirth players Alan Hollingworth and David Battye and Doug Shaw, who had started out at the Moor before joining Meltham.**



Stuart Clayton in 1989

**Sprightly 60-year-old Doug Thorpe had moved up the hill from Holmbridge, with Peter Beever the only player actually born in Cartworth Moor.**

# **The Holland Brothers**

**On occasions James and Wilf Holland opened the bowling together for Cartworth Moor. Newspaper headlines would roar out:**

**HOLLAND BROTHERS DO IT AGAIN!**



Jim Holland

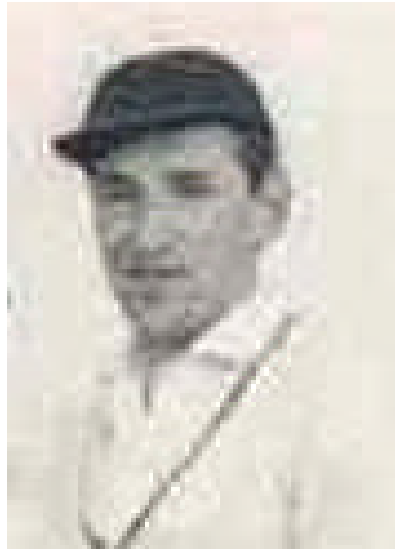
**James was a real tryer, who never gave in. He was a hard man who worked in the local quarry industry – and wouldn't think twice about bowling 20 overs on the trot, and uphill into the wind.**

**Wilf played for Cartworth Moor for 26 years (1944-70) and then umpired for the Club for another 26 summers (1970-96).**

**He was a medium-pace bowler and an integral part of the post-war Cartworth Moor line-up.**

## **Geoff Boyes**

**Geoff Boyes was a fast-medium bowler who would also help out as groundsman.**



# **Douglas Booth**

**Douglas Booth an opening batsman, not a dasher or a hitter  
but a good, solid, proper opener.**

# **Sam Pickering**

**Sam Pickering was a razor-sharp fielder.**



# **Hubert Battye**

**Hubert Battye was a medium-paced trundler. He was steady away – and could bowl for hour upon hour.**

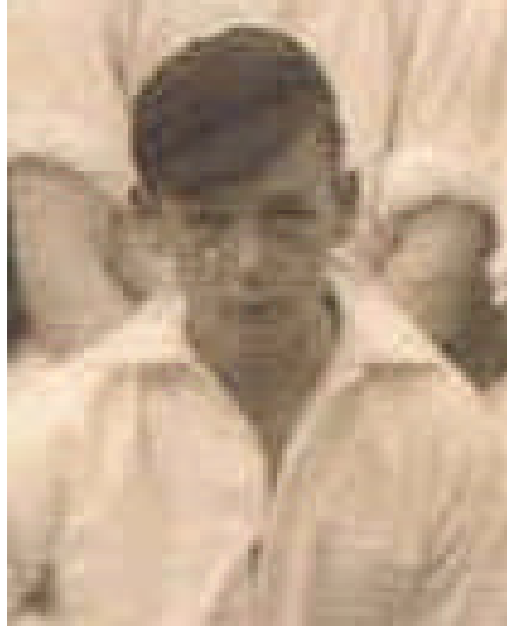


# **George Singleton**

**George Singleton was a batsman.**

# Omrie Sykes

Omrie Sykes was a proper opening batsman.



**In one cup game at Shelley, Sykes was approaching his century and his partner, Eric Beever, was closing in on a half-century.**

**Unfortunately, just as both players were about to reach their landmarks, the Shelley players appealed for bad light.**

**The game was held over to the Monday – and neither batsman managed to hold their nerve!**

# **Peter Beever**



**Both Peter Beever and his brother Gordon followed in the footsteps of their father at Cartworth Moor.**

**Eric had been a prominent batsman in the 1930s and his two sons have continued this tradition, with Peter winning the Willerton Trophy in 2002.**

# The Two Fred Battyes

The annals of Cartworth Moor cricket history contain two men by the name of Fred Battye – and they weren't related.

**Fred Battye #1** was an opening batsman and bowler.



Fred Battye the bowler

**Fred Battye #2** was a medium-fast left-arm seamer.

# Irving Swallow



**Irving Swallow was a bowler.**



# Harry Armitage

**Harry Armitage became president of Cartworth Moor Cricket Club. He used to live below the old Methodist chapel in Cartworth Moor.**

**He and his friends from the Cricket Club used to play bowls on his back lawn. On Sunday mornings they would also play bowls on the cricket square at Gill Lane!**

**A seat at the ground is dedicated to his memory.**

# **Dougie Thorpe**



**Dougie scored a century for Cartworth Moor after his 70<sup>th</sup> birthday – surely a unique feat in local league cricket?**