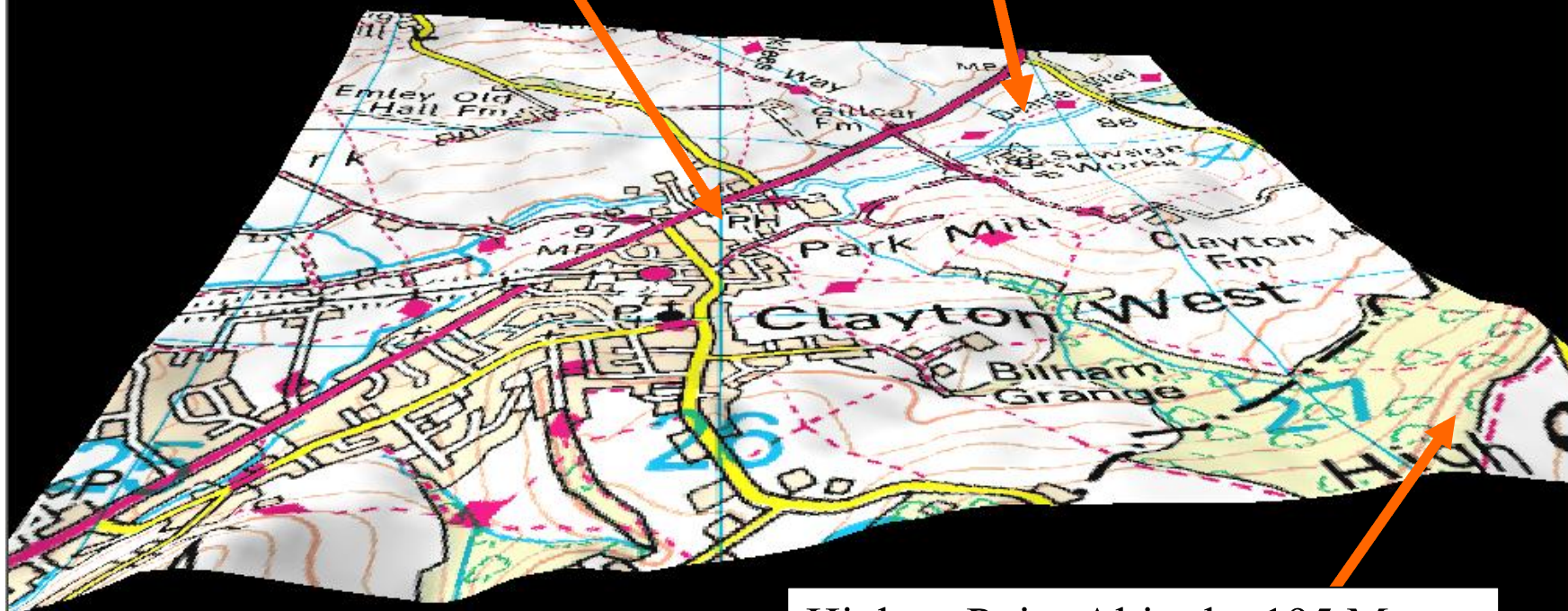


3D Map Showing Clayton West Cricket Ground and the Surrounding Area

Cricket Ground
Altitude: 98
Metres / 322 Feet
Above Sea Level.

Lowest Point
Altitude: 86
Metres / 282 Feet
Above Sea Level.



Highest Point Altitude: 195 Metres
/ 640 Feet Above Sea Level.

Aerial Photograph of the Area Shown on the 3D Map



Lowest Point.



Cricket Ground.



Highest Point
(Off Picture).

