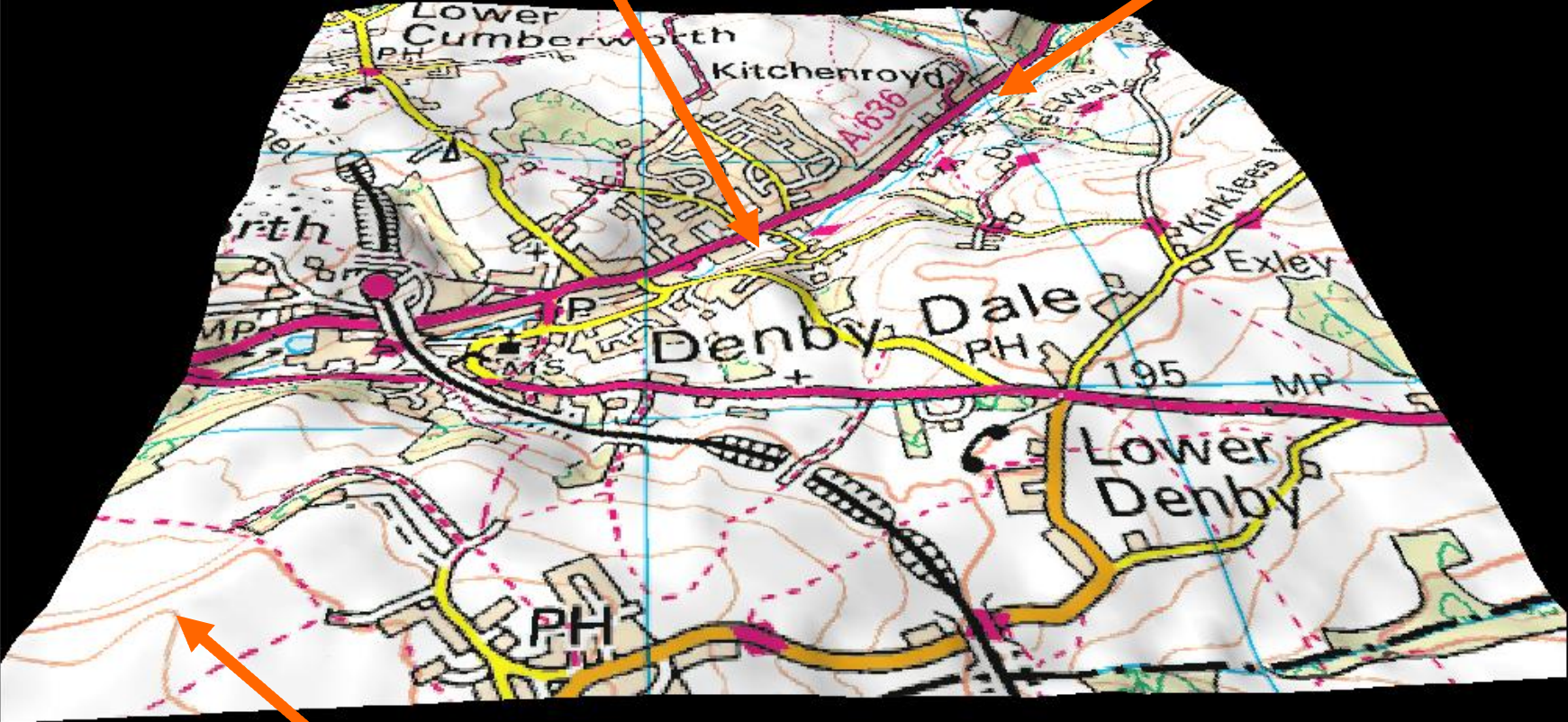


3D Map Showing Denby Dale Cricket Ground and the Surrounding Area

Cricket Ground
Altitude: 145
Metres / 476 Feet
Above Sea Level.

Lowest Point
Altitude: 130
Metres / 427 Feet
Above Sea Level.



Highest Point Altitude: 260 Metres
/ 853 Feet Above Sea Level.

Aerial Photograph of the Area Shown on the 3D Map



Lowest Point.



Cricket Ground.



Highest Point
(Just Off Picture).

