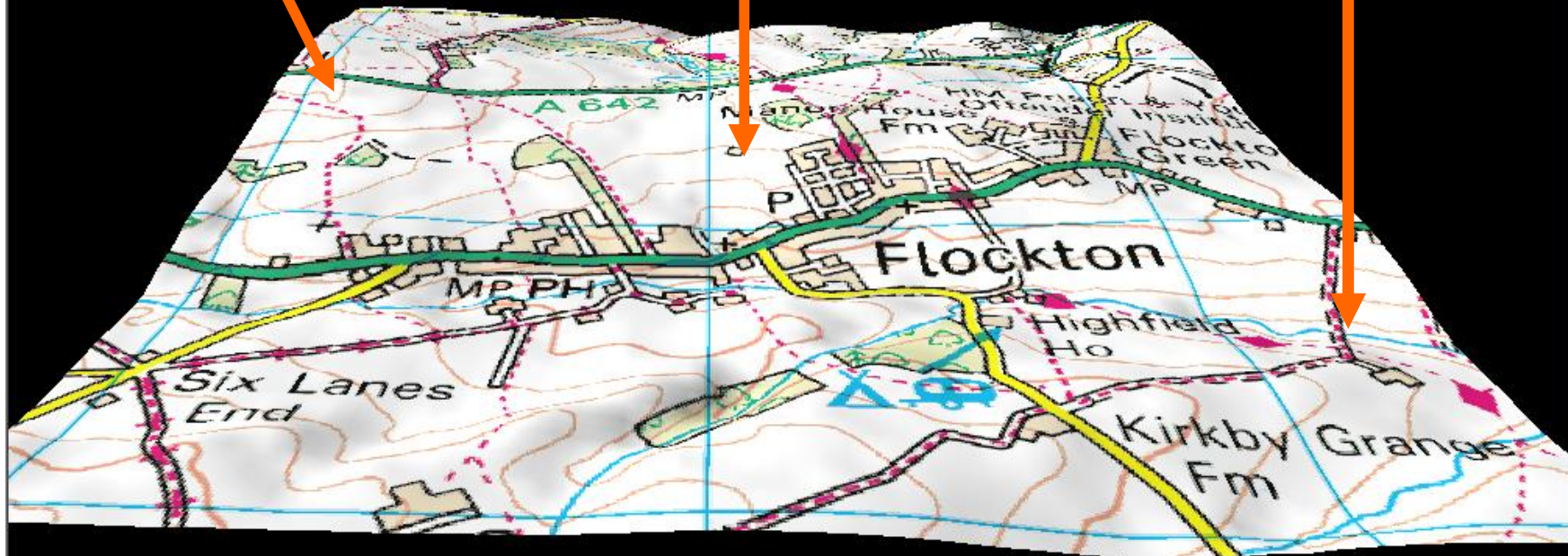


3D Map Showing Flockton Cricket Ground and the Surrounding Area

Highest Point
Altitude: 221
Metres / 725 Feet
Above Sea Level.

Cricket Ground
Altitude: 156
Metres / 512 Feet
Above Sea Level.

Lowest Point
Altitude: 119
Metres / 390 Feet
Above Sea Level.



Aerial Photograph of the Area Shown on the 3D Map

