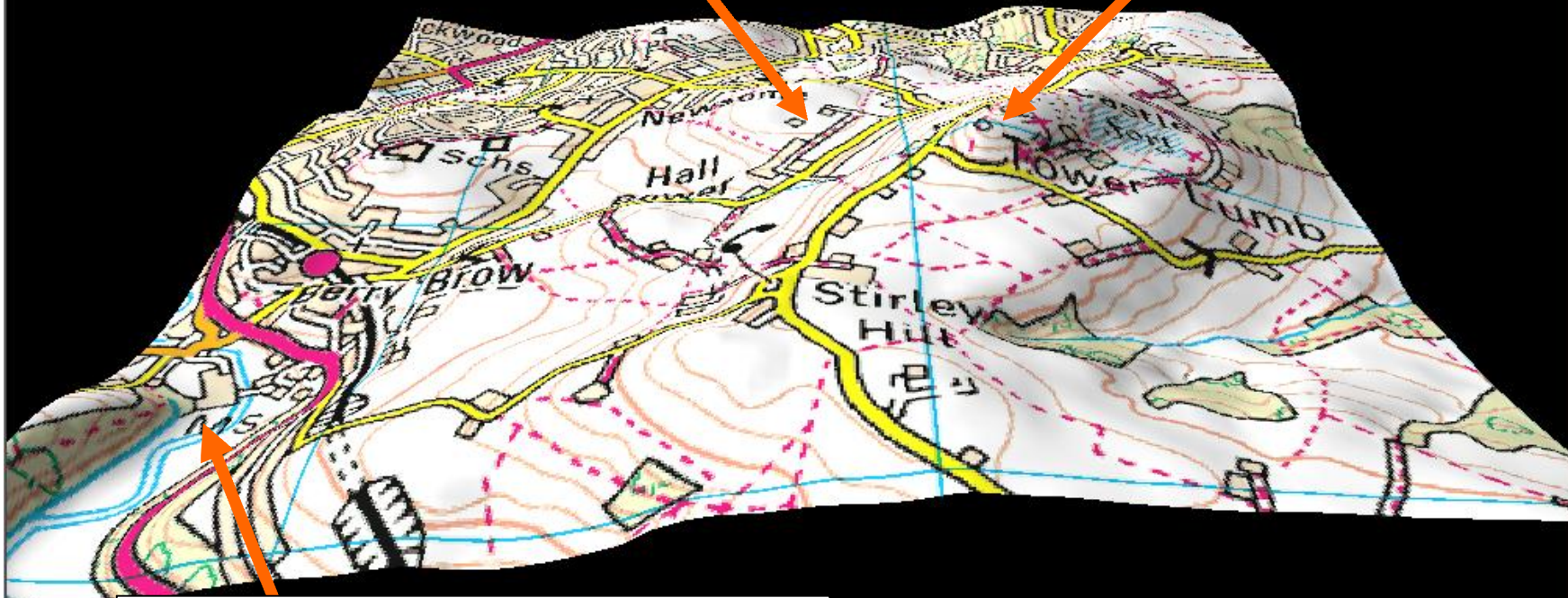


3D Map Showing Hall Bower Cricket Ground and the Surrounding Area

Cricket Ground
Altitude: 192
Metres / 630 Feet
Above Sea Level.

Highest Point
Altitude: 271
Metres / 889 Feet
Above Sea Level.



Lowest Point Altitude: 84 Metres /
276 Feet Above Sea Level.

Aerial Photograph of the Area Shown on the 3D Map

