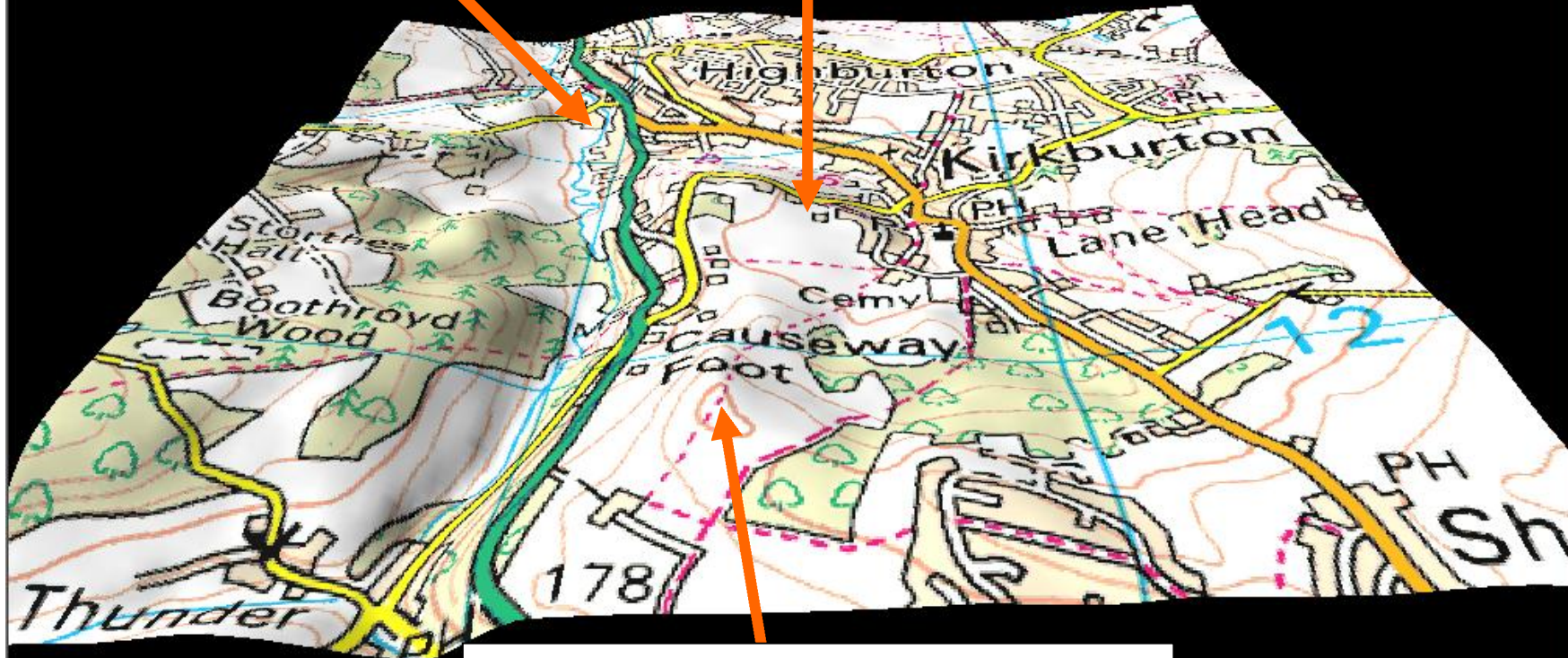


3D Map Showing Kirkburton Cricket Ground and the Surrounding Area

Lowest Point
Altitude: 95
Metres / 312 Feet
Above Sea Level.

Cricket Ground
Altitude: 136
Metres / 446 Feet
Above Sea Level.



Highest Point Altitude: 201 Metres
/ 659 Feet Above Sea Level.

Aerial Photograph of the Area Shown on the 3D Map

