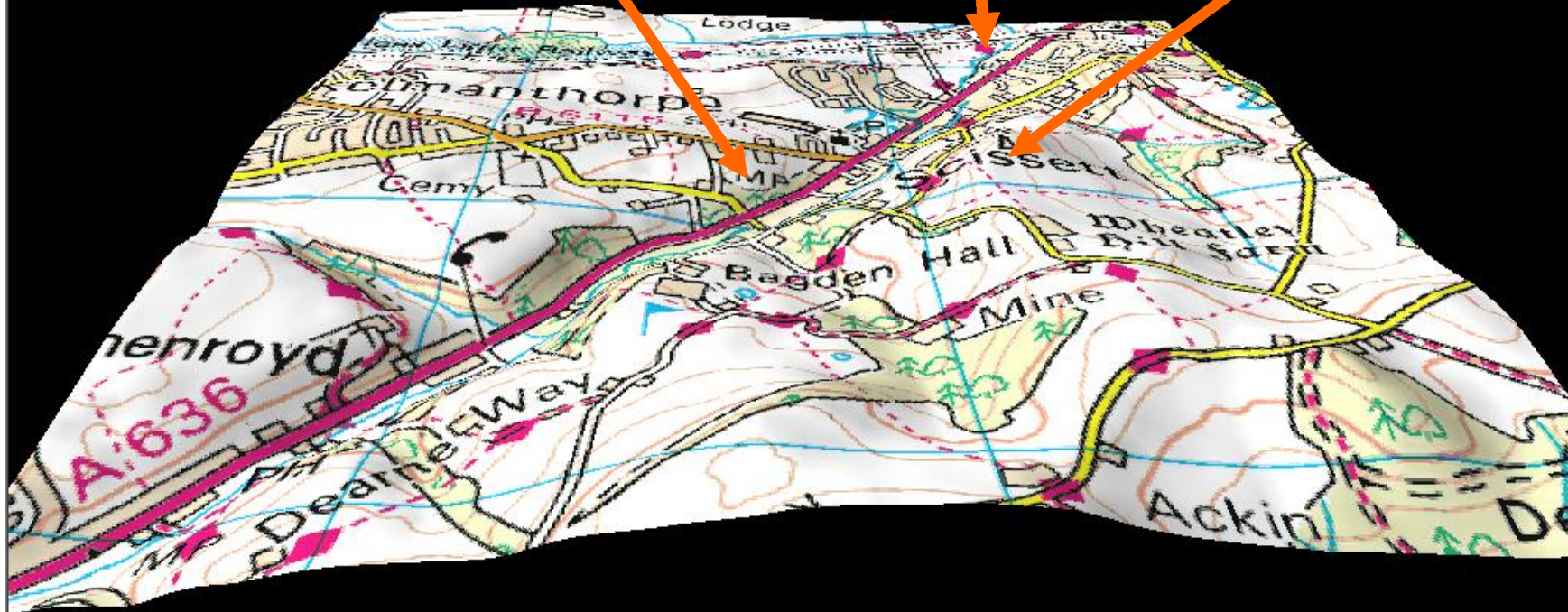


3D Map Showing Nortonthorpe Cricket Ground and the Surrounding Area

Cricket Ground
Altitude: 131
Metres / 430 Feet
Above Sea Level.

Lowest Point
Altitude: 102
Metres / 335 Feet
Above Sea Level.

Highest Point
Altitude: 172
Metres / 564 Feet
Above Sea Level.



Aerial Photograph of the Area Shown on the 3D Map

